



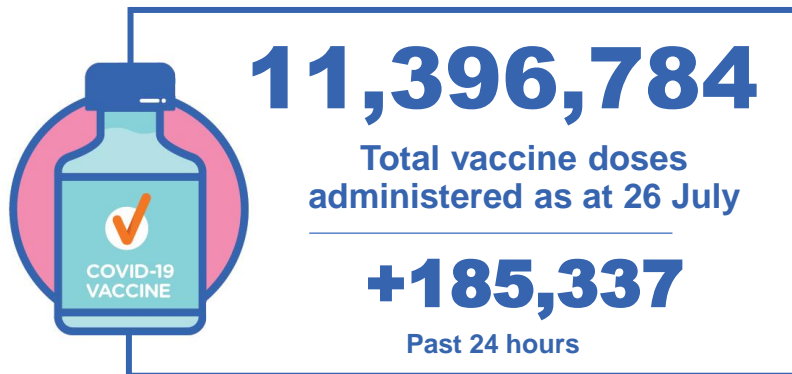
**Australian Government**  
**Operation COVID Shield**

# COVID-19 Vaccine Roll-out

27 July 2021

Data as at:  
26 Jul 2021

# Total vaccine doses



Commonwealth vaccine doses  
**6,414,568**  
(+107,525 last 24 hours)



Commonwealth vaccine doses in primary care  
**5,909,489**  
(+103,516 last 24 hours)



Commonwealth vaccine doses in aged and disability facilities  
**505,079**  
(+4,009 last 24 hours)



**4,982,216** (+77,812 past 24 hours)

Total vaccine doses administered in State and Territory clinics as at 26 July



\* Source: Australian Immunisation Register and self reported data. Numbers are calculated as differences in daily cumulative reported numbers to allow for historical corrections in all self-reported data sources.

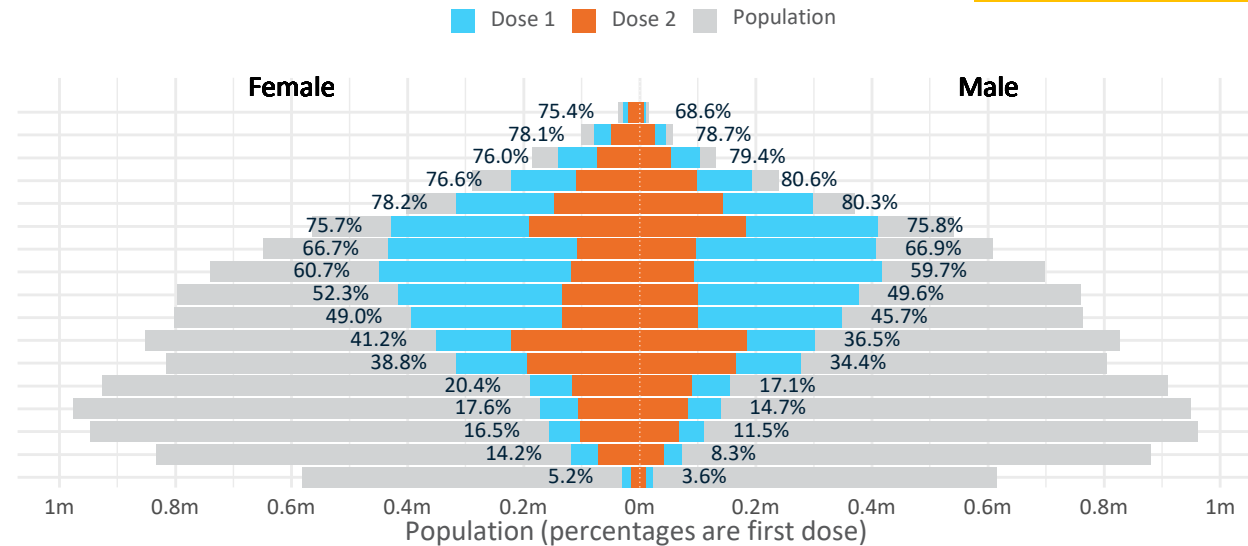
Data as at: 26 Jul 2021

# Doses by age and sex

First and second doses by age and sex, using ABS age brackets

	AUS	16+	50+	70+
Dose 1	<b>38.48%</b> (7,933,924 doses / 20,619,959 people)	<b>63.05%</b> (5,516,653 doses / 8,749,703 people)	<b>77.48%</b> (2,273,904 doses / 2,934,706 people)	
Dose 2	<b>16.70%</b> (3,444,461 doses / 20,619,959 people)	<b>22.63%</b> (1,979,809 doses / 8,749,703 people)	<b>37.43%</b> (1,098,356 doses / 2,934,706 people)	

Age	Dose 1	Dose 2
95+	38,896 (73.5%)	26,459 (50.0%)
90-94	124,174 (78.4%)	73,943 (46.7%)
85-89	244,884 (77.4%)	127,714 (40.4%)
80-84	414,639 (78.5%)	205,735 (38.9%)
75-79	613,219 (79.3%)	291,631 (37.7%)
70-74	838,092 (75.8%)	372,874 (33.7%)
65-69	841,235 (66.9%)	203,785 (16.2%)
60-64	865,790 (60.3%)	211,633 (14.7%)
55-59	793,357 (51.0%)	233,750 (15.0%)
50-54	742,367 (47.4%)	232,285 (14.8%)
45-49	652,672 (38.9%)	405,281 (24.2%)
40-44	593,946 (36.7%)	358,509 (22.1%)
35-39	345,257 (18.8%)	206,399 (11.2%)
30-34	312,001 (16.2%)	188,268 (9.8%)
25-29	268,994 (14.1%)	168,963 (8.9%)
20-24	192,067 (11.2%)	112,392 (6.6%)
16-19	52,334 (4.4%)	24,840 (2.1%)



DOH (Australian Immunisation Register), ABS (Population)

	AUS	ACT	NSW	NT	QLD	SA	TAS	VIC	WA
16 and over - dose 1	7,933,924	186,533	2,478,220	88,759	1,468,237	564,674	204,527	2,189,036	754,468
16 and over - dose 2	3,444,461	187,180	1,071,895	50,605	681,859	244,916	96,413	918,338	293,816
16 and over - population	20,619,959*	344,037	6,565,651	190,571	4,112,707	1,440,400	440,172	5,407,574	2,114,978
16 and over % with dose 1	38.48%	54.22%	37.75%	46.58%	35.70%	39.20%	46.47%	40.48%	35.67%
16 and over % with dose 2	16.70%	25.34%	16.33%	26.55%	16.58%	17.00%	21.90%	16.98%	13.89%
50 and over - dose 1	5,516,653	106,887	1,722,839	40,700	1,058,153	409,660	150,996	1,487,553	540,232
50 and over - dose 2	1,979,809	38,076	668,168	19,940	423,644	142,167	62,626	443,557	181,880
50 and over - population	8,749,703	127,802	2,807,793	62,280	1,758,855	674,384	220,036	2,211,211	885,370
50 and over % with dose 1	63.05%	83.63%	61.36%	65.35%	60.16%	60.75%	68.62%	67.27%	61.02%
50 and over % with dose 2	22.63%	29.79%	23.80%	32.02%	24.09%	21.08%	28.46%	20.06%	20.54%
70 and over - dose 1	2,273,904	38,041	734,495	9,431	451,164	182,679	63,542	581,493	213,169
70 and over - dose 2	1,098,356	20,233	364,017	6,446	230,929	81,388	34,358	260,849	100,255
70 and over - population	2,934,706	39,946	962,606	12,343	577,767	240,514	77,155	743,519	280,281
70 and over % with dose 1	77.48%	95.23%	76.30%	76.41%	78.09%	75.95%	82.36%	78.21%	76.06%
70 and over % with dose 2	37.43%	50.65%	37.82%	52.22%	39.97%	33.84%	44.53%	35.08%	35.77%

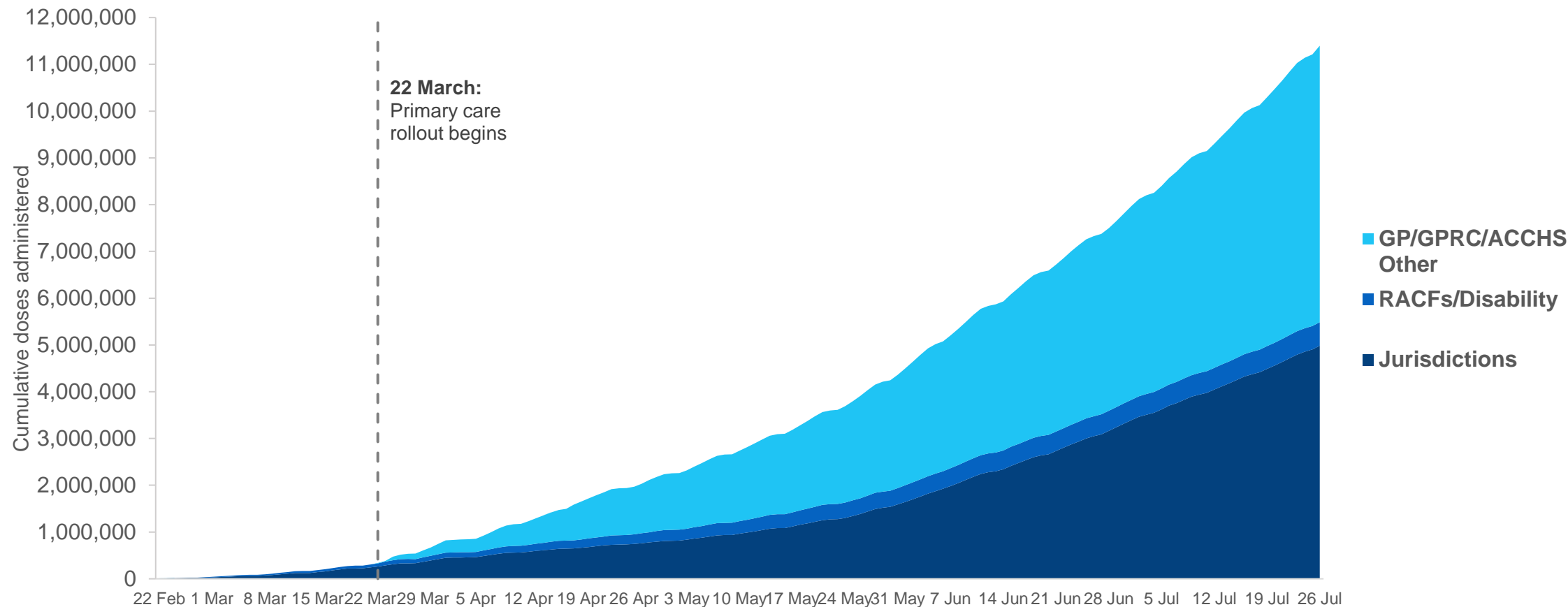
\*National population will not equal sum of listed jurisdictions due to a small number of people counted in national population residing in some 'other' territories

Doses sourced from Australian Immunisation Register, population from ABS ERP June 2020

# Cumulative doses administered by channel

Data as at:  
26 Jul 2021

Cumulative doses administered (26 July): **11,396,784**



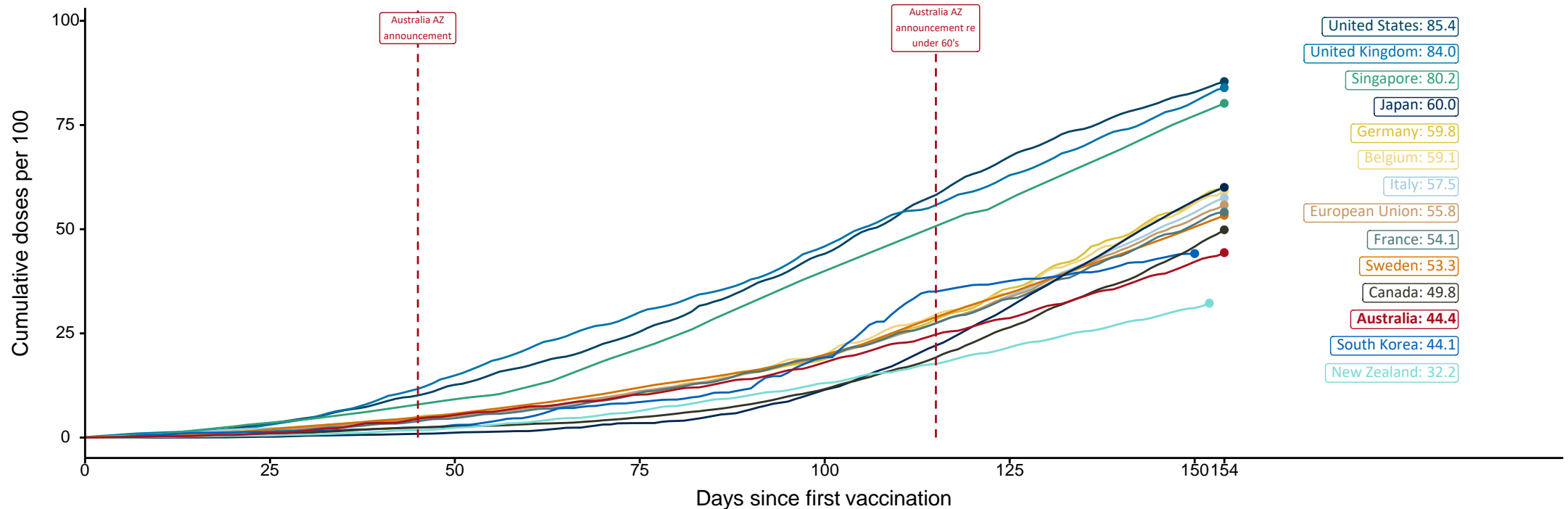
Source: Department of Health  
Data as at 26 July

# Doses at equivalent stages of rollout (Day 154)

Data as at:  
26 Jul 2021

Cumulative doses administered (26 Jul): **11,396,784**

The x-axis is truncated at the length of Australia's vaccination program. Countries with intermittent reporting have had their doses per 100 imputed to Australia's current stage of rollout. Israel excluded as it is beyond scale of the graph.



Source: Department of Health (Australia), Our World in Data (international)  
Latest data: 26 July

Data as at:  
26 Jul 2021

# Commonwealth aged care doses administered



Aged care and residential  
disability doses administered

**276,438**

First doses

**228,641**

Second doses

Residential aged care  
facilities

**2,572**

Sites visited for first doses

**2,586**

Sites visited for second doses



**505,079**

(+4,009 last 24 hours)

Total vaccine doses administered in aged  
care and disability facilities as at 26 July

Number of doses administered as part of the Commonwealth aged and disability care rollout

**NSW**  
**167,215**

(+1,459 last  
24 hours)

**VIC**  
**134,256**

(+692 last  
24 hours)

**QLD**  
**90,487**

(+553 last  
24 hours)

**WA**  
**44,411**

(+689 last  
24 hours)

**TAS**  
**17,351**

(+300 last  
24 hours)

**SA**  
**40,139**

(+288 last  
24 hours)

**ACT**  
**7,699**

(+0 last  
24 hours)

**NT**  
**3,521**

(+28 last  
24 hours)

Data as at:  
26 Jul 2021

# Commonwealth primary care doses administered



## Primary Care vaccine administration sites\*

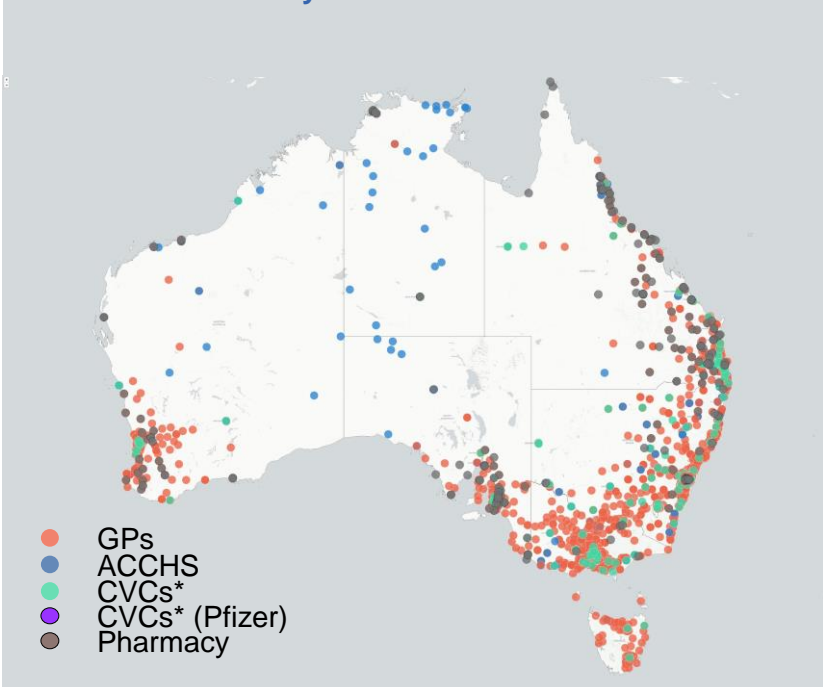
5,146	136	120	158	251
GPs	CVCs	CVCs (Pfizer)	ACCHS	Pharmacy



**5,909,489** (+103,516 last 24 hours)

Total vaccine doses administered in primary care settings as at 26 July

## Primary Care vaccine administration sites as at week of 26 July



## Number of doses administered as part of the Commonwealth primary care rollout

**NSW**  
**2,011,956**  
(+45,078 last 24 hours)

**VIC**  
**1,463,441**  
(+24,376 last 24 hours)

**QLD**  
**1,205,399**  
(+16,422 last 24 hours)

**WA**  
**538,157**  
(+8,339 last 24 hours)

**TAS**  
**132,274**  
(+1,307 last 24 hours)

**SA**  
**410,976**  
(+5,277 last 24 hours)

**ACT**  
**100,652**  
(+2,086 last 24 hours)

**NT**  
**46,634**  
(+631 last 24 hours)