



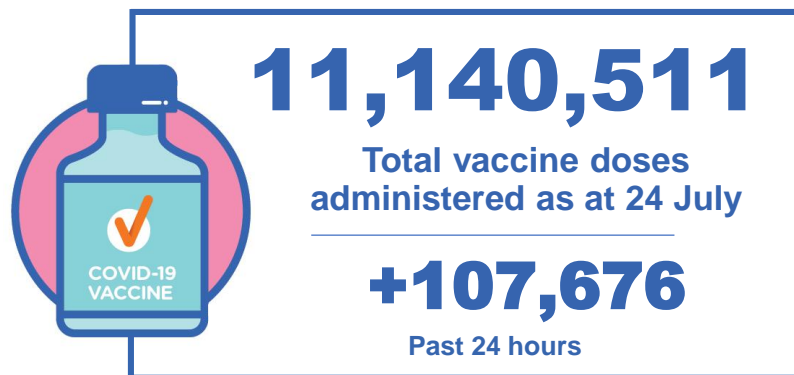
Australian Government
Operation COVID Shield

COVID-19 Vaccine Roll-out

25 July 2021

Data as at:
24 Jul 2021

Total vaccine doses



Commonwealth vaccine doses
6,285,694
(+47,298 last 24 hours)



Commonwealth vaccine doses
in primary care
5,785,218
(+46,358 last 24 hours)



Commonwealth vaccine doses in
aged and disability facilities
500,476
(+940 last 24 hours)



4,854,817 (+60,378 past 24 hours)

Total vaccine doses administered in
State and Territory clinics as at 24 July



Doses by age and sex

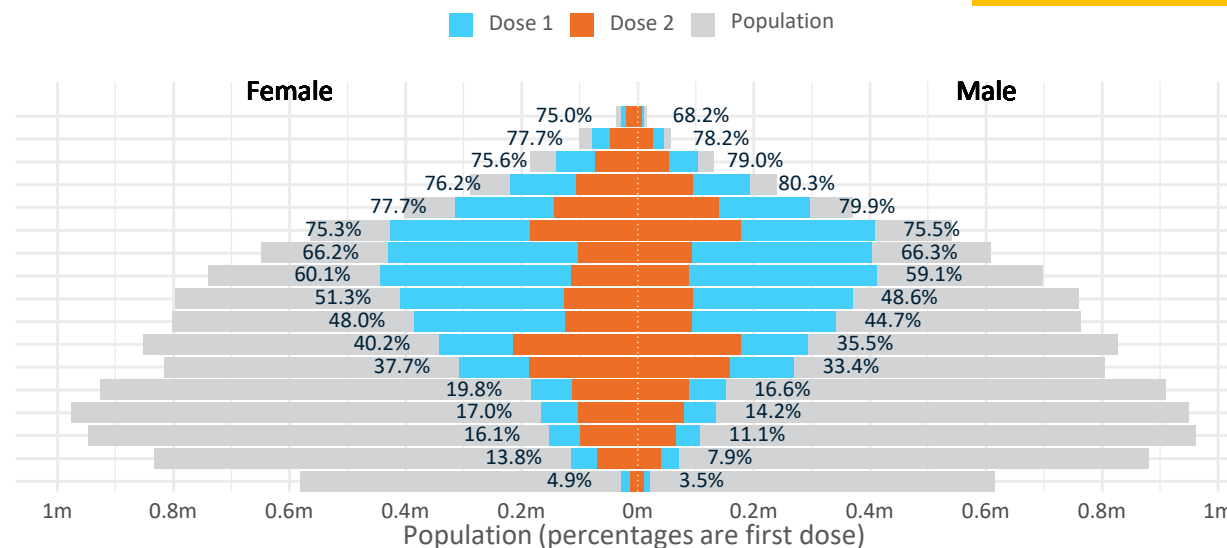
First and second doses by age and sex, using ABS age brackets

Age	Dose 1	Dose 2
95+	38,709 (73.2%)	26,197 (49.5%)
90-94	123,590 (78.0%)	72,846 (46.0%)
85-89	243,656 (77.1%)	125,072 (39.6%)
80-84	412,632 (78.1%)	200,852 (38.0%)
75-79	610,110 (78.9%)	283,477 (36.6%)
70-74	833,852 (75.5%)	362,479 (32.8%)
65-69	834,497 (66.3%)	194,267 (15.4%)
60-64	856,724 (59.6%)	202,736 (14.1%)
55-59	778,701 (50.1%)	220,144 (14.2%)
50-54	725,949 (46.4%)	218,859 (14.0%)
45-49	634,965 (37.9%)	391,700 (23.4%)
40-44	576,298 (35.6%)	345,762 (21.3%)
35-39	334,307 (18.2%)	200,867 (10.9%)
30-34	302,238 (15.7%)	183,233 (9.5%)
25-29	260,992 (13.7%)	164,985 (8.7%)
20-24	185,486 (10.8%)	109,392 (6.4%)
16-19	49,811 (4.2%)	23,823 (2.0%)

AUS	16+	50+	70+
Dose 1	37.84% (7,802,517 doses / 20,619,959 people)	62.38% (5,458,420 doses / 8,749,703 people)	77.10% (2,262,549 doses / 2,934,706 people)
Dose 2	16.13% (3,326,691 doses / 20,619,959 people)	21.79% (1,906,929 doses / 8,749,703 people)	36.49% (1,070,923 doses / 2,934,706 people)

Australia's COVID-19 Vaccine Roadmap

Data as at:
24 Jul 2021



	AUS	ACT	NSW	NT	QLD	SA	TAS	VIC	WA
16 and over - dose 1	7,802,517	177,252	2,432,672	87,712	1,451,030	556,070	201,105	2,153,811	743,369
16 and over - dose 2	3,326,691	80,691	1,034,280	49,689	667,000	236,133	93,061	886,208	280,151
16 and over - population	20,619,959*	344,037	6,565,651	190,571	4,112,707	1,440,400	440,172	5,407,574	2,114,978
16 and over % with dose 1	37.84%	51.52%	37.05%	46.03%	35.28%	38.61%	45.69%	39.83%	35.15%
16 and over % with dose 2	16.13%	23.45%	15.75%	26.07%	16.22%	16.39%	21.14%	16.39%	13.25%
50 and over - dose 1	5,458,420	104,201	1,701,293	40,330	1,049,151	405,073	149,731	1,473,468	535,526
50 and over - dose 2	1,906,929	35,652	643,050	19,568	414,147	136,585	60,963	424,310	172,891
50 and over - population	8,749,703	127,802	2,807,793	62,280	1,758,855	674,384	220,036	2,211,211	885,370
50 and over % with dose 1	62.38%	81.53%	60.59%	64.76%	59.65%	60.07%	68.05%	66.64%	60.49%
50 and over % with dose 2	21.79%	27.90%	22.90%	31.42%	23.55%	20.25%	27.71%	19.19%	19.53%
70 and over - dose 1	2,262,549	37,873	729,750	9,380	449,171	181,573	63,287	579,326	212,300
70 and over - dose 2	1,070,923	19,667	354,535	6,345	226,914	79,322	33,869	253,193	97,192
70 and over - population	2,934,706	39,946	962,606	12,343	577,767	240,514	77,155	763,519	280,281
70 and over % with dose 1	77.10%	94.81%	75.81%	75.99%	77.74%	75.49%	82.03%	75.88%	75.75%
70 and over % with dose 2	36.49%	49.23%	36.83%	51.41%	39.27%	32.98%	43.90%	33.16%	34.68%

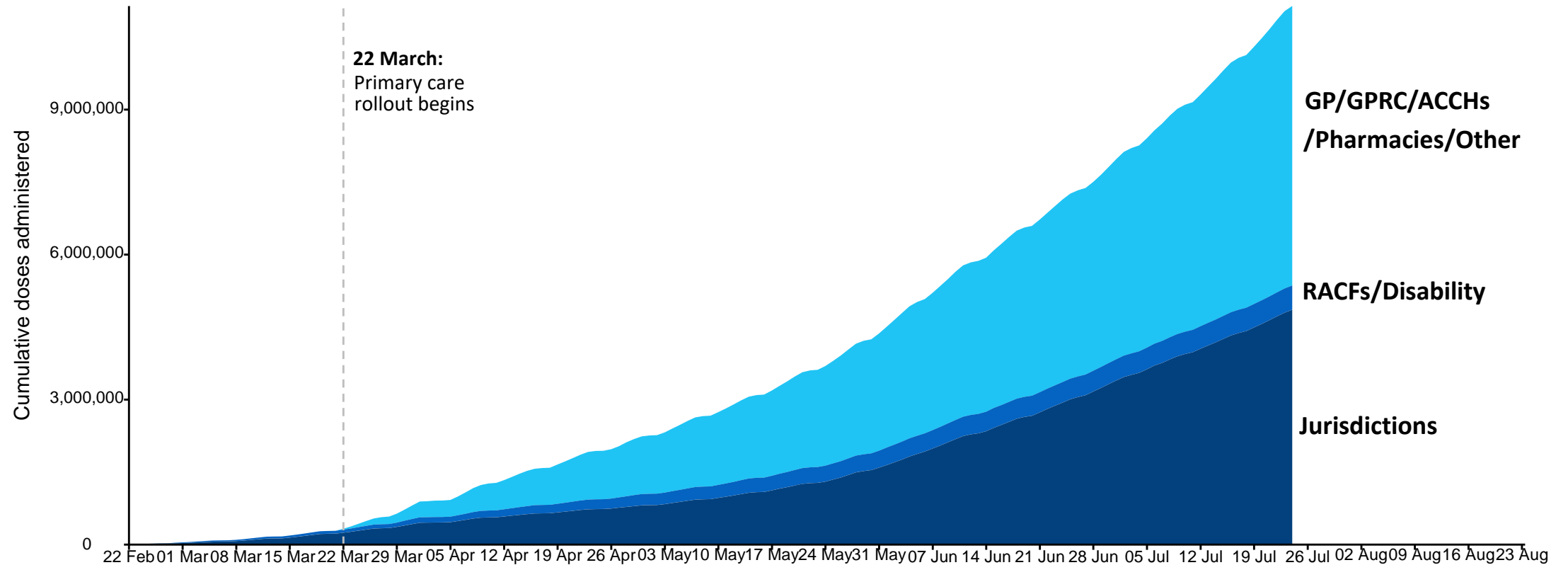
*National population will not equal sum of listed jurisdictions due to a small number of people counted in national population residing in some 'other' territories

Cumulative doses administered by channel

Data as at:
24 Jul 2021

Australia's COVID-19
Vaccine Roadmap

Cumulative doses administered (24 Jul): 11,140,511



Source: Department of Health
Data as at 24 Jul

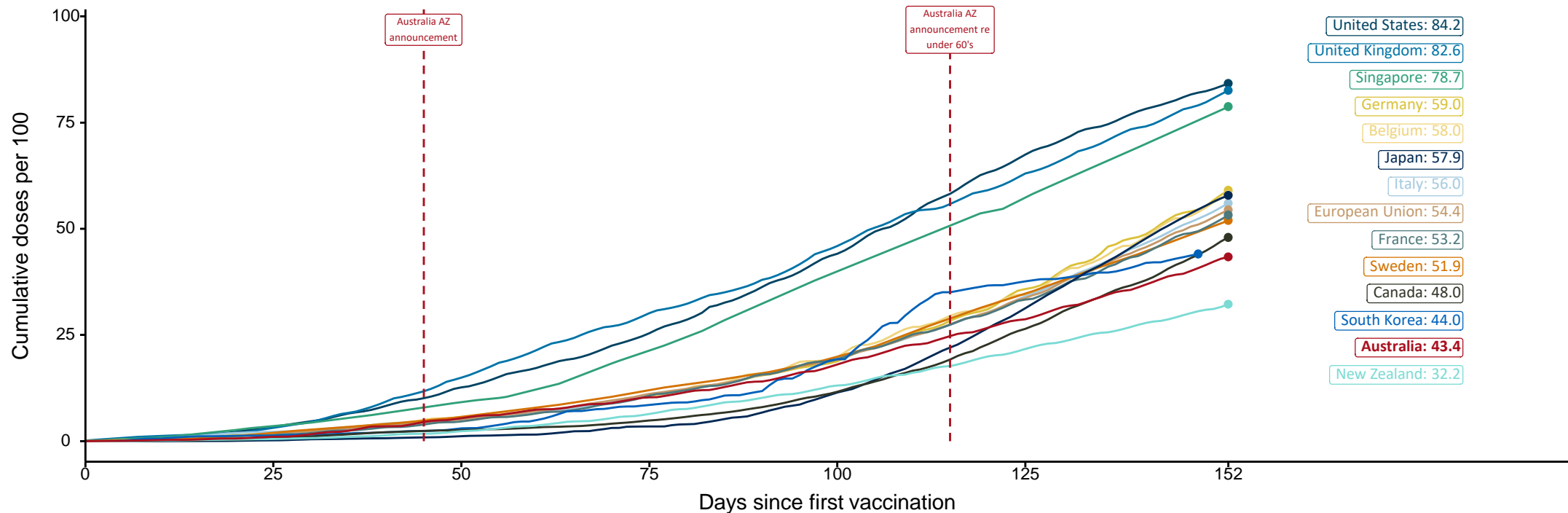
International comparisons at equivalent stages of rollout (Day 152)

Data as at:
24 Jul 2021

Australia's COVID-19
Vaccine Roadmap

Cumulative doses administered (24 Jul): **11,140,511**

The x-axis is truncated at the length of Australia's vaccination program. Countries with intermittent reporting have had their doses per 100 imputed to Australia's current stage of rollout. Israel excluded as it is beyond scale of the graph



Source: Department of Health (Australia), Our World in Data (international)
Latest data: 24 July

Data as at:
24 Jul 2021

Commonwealth aged care doses administered



Aged care and residential
disability doses administered

274,094

First doses

226,382

Second doses

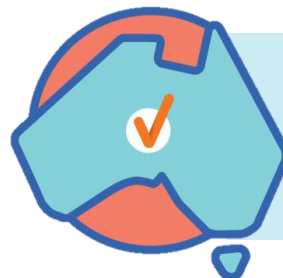
Residential aged care
facilities

2,566

Sites visited for first doses

2,566

Sites visited for second doses



500,476

(+940 last 24 hours)

Total vaccine doses administered in aged
care and disability facilities as at 24 July

Number of doses administered as part of the Commonwealth aged and disability care rollout

NSW

165,162

(+826 last
24 hours)

VIC

133,564

(-6 last
24 hours) *

QLD

89,934

(+120 last
24 hours)

WA

43,722

(+0 last
24 hours)

TAS

17,051

(+0 last
24 hours)

SA

39,851

(+0 last
24 hours)

ACT

7,699

(+0 last
24 hours)

NT

3,493

(+0 last
24 hours)

Data as at:
24 Jul 2021

Commonwealth primary care doses administered



Primary Care vaccine administration sites*

5,123	136	118	158	118
GPs	CVCs	CVCs (Pfizer)	ACCHS	Pharmacy



5,785,218 (+46,358 last 24 hours)

Total vaccine doses administered in primary care settings as at 24 July

Primary Care vaccine administration sites as at week of 19 July



Number of doses administered as part of the Commonwealth primary care rollout

NSW
1,959,471
(+19,461 last 24 hours)

VIC
1,433,090
(+10,953 last 24 hours)

QLD
1,185,582
(+5,939 last 24 hours)

WA
527,157
(+4,736 last 24 hours)

TAS
130,726
(+1,213 last 24 hours)

SA
404,796
(+2,896 last 24 hours)

ACT
98,394
(+956 last 24 hours)

NT
46,002
(+204 last 24 hours)