



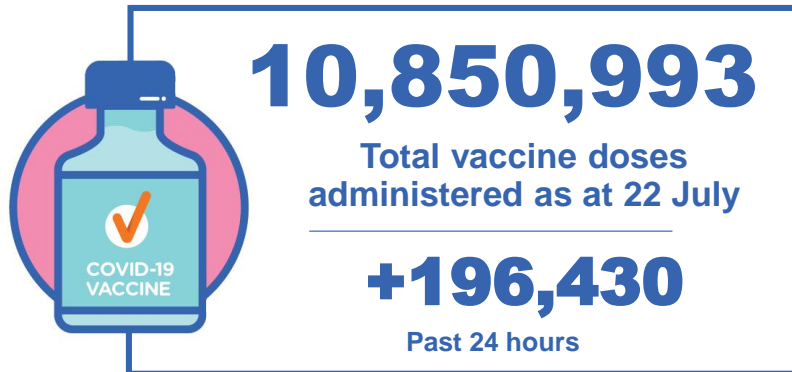
Australian Government
Operation COVID Shield

COVID-19 Vaccine Roll-out

23 July 2021

Data as at:
22 Jul 2021

Total vaccine doses



Commonwealth vaccine doses
6,132,819
(+116,033 last 24 hours)



Commonwealth vaccine doses in primary care
5,637,929
(+111,877 last 24 hours)



Commonwealth vaccine doses in aged and disability facilities
494,890
(+4,156 last 24 hours)



4,718,174 (+80,397 past 24 hours)

Total vaccine doses administered in State and Territory clinics as at 22 July



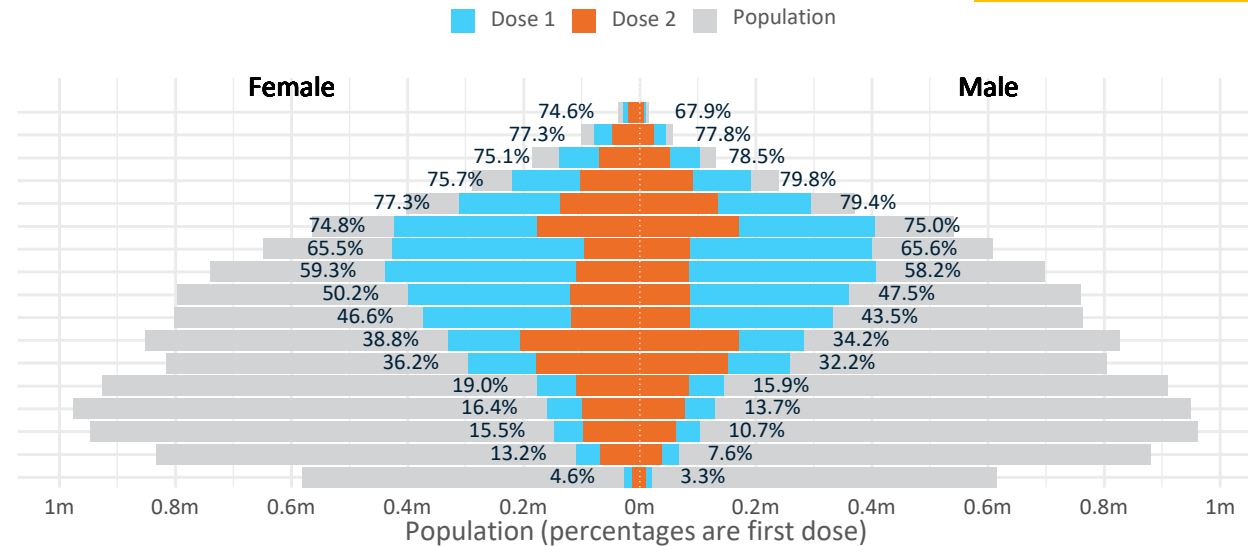
Data as at: 22 Jul 2021

Doses by age and sex

First and second doses by age and sex, using ABS age brackets

	AUS	16+	50+	70+
Dose 1	37.07% (7,642,984 doses / 20,619,959 people)	61.55% (5,385,750 doses / 8,749,703 people)	76.60% (2,248,030 doses / 2,934,706 people)	
Dose 2	15.44% (3,182,918 doses / 20,619,959 people)	20.76% (1,816,711 doses / 8,749,703 people)	35.12% (1,030,719 doses / 2,934,706 people)	

Age	Dose 1	Dose 2
95+	38,487 (72.7%)	25,820 (48.8%)
90-94	122,854 (77.5%)	71,283 (45.0%)
85-89	242,068 (76.6%)	121,071 (38.3%)
80-84	410,127 (77.6%)	193,366 (36.6%)
75-79	606,282 (78.4%)	271,900 (35.1%)
70-74	828,212 (75.0%)	347,279 (31.4%)
65-69	825,967 (65.6%)	183,236 (14.6%)
60-64	845,012 (58.8%)	191,974 (13.4%)
55-59	760,808 (48.9%)	205,814 (13.2%)
50-54	705,933 (45.1%)	204,968 (13.1%)
45-49	613,312 (36.6%)	375,955 (22.4%)
40-44	554,561 (34.2%)	330,420 (20.4%)
35-39	321,236 (17.5%)	194,074 (10.6%)
30-34	291,302 (15.1%)	177,230 (9.2%)
25-29	251,748 (13.2%)	160,106 (8.4%)
20-24	177,998 (10.4%)	105,787 (6.2%)
16-19	47,077 (3.9%)	22,635 (1.9%)



	AUS	ACT	NSW	NT	QLD	SA	TAS	VIC	WA
16 and over - dose 1	7,642,984	176,051	2,365,634	86,829	1,427,333	545,652	198,346	2,113,611	730,014
16 and over - dose 2	3,182,918	79,250	982,170	48,862	640,202	226,395	90,571	847,974	268,002
16 and over - population	20,619,959*	344,037	6,565,651	190,571	4,112,707	1,440,400	440,172	5,407,574	2,114,978
16 and over % with dose 1	37.07%	51.17%	36.03%	45.56%	34.71%	37.88%	45.06%	39.09%	34.52%
16 and over % with dose 2	15.44%	23.04%	14.96%	25.64%	15.57%	15.72%	20.58%	15.68%	12.67%
50 and over - dose 1	5,385,750	103,602	1,670,609	39,996	1,037,798	399,652	148,418	1,456,499	529,518
50 and over - dose 2	1,816,711	34,413	610,448	19,069	397,494	130,155	58,949	402,181	164,234
50 and over - population	8,749,703	127,802	2,807,793	62,280	1,758,855	674,384	220,036	2,211,211	885,370
50 and over % with dose 1	61.55%	81.06%	59.50%	64.22%	59.00%	59.26%	67.45%	65.87%	59.81%
50 and over % with dose 2	20.76%	26.93%	21.74%	30.62%	22.60%	19.30%	26.79%	18.19%	18.55%
70 and over - dose 1	2,248,030	37,719	723,221	9,322	446,699	180,548	62,891	576,434	211,302
70 and over - dose 2	1,030,719	18,963	340,845	6,166	219,531	76,451	32,809	243,413	92,656
70 and over - population	2,934,706	39,946	962,606	12,343	577,767	240,514	77,155	763,519	280,281
70 and over % with dose 1	76.60%	94.42%	75.13%	75.52%	77.31%	75.07%	81.51%	75.50%	75.39%
70 and over % with dose 2	35.12%	47.47%	35.41%	49.96%	38.00%	31.79%	42.52%	31.88%	33.06%

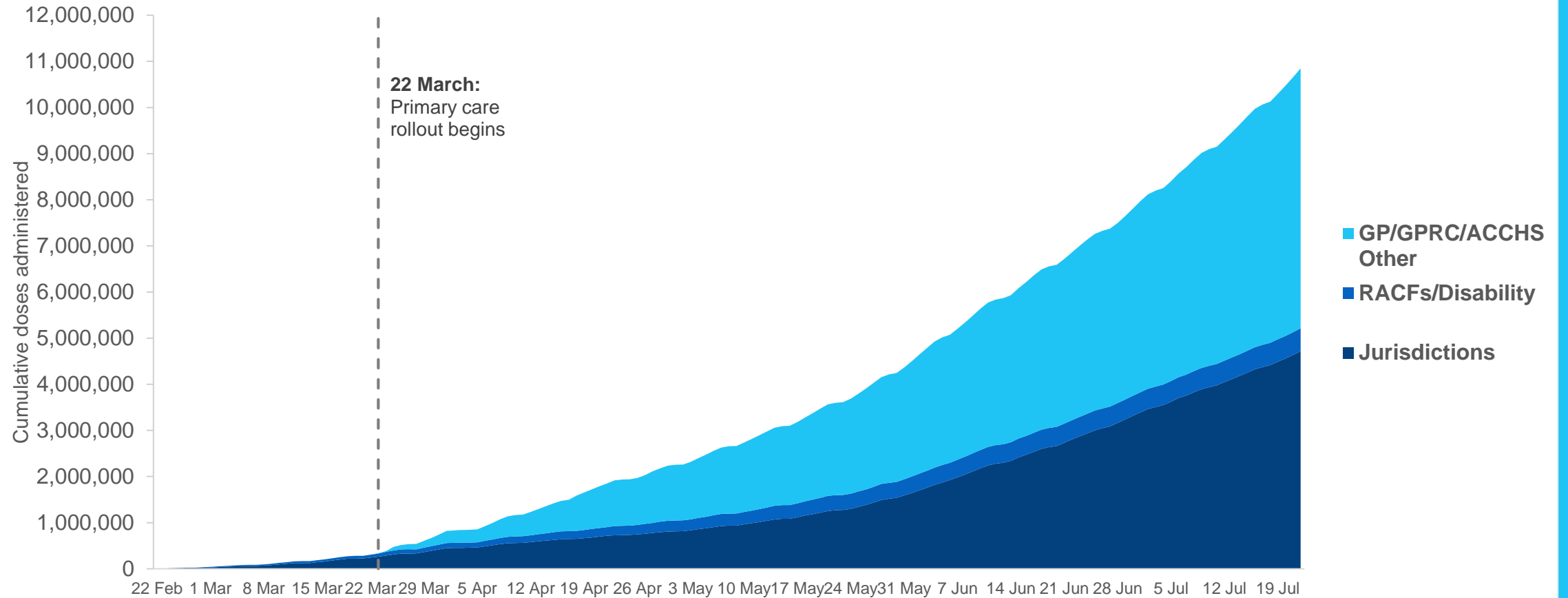
*National population will not equal sum of listed jurisdictions due to a small number of people counted in national population residing in some 'other' territories

Doses sourced from Australian Immunisation Register, population from ABS ERP June 2020

Cumulative doses administered by channel

Data as at:
22 Jul 2021

Cumulative doses administered (22 July): **10,850,993**



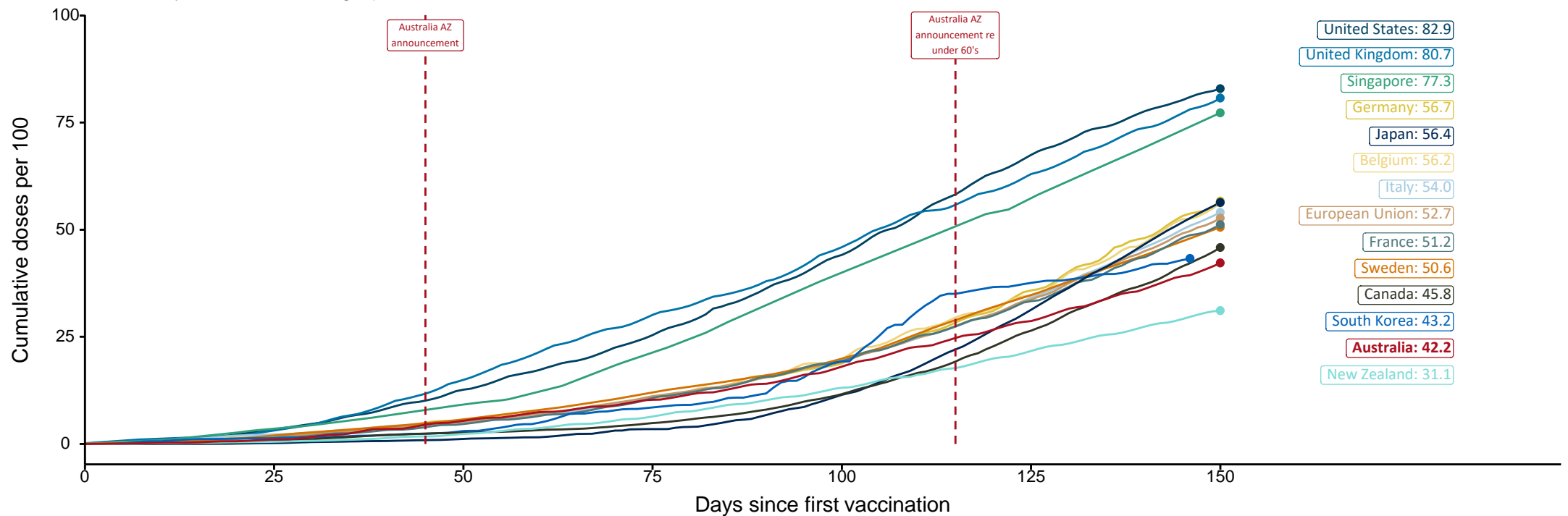
Source: Department of Health
Data as at 22 July

Doses at equivalent stages of rollout (Day 150)

Data as at:
22 Jul 2021

Cumulative doses administered (22 Jul): **10,850,993**

The x-axis is truncated at the length of Australia's vaccination program. Countries with intermittent reporting have had their doses per 100 imputed to Australia's current stage of rollout. Israel excluded as it is beyond scale of the graph.



Source: Department of Health (Australia), Our World in Data (international)
Latest data: 22 July

Data as at:
22 Jul 2021

Commonwealth aged care doses administered



Aged care and residential
disability doses administered

271,135

First doses

223,755

Second doses

Residential aged care
facilities

2,566

Sites visited for first doses

2,566

Sites visited for second doses



494,890

(+4,156 last 24 hours)

Total vaccine doses administered in aged
care and disability facilities as at 22 July

Number of doses administered as part of the Commonwealth aged and disability care rollout

NSW
162,445

(+2,790 last
24 hours)

VIC
132,812

(+611 last
24 hours)

QLD
89,157

(+608 last
24 hours)

WA
43,264

(+181 last
24 hours)

TAS
16,559

(+509 last
24 hours)

SA
39,463

(-558 last
24 hours)

ACT
7,699

(+0 last
24 hours)

NT
3,491

(+15 last
24 hours)

Data as at:
22 Jul 2021

Commonwealth primary care doses administered



Primary Care vaccine administration sites*

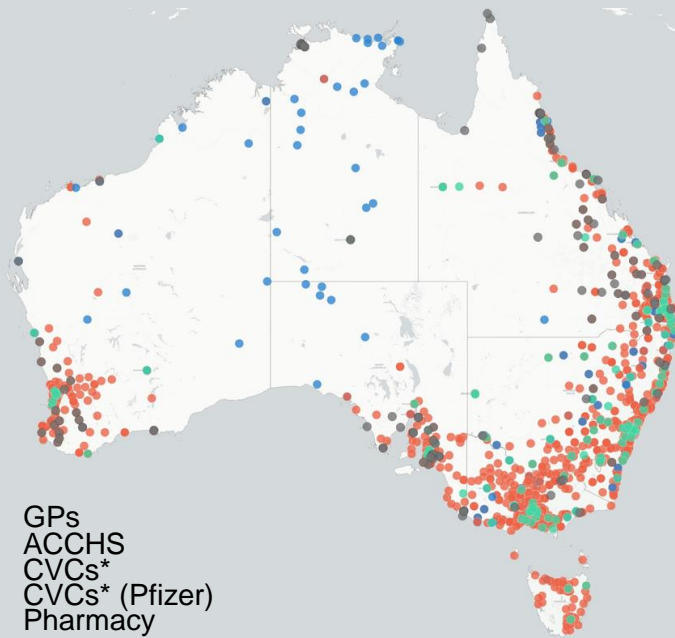
5,123	136	118	158	118
GPs	CVCs	CVCs (Pfizer)	ACCHS	Pharmacy



5,637,929 (+111,877 last 24 hours)

Total vaccine doses administered in primary care settings as at 22 July

Primary Care vaccine administration sites as at week of 19 July



- GPs
- ACCHS
- CVCs*
- CVCs* (Pfizer)
- Pharmacy

Number of doses administered as part of the Commonwealth primary care rollout

NSW
1,897,021
(+47,252 last 24 hours)

VIC
1,400,649
(+25,199 last 24 hours)

QLD
1,161,791
(+19,451 last 24 hours)

WA
514,115
(+8,341 last 24 hours)

TAS
127,682
(+1,926 last 24 hours)

SA
395,269
(+7,362 last 24 hours)

ACT
96,146
(+1,365 last 24 hours)

NT
45,256
(+981 last 24 hours)