



**Australian Government**  
**Operation COVID Shield**

# COVID-19 Vaccine Roll-out

20 July 2021

Data as at:  
19 Jul 2021

# Total vaccine doses



**10,295,444**

Total vaccine doses  
administered as at 19 July

**+169,911**

Past 24 hours



Commonwealth vaccine doses

**5,806,944**

(+95,837 last 24 hours)



Commonwealth vaccine doses  
in primary care

**5,322,175**

(+92,879 last 24 hours)



Commonwealth vaccine doses in  
aged and disability facilities

**484,769**

(+2,958 last 24 hours)



**4,488,500** (+74,074 past 24 hours)

Total vaccine doses administered in  
State and Territory clinics as at 19 July

**NSW**

**1,211,619**

(+22,732 last  
24 hours)

**VIC**

**1,416,523**

(+24,001 last  
24 hours)

**QLD**

**788,036**

(+10,440 last  
24 hours)

**WA**

**411,810**

(+6,229 last  
24 hours)

**TAS**

**143,565**

(+2,147 last  
24 hours)

**SA**

**325,328**

(+5,834 last  
24 hours)

**ACT**

**112,598**

(+1,636 last  
24 hours)

**NT**

**79,021**

(+1,055 last  
24 hours)

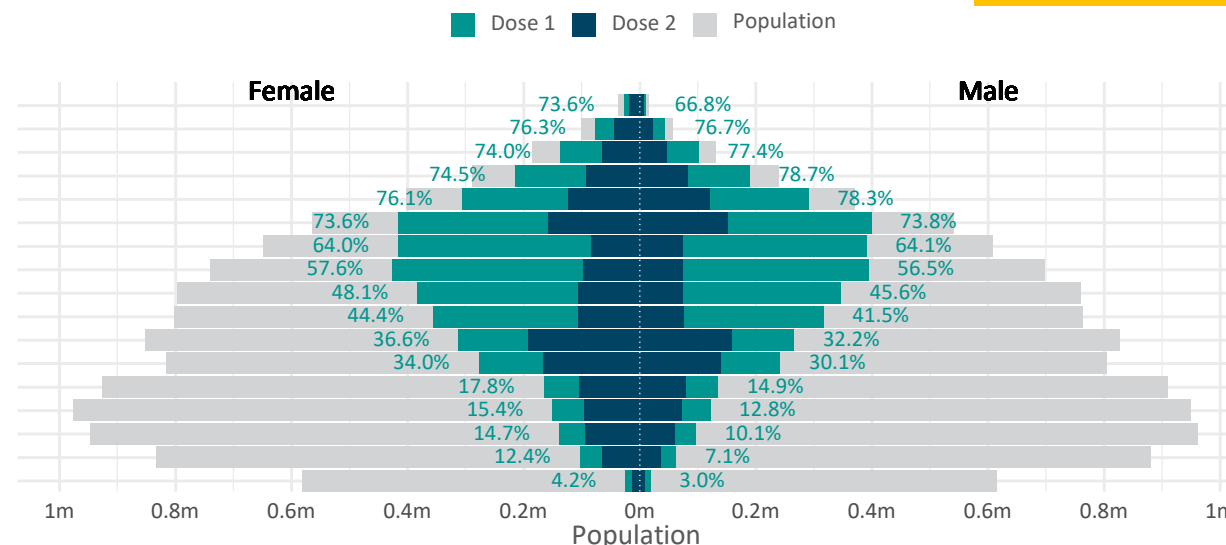
# Doses by age and sex

First and second doses by age and sex, using ABS age brackets

Australia's COVID-19  
Vaccine Roadmap

Data as at:  
19 Jul 2021

Age	Dose 1	Dose 2
95+	37,983 (71.8%)	24,963 (47.2%)
90-94	121,213 (76.5%)	67,371 (42.5%)
85-89	238,546 (75.4%)	111,256 (35.2%)
80-84	404,073 (76.5%)	174,533 (33.0%)
75-79	597,336 (77.2%)	242,702 (31.4%)
70-74	815,019 (73.8%)	309,225 (28.0%)
65-69	807,043 (64.1%)	158,645 (12.6%)
60-64	820,729 (57.1%)	171,001 (11.9%)
55-59	729,791 (46.9%)	180,869 (11.6%)
50-54	673,089 (43.0%)	181,555 (11.6%)
45-49	577,769 (34.5%)	350,641 (20.9%)
40-44	519,438 (32.1%)	306,885 (18.9%)
35-39	300,846 (16.4%)	183,491 (10.0%)
30-34	273,249 (14.2%)	168,384 (8.8%)
25-29	237,466 (12.5%)	153,158 (8.0%)
20-24	166,380 (9.7%)	100,795 (5.9%)
16-19	43,119 (3.6%)	20,867 (1.7%)



	AUS	ACT	NSW	NT	QLD	SA	TAS	VIC	WA
16 and over - dose 1	7,363,089	170,650	2,250,087	83,255	1,383,625	524,902	192,402	2,052,295	706,325
16 and over - dose 2	2,906,341	74,460	882,844	45,051	587,289	206,339	84,930	784,330	241,560
16 and over - population	20,619,959*	344,037	6,565,651	190,571	4,112,707	1,440,400	440,172	5,407,574	2,114,978
16 and over % with dose 1	35.71%	49.60%	34.27%	43.69%	33.64%	36.44%	43.71%	37.95%	33.40%
16 and over % with dose 2	14.09%	21.64%	13.45%	23.64%	14.28%	14.33%	19.29%	14.50%	11.42%
50 and over - dose 1	5,244,822	101,184	1,611,740	38,835	1,013,579	388,034	145,531	1,427,237	518,995
50 and over - dose 2	1,622,120	31,572	539,389	17,515	359,027	115,635	54,683	358,475	146,027
50 and over - population	8,749,703	127,802	2,807,793	62,280	1,758,855	674,384	220,036	2,211,211	885,370
50 and over % with dose 1	59.94%	79.17%	57.40%	62.36%	57.63%	57.54%	66.14%	64.55%	58.62%
50 and over % with dose 2	18.54%	24.70%	19.21%	28.12%	20.41%	17.15%	24.85%	16.21%	16.49%
70 and over - dose 1	2,214,170	37,375	708,530	9,183	440,644	177,763	62,199	569,751	208,822
70 and over - dose 2	930,050	17,612	306,335	5,725	199,101	68,681	30,510	218,148	84,038
70 and over - population	2,934,706	39,946	962,606	12,343	577,767	240,514	77,155	763,519	280,281
70 and over % with dose 1	75.45%	93.56%	73.61%	74.40%	76.27%	73.91%	80.62%	74.62%	74.50%
70 and over % with dose 2	31.69%	44.09%	31.82%	46.38%	34.46%	28.56%	39.54%	28.57%	29.98%

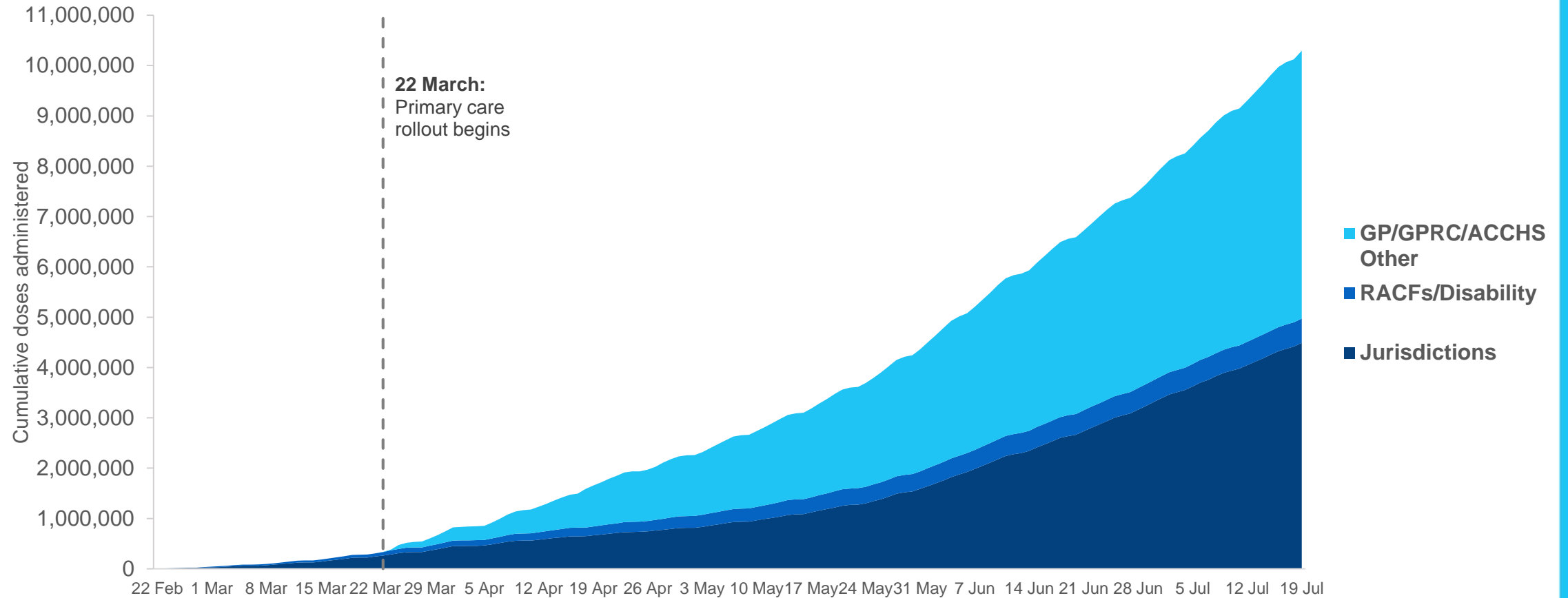
\*National population will not equal sum of listed jurisdictions due to a small number of people counted in national population residing in some 'other' territories

# Cumulative doses administered by channel

Data as at:  
19 Jul 2021

Australia's COVID-19  
Vaccine Roadmap

Cumulative doses administered (19 July): **10,295,444**



Source: Department of Health  
Data as at 19 July

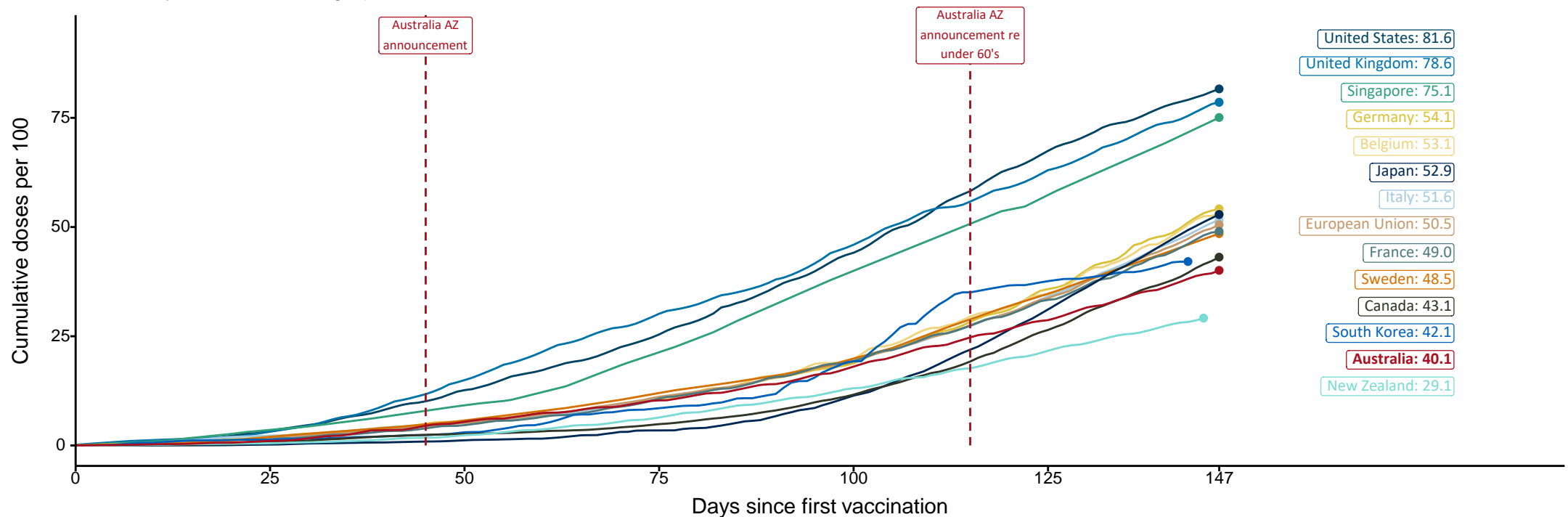
# International comparisons at equivalent stages of rollout (Day 147)

Data as at:  
19 Jul 2021

Australia's COVID-19  
Vaccine Roadmap

Cumulative doses administered (19 Jul): **10,295,444**

The x-axis is truncated at the length of Australia's vaccination program. Countries with intermittent reporting have had their doses per 100 imputed to Australia's current stage of rollout. Israel excluded as it is beyond scale of the graph.



Source: Department of Health (Australia), Our World in Data (international)  
Latest data: 19 July

Data as at:  
19 Jul 2021

# Commonwealth aged care doses administered



Aged care and residential  
disability doses administered

**265,900**

First doses

**218,869**

Second doses

Residential aged care  
facilities

**2,566**

Sites visited for first doses

**2,566**

Sites visited for second doses



**484,769**

(+2,958 last 24 hours)

Total vaccine doses administered in aged  
care and disability facilities as at 19 July

Number of doses administered as part of the Commonwealth aged and disability care rollout

**NSW**  
**157,641**

(+1,109 last  
24 hours)

**VIC**  
**130,765**

(+364 last  
24 hours)

**QLD**  
**88,081**

(+709 last  
24 hours)

**WA**  
**42,387**

(+233 last  
24 hours)

**TAS**  
**15,293**

(+253 last  
24 hours)

**SA**  
**39,481**

(+209 last  
24 hours)

**ACT**  
**7,686**

(+0 last  
24 hours)

**NT**  
**3,435**

(+81 last  
24 hours)

Data as at:  
19 Jul 2021

# Commonwealth primary care doses administered



## Primary Care vaccine administration sites\*

5,123	136	118	158	118
GPs	CVCs	CVCs (Pfizer)	ACCHS	Pharmacy



**5,322,175** (+92,879 last 24 hours)

Total vaccine doses administered in primary care settings as at 19 July

## Primary Care vaccine administration sites as at week of 19 July



Number of doses administered as part of the Commonwealth primary care rollout

**NSW**  
**1,767,272**  
(+41,200 last 24 hours)

**VIC**  
**1,329,811**  
(+21,164 last 24 hours)

**QLD**  
**1,103,847**  
(+14,614 last 24 hours)

**WA**  
**490,139**  
(+7,110 last 24 hours)

**TAS**  
**122,792**  
(+1,960 last 24 hours)

**SA**  
**373,838**  
(+3,888 last 24 hours)

**ACT**  
**92,191**  
(+2,076 last 24 hours)

**NT**  
**42,285**  
(+867 last 24 hours)