

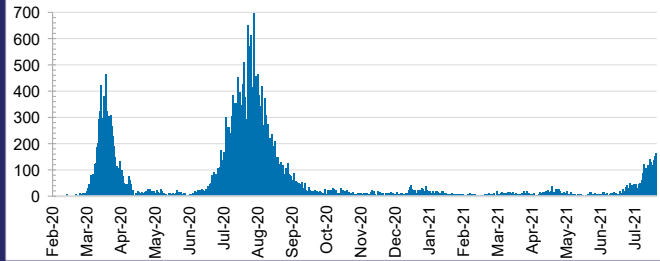


CURRENT STATUS OF CONFIRMED CASES

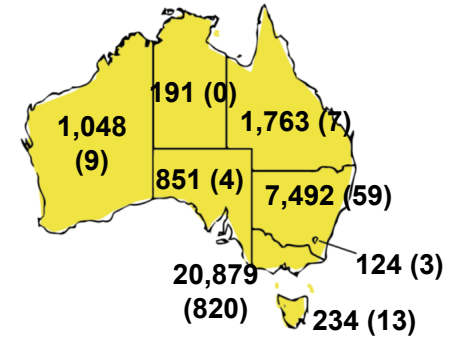
32,582 **915** **1,835**

Total cases Total deaths Active cases

DAILY NUMBER OF REPORTED CASES



CASES (DEATHS) BY STATE AND TERRITORIES



35



ACT	NSW	NT	QLD	SA	TAS	VIC	WA
0	32	0	1	0	0	2	0

173



ACT	NSW	NT	QLD	SA	TAS	VIC	WA
0	137	3	25	1	0	7	0

23,663,728



0.1% POSITIVE

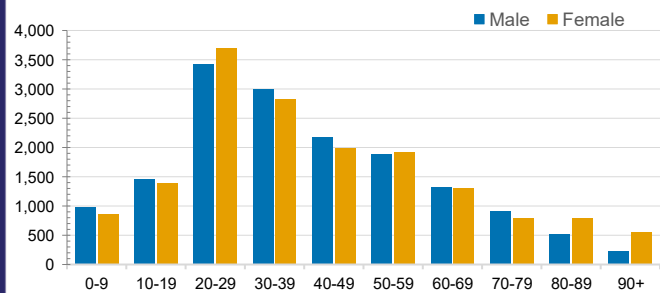
ACT	NSW	NT	QLD
261,090	8,307,417	285,711	3,245,833
POSITIVE	POSITIVE	POSITIVE	POSITIVE
0.0%	0.1%	0.1%	0.1%
SA	TAS	VIC	WA
1,775,212	285,223	8,018,601	1,484,641
POSITIVE	POSITIVE	POSITIVE	POSITIVE
0.0%	0.1%	0.3%	0.1%

CASES IN AGED CARE SERVICES

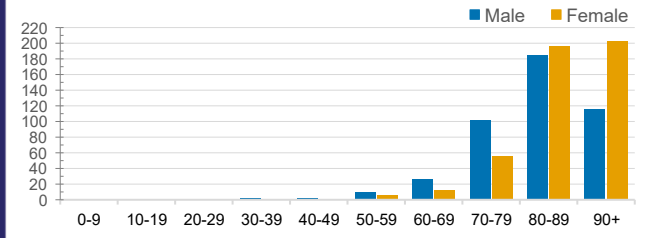
Confirmed Cases	Australia	ACT	NSW	NT	QLD	SA	TAS	VIC	WA
Residential Care Recipients	2060 [1366] (685)	0	67 [33] (28)	0	1 (1)	0	1 (1)	1991 [1333] (655)	0
In Home Care Recipients	83 [73] (9)	0	15 [13] (1)	0	8 [8]	1 [1]	5 [3] (2)	53 [48] (5)	1 (1)

Cases in care recipients [recovered] (deaths)

CASES BY AGE GROUP AND SEX

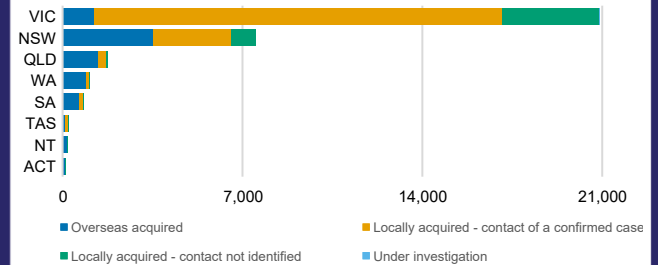


DEATHS BY AGE GROUP AND SEX



CASES BY SOURCE OF INFECTION

Australia (% of all confirmed cases)



PUBLIC HEALTH RESPONSE MEASURE

Proportion of total cases under investigation

