

# COVID-19 Vaccine Roll-out

9 April 2021

# Total vaccine doses



**1,077,511**

Total vaccine doses  
administered as at 8 April

**+81,297**

Past 24 hours



**536,169**

Total vaccine doses administered as in  
State clinics as at 8 April

**+26,298**

past 24 hours



**408,290**

Commonwealth vaccine doses  
in Primary care

**+47,207**

past 24 hours



**133,052**

Commonwealth vaccine doses in  
aged and disability facilities

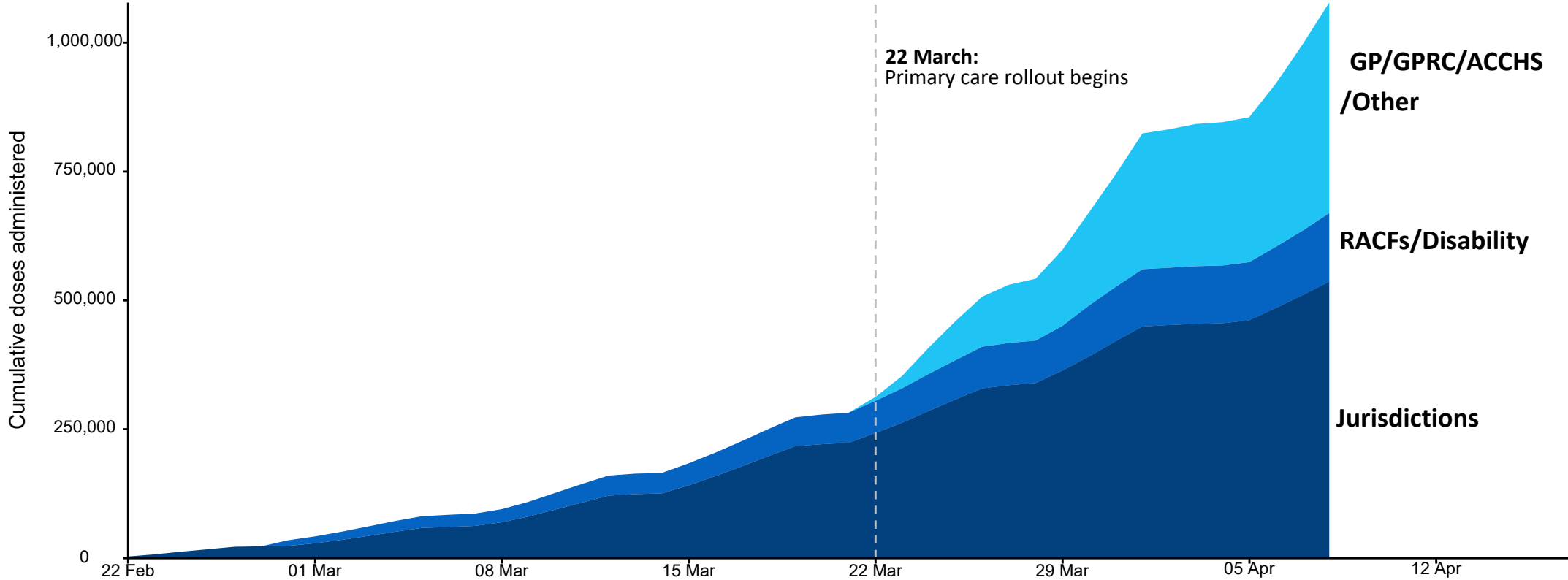
**+7,792**

past 24 hours



# Cumulative doses administered by channel

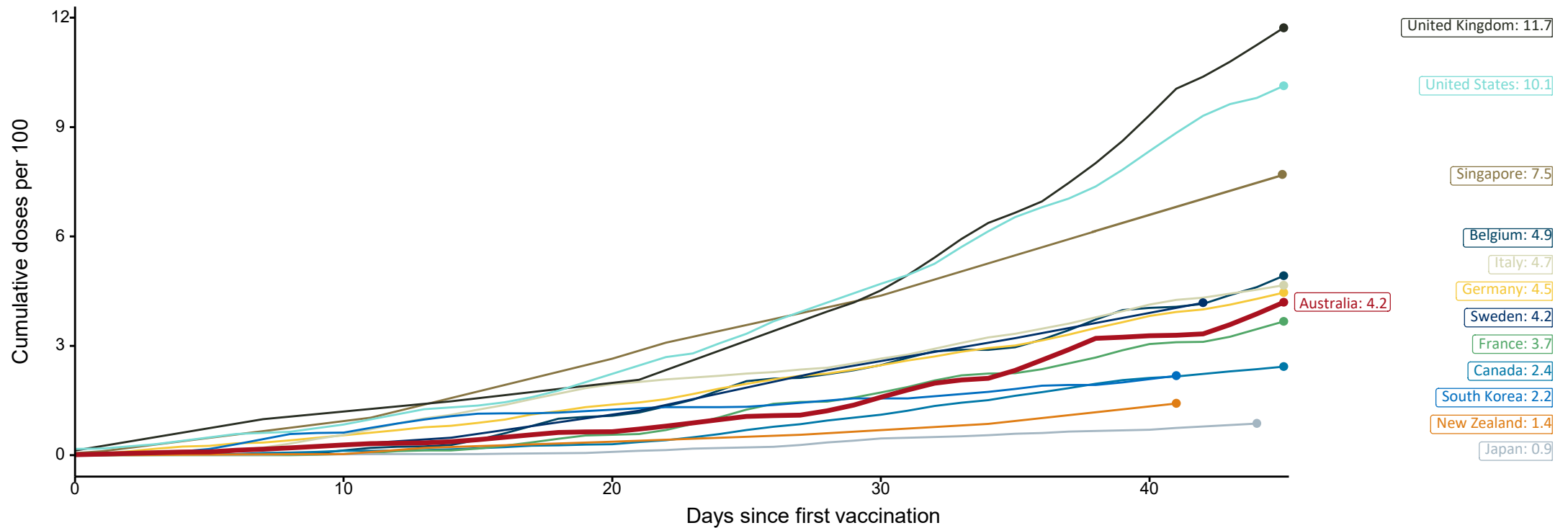
Cumulative doses administered (8 Apr): 1,077,511



Source: Department of Health  
Data as at 08 Apr

# International Comparisons at equivalent stage of rollout

The x-axis is truncated at the length of Australia's vaccination program. Some countries started later. Israel excluded as it is beyond scale of the graph



Source: Department of Health (Australia), Our World in Data (international)  
 Latest data: 08 April

# Commonwealth aged care doses administered



Aged care and residential  
disability doses administered

**90,622**

First doses

**42,430**

Second doses

Residential Aged care  
facilities

**1052**

Sites visited for first doses

**475**

Sites visited for second doses



**133,052**

(+7,792 last 24 hours)

Commonwealth vaccine doses in aged and  
disability facilities

Number of doses administered as part of Commonwealth aged and disability care rollout



# Commonwealth Primary Care doses administered



Primary Care vaccine administration sites

**2,883**  
GP sites

**132**  
GPRC sites

**118**  
ACCHS

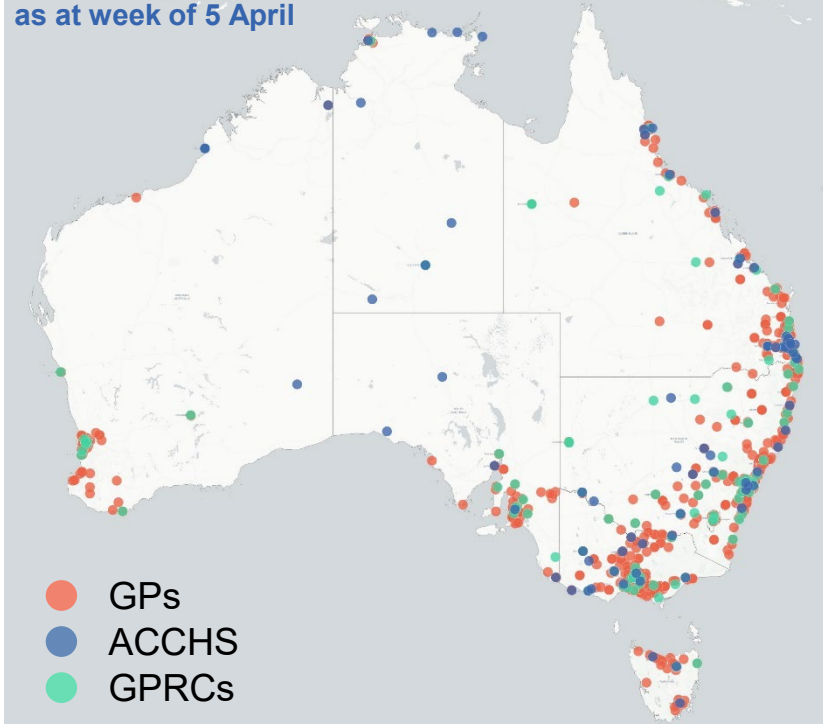


**408,290**

(+47,207 last 24 hours)

Vaccine doses administered in Primary Care settings as at 8 April 2021

Primary Care vaccine administration sites as at week of 5 April



Number of doses administered by primary care sites by jurisdiction

