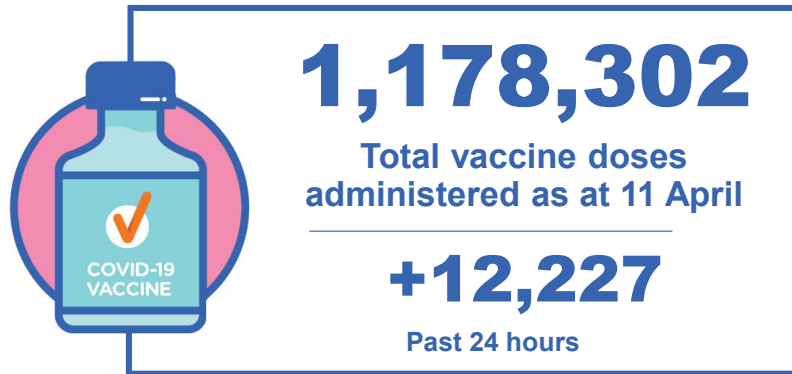


COVID-19 Vaccine Roll-out

12 April 2021

Data as at:
11 Apr 2021

Total vaccine doses



Commonwealth vaccine doses
616,568
(+9,061 last 24 hours)



Commonwealth vaccine doses in primary care
473,578
(+8,138 last 24 hours)



Commonwealth vaccine doses in aged and disability facilities
142,990
(+923 last 24 hours)



561,734 (+3,166 last 24 hours)

Total vaccine doses administered in State and Territory clinics as at 11 April



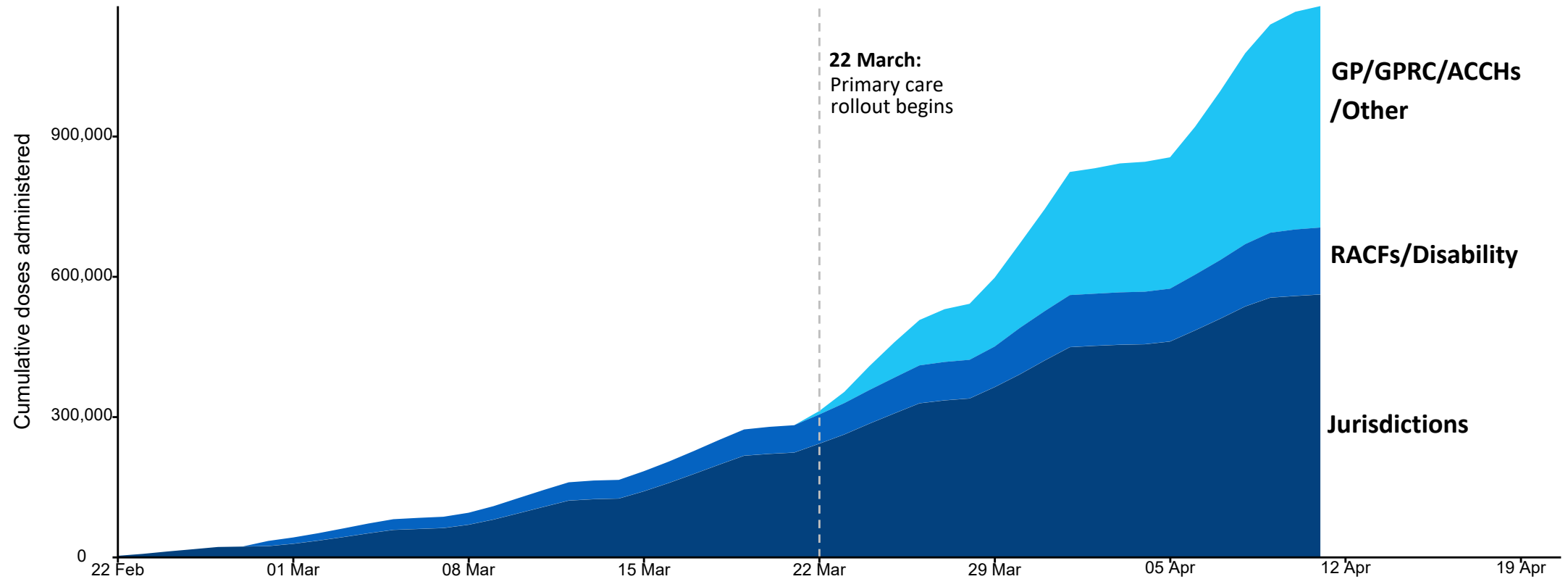
* Source: Australian Immunisation Register and self reported data

** NSW reported no vaccinations.

Cumulative doses administered by channel

Data as at:
11 Apr 2021

Cumulative doses administered (11 Apr): 1,178,302



Source: Department of Health
Data as at 11 Apr

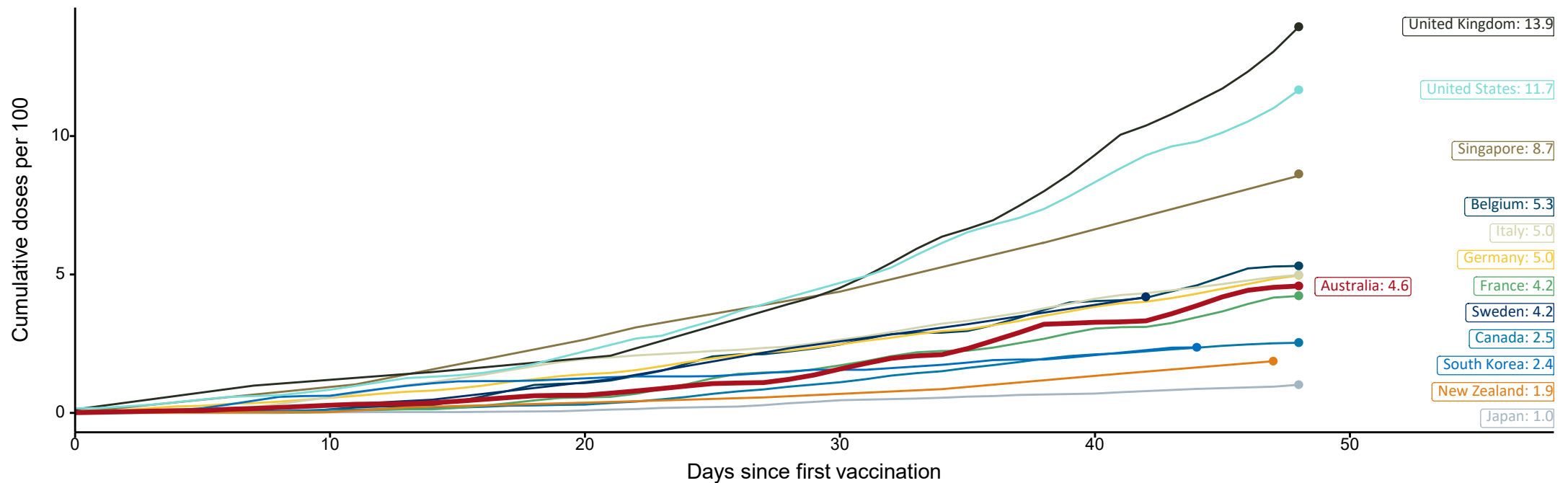
International comparisons at equivalent stages of rollout

Data as at: 11 Apr 2021

Cumulative doses administered (11 Apr): 1,178,302

The x-axis is truncated at the length of Australia's vaccination program. Some countries started later and some countries do not have daily data points so the closest day to AUS's we have data for is used.

Israel excluded as it is beyond scale of the graph



Source: Department of Health (Australia), Our World in Data (international)
Latest data: 11 April

Data as at:
11 Apr 2021

Commonwealth aged care doses administered



Aged care and residential
disability doses administered

95,770

First doses

47,220

Second doses

Residential aged care
facilities

1,121

Sites visited for first doses

533

Sites visited for second doses



142,990

(+923 last 24 hours)

Total vaccine doses administered in aged
care and disability facilities as at 11 April

Number of doses administered as part of the Commonwealth aged and disability care rollout

NSW
39,787

(+507 last
24 hours)

VIC
28,050

(+0 last
24 hours)

QLD
34,856

(+416 last
24 hours)

WA
15,839

(+0 last
24 hours)

TAS
5,520

(+0 last
24 hours)

SA
12,449

(+0 last
24 hours)

ACT
5,186

(+0 last
24 hours)

NT
1,303

(+0 last
24 hours)

Commonwealth primary care doses administered

Data as at:
11 Apr 2021



Primary Care vaccine administration sites*

4,039
GP sites

132
GPRC sites

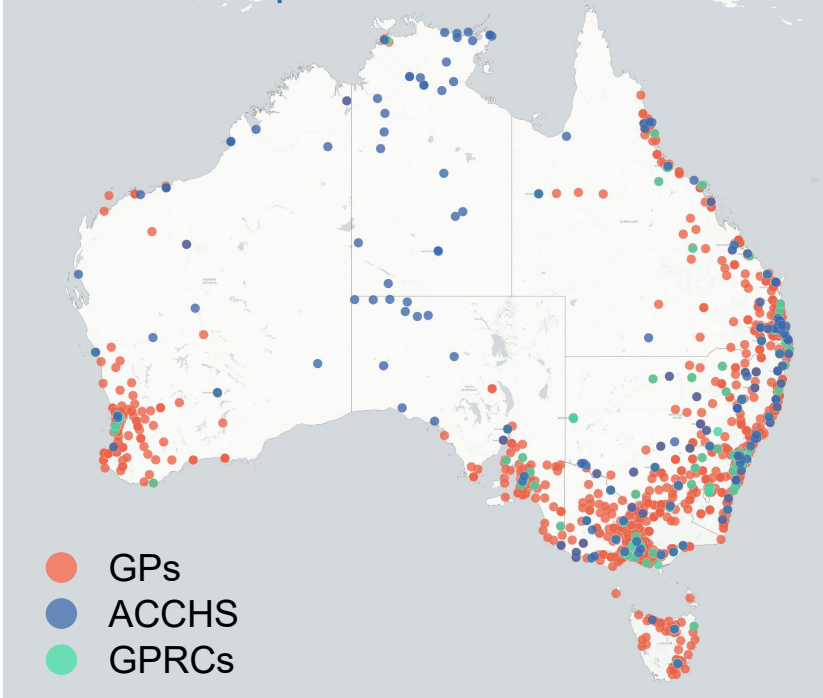
134
ACCHS



473,578 (+8,138 last 24 hours)

Total Commonwealth vaccine doses administered in primary care settings as at 11 April

Primary Care vaccine administration sites as at week of 12 April*



Number of doses administered as part of the Commonwealth primary care rollout

NSW
152,996
(+1,496 last 24 hours)

VIC
112,872
(+2,625 last 24 hours)

QLD
99,084
(+1,743 last 24 hours)

WA
39,787
(+773 last 24 hours)

TAS
16,308
(+514 last 24 hours)

SA
39,657
(+433 last 24 hours)

ACT
9,729
(+543 last 24 hours)

NT
3,145
(+11 last 24 hours)

* Source: updated weekly

Administration and Utilisation

Doses as at Week 7

	Distributed (including coming weeks)	Available (delivered weeks 1-6, until 4 April)	Administered (weeks 1-7, until 11 April)	Available minus Administered	Estimated Dose Utilisation % (See note)
NSW	267,740	225,710	151,535	74,175	77%
VIC	267,490	225,010	144,320	80,690	74%
QLD	205,880	170,610	109,314	61,296	74%
WA	106,100	93,400	67,146	26,254	82%
SA	95,080	79,990	37,656	42,334	57%
TAS	32,730	23,550	23,727	-	Fully utilised*
NT	20,310	15,800	10,578	5,222	77%
ACT	24,410	18,800	17,458	-	Fully utilised*
Jurisdiction delivered total	1,019,740	852,870	561,734	291,136	76%
Commonwealth Aged Care and Disability	159,744	125,784	142,990	-	Fully utilised*
Commonwealth Primary Care	1,255,240	926,640	473,578	453,062	61%
Total	2,434,724	1,905,294	1,178,302	726,992	72%

Note:

- Allocated - Allocations based on approved 12 week dose allocation.
- Distributed - Total doses delivered per Logistics Provider data.
- Available – Total doses available is stock on hand at sites and is based on Weeks 1-6 deliveries (i.e. does not include those deliveries made in Week 7, which would not have been available for administration).
- Administered - Doses administered as at 11 April 21.
- The dose utilisation is calculated based on the total doses administered and a small % wastage in line with international standards in relation to total available doses.
- For Aged Care & Disability, the doses available for administration is for the full period (Weeks 1-6).
- **Fully utilised:** TAS, ACT and Aged Care and Disability have administered all their doses from the available column and are administering doses distributed in Week 7.