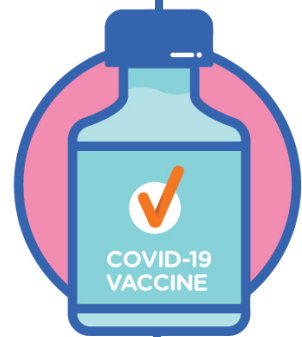


COVID-19 Vaccine Roll-out

11 April 2021

Total vaccine doses



1,166,075

Total vaccine doses administered as at 10 April

+27,209

Past 24 hours



558,568

Total vaccine doses administered in State and Territory clinics as at 10 April

+3,613

Past 24 hours



Commonwealth vaccine doses

607,507

(+23,596 last 24 hours)



Commonwealth vaccine doses in primary care

465,440

(+20,216 last 24 hours)



Commonwealth vaccine doses in aged and disability facilities

142,067

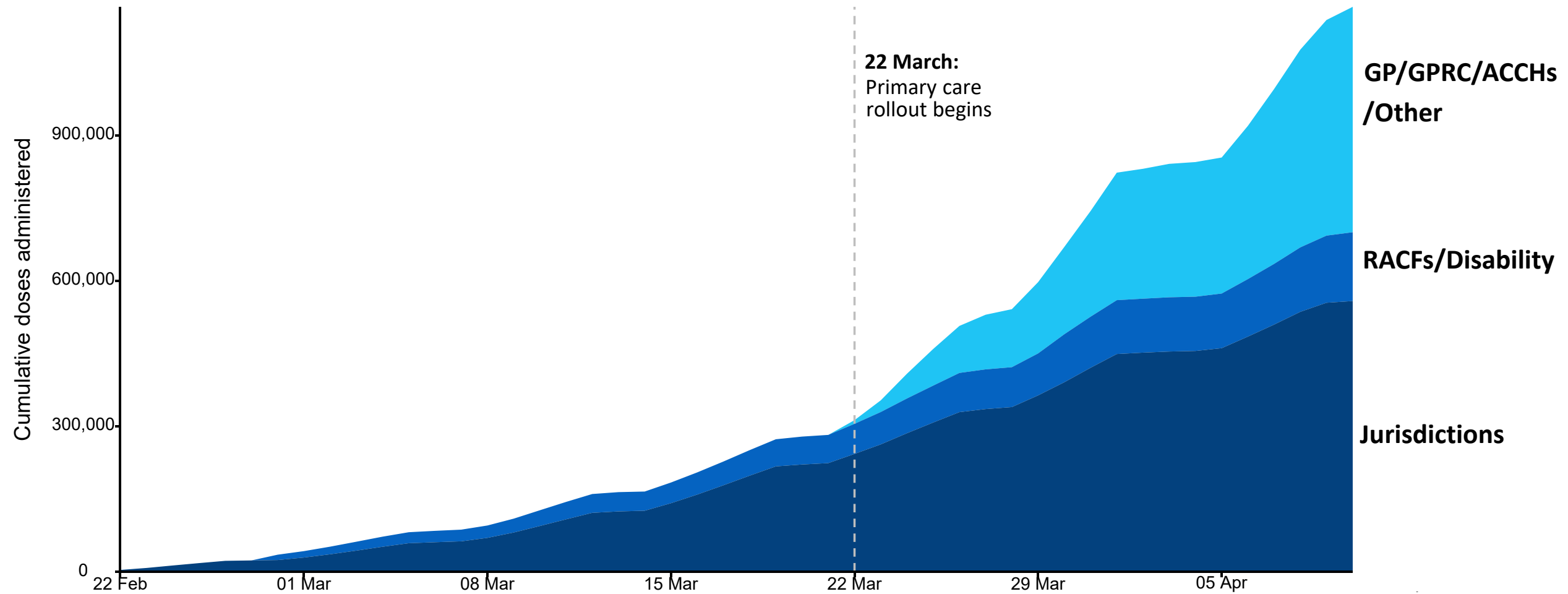
(+3,380 last 24 hours)



Cumulative doses administered by channel

Data as at:
10 Apr 2021

Cumulative doses administered (10 Apr): **1,166,075**



Source: Department of Health
Data as at 10 Apr

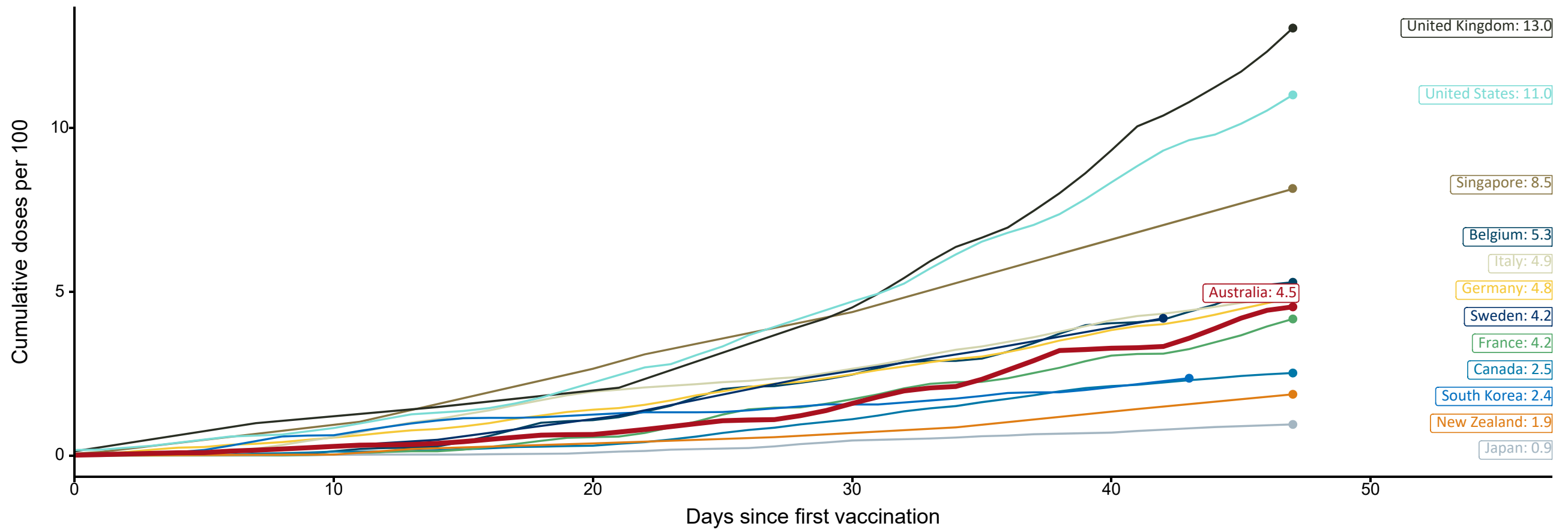
International comparisons at equivalent stages of rollout

Data as at:
10 Apr 2021

Australia's COVID-19
Vaccine Roadmap

Cumulative doses administered (10 Apr): **1,166,075**

The x-axis is truncated at the length of Australia's vaccination program. Some countries started later and some countries do not have daily data points so the closest day to AUS's we have data for is used. Israel excluded as it is beyond scale of the graph



Source: Department of Health (Australia), Our World in Data (international)
Latest data: 10 April

Data as at:
10 Apr 2021

Commonwealth aged care doses administered



Aged care and residential
disability doses administered

95,292
First doses

46,775
Second doses

Residential Aged care
facilities

1,116
Sites visited for first doses

529
Sites visited for second doses



142,067

Total vaccine doses administered in aged
care and disability facilities as at 10 April

+3,380
Past 24 hours

Number of doses administered as part of the Commonwealth aged and disability care rollout

NSW
39,280
(+1,802 last
24 hours)

VIC
28,050
(+257 last
24 hours)

QLD
34,440
(+1,016 last
24 hours)

WA
15,839
(+220 last
24 hours)

TAS
5,520
(+0 last
24 hours)

SA
12,449
(+85 last
24 hours)

ACT
5,186
(+0 last
24 hours)

NT
1,303
(+0 last
24 hours)

Commonwealth primary care doses administered

Data as at:
10 Apr 2021



Primary Care vaccine administration sites*

2,883
GP sites

132
GPRC sites

118
ACCHS

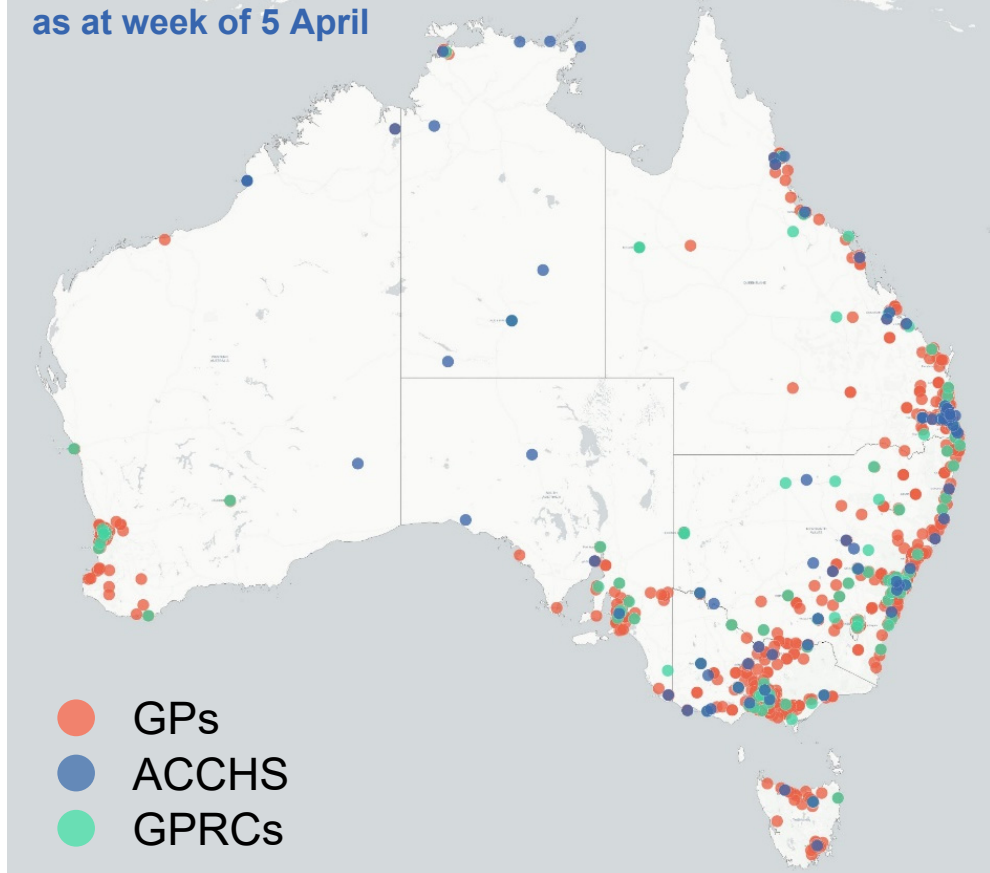


465,440

Total vaccine doses administered in primary Care settings as at 10 April

+20,216
Past 24 hours

Primary Care vaccine administration sites as at week of 5 April



Number of doses administered as part of the Commonwealth primary care rollout

NSW
151,500
(+4,833 last 24 hours)

VIC
110,247
(+5,864 last 24 hours)

QLD
97,341
(+3,752 last 24 hours)

WA
39,014
(+2,519 last 24 hours)

TAS
15,794
(+1,213 last 24 hours)

SA
39,224
(+1,481 last 24 hours)

ACT
9,186
(+520 last 24 hours)

NT
3,134
(+34 last 24 hours)

*updated weekly