



Australian Government

Australia's COVID-19
Vaccine Roadmap

Priority groups for COVID-19 Vaccination Program: Phase 1B

Update 18 March 2021

BE COVIDSAFE

COVID-19
VACCINATION
Safe. Effective. Free.

COVID-19 vaccine national roll-out strategy

Phase 1a – up to 1.4m doses

Commenced 22 February 2021

Quarantine and border workers	70,000
Frontline health care worker sub-groups for prioritisation	100,000
Aged care and disability care staff	318,000
Aged care and disability care residents	190,000
Total	678,000

Phase 1b – up to 14.8m doses

Commencing 22 March 2021

Elderly adults aged 80 years and over	1,045,000
Elderly adults aged 70-79 years	1,858,000
Other health care workers	953,000
Aboriginal and Torres Strait Islander people > 55	87,000
Younger adults with an underlying medical condition, including those with a disability	2,000,000
Critical and high risk workers including defence, police, fire, emergency services and meat processing	196,000
Total	6,139,000

Phase 2a – up to 15.8m doses

Adults aged 60-69 years	2,650,000
Adults aged 50-59 years	3,080,000
Aboriginal and Torres Strait Islander people 18- 54	387,000
Other critical and high risk workers	453,000
Total	6,570,000

Phase 2b – up to 16m doses

Balance of adult population	6,643,000
<i>Catch up any unvaccinated Australians from previous phases</i>	

Phase 3 – up to 13.6m doses

< 18 if recommended*	5,670,000
----------------------	-----------

Population numbers are current estimates for each category.
* 16 and 17 year olds will be able to access the Pfizer vaccine in line with the relevant cohort.

Who will be vaccinated under Phase 1b, based on recommendations by the Australian Technical Advisory Group on Immunisation



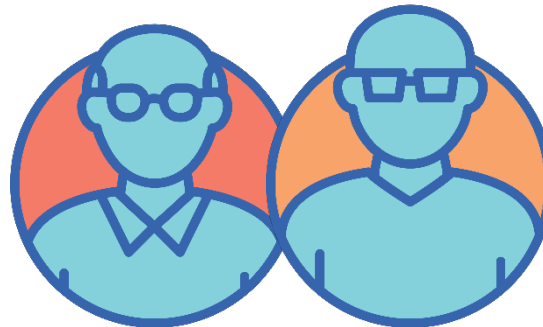
Healthcare workers currently employed and not included in Phase 1a



Household contacts of quarantine and border workers



Critical and high risk workers currently employed



People 80 years and over

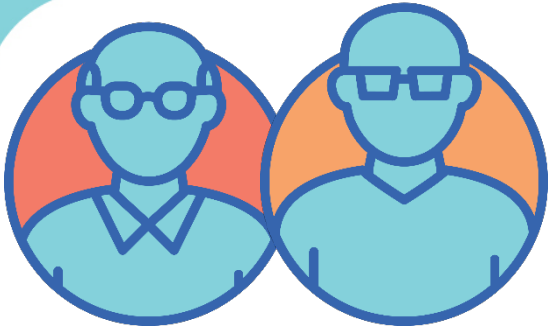
People 70 years and over



Aboriginal and Torres Strait Islander people 55 years and over



Younger people with a specified underlying medical condition (note, this list includes significant disabilities)



Phase 1b: Elderly people

Who

- People 80 years and over
- People 70 years and over

Where

Phase 1b sites
by appointment

Requirements

All standard forms of identification (drivers licence, passport) will be accepted

For individuals attending their usual GP, the clinic's records may be relied upon as evidence.

Other forms of accepted evidence include:

- My Health Record
- Government issued documents with date of birth (e.g. Centrelink, Medicare, Department of Veterans Affairs)



Phase 1b: Aboriginal and Torres Strait Islander People

Who

- Aboriginal and Torres Strait Islander people 55 years and over

Where

Phase 1b sites by
appointment

- Aboriginal and Torres Strait Islander people aged under 55 who meet other phase 1b criteria, i.e. specified underlying medical condition, health care worker, critical or high risk worker

Requirements

As for general population for age eligibility

Self-identification as an Aboriginal and/or Torres Strait Islander at the time of vaccination, which may be verbal

As for the criteria for the relevant priority cohort



Phase 1b: Healthcare, Aged Care and Disability Workers

Who

- Individuals working in health care including doctors, nurses and midwives, allied health professionals, dental practitioners
- All public and private hospital staff
- Healthcare workers in private practice
- Community pharmacy staff
- All workers providing in-home and community disability and aged care, including centre-based care
- Workers who regularly engage in person with those receiving aged care or those with a disability in phase 1a or 1b, including aged care assessment workforce, those conducting regulatory activities and advocacy services
- All health care workers in clinical settings, including students on placement
- Onsite administrative staff in healthcare settings
- Cleaners, kitchen staff and other ancillary staff in healthcare settings

Where

Phase 1b sites
by
appointment

Pfizer hubs if
contacted by
jurisdiction

Requirements

Proof of occupation
(ID card, letter from
employer or
*Eligibility
Declaration Form*)
will be required to
demonstrate
eligibility



Phase 1b: Critical and High Risk Workers

Who	Where	Requirements
<ul style="list-style-type: none">• Emergency services personnel, including frontline police officers, fire and rescue personnel, corrective services officers• Rural Fire Service and State Emergency Service volunteers• Active Australian Defence Force personnel• Australian government officials about to be deployed or currently deployed overseas on official government business• Workers involved in manufacture of AstraZeneca vaccine and distribution/delivery of COVID-19 vaccines• Workers at licensed meat processing businesses	<p>Phase 1b sites by appointment</p> <p>Defence to provide for ADF</p>	<p>Proof of occupation (ID card, letter from employer or <i>Eligibility Declaration Form</i>) will be required to demonstrate eligibility</p>



Phase 1b: Licensed meat processing workers

- Workers directly involved in the manufacturing and distribution process, where the work is in a cold environment and workers are unable to maintain physical distancing requirements

Included	Excluded
Abattoir workers, including attending veterinarians	Retail workers including butcher shops, fishmongers
Workers in boning rooms	Primary production workers, including fishing
Smallgoods manufacturers	Clerical workers
Cold chain transport workforce	
Seafood processing	



Phase 1b: Household contacts of quarantine and border workers

Who

- Household contacts (those living in the same primary residence) of quarantine and border workers, noting the ongoing greatest risk in Australia is in relation to border entry and hotel quarantine.

Where

Phase 1b sites
by appointment

Pfizer hubs if
contacted by
jurisdiction

Requirements

Proof of occupation (ID card, letter from employer or *Eligibility Declaration Form*) from the worker, along with evidence to demonstrate the household contact lives at the same residential address will be required to demonstrate eligibility



Phase 1b: Specified underlying medical conditions[^]

Australia's COVID-19
Vaccine Roadmap

Conditions	Notes
Immunocompromising conditions	
Haematological diseases or cancers	Including leukaemia, lymphoma or myeloma resulting in immunocompromise*
Solid organ transplant recipients who are on immune suppressive therapy*	
Bone marrow transplant OR chimeric antigen receptor T-cell (CAR-T) therapy recipients OR those with graft versus host disease*	
Non-haematological cancers	Diagnosed within the past 5 years OR on chemotherapy, radiotherapy, immunotherapy or targeted anti-cancer therapy (active treatment or recently completed) OR with advanced disease regardless of treatment
Adult survivors of childhood cancers	
Chronic inflammatory conditions requiring medical treatments	Including: Systemic Lupus Erythematosus, Rheumatoid Arthritis, Crohn's disease, ulcerative colitis, and similar who are being treated with Disease modifying anti-rheumatic drugs (DMARDs) or immune-suppressive or immunomodulatory therapies. Generally not inclusive of people living with osteoarthritis, fibromyalgia, myalgic encephalomyelitis/chronic fatigue syndrome or similar non-immunocompromising inflammatory conditions.
Primary or acquired immunodeficiency	Including congenital causes of immunodeficiency and HIV/AIDS

[^] this eligibility criteria applies to people aged 69 years and under

*Recommend discussion with specialist regarding optimal timing of vaccination.



Phase 1b: Specified underlying medical conditions[^]

Conditions	Notes
Other underlying conditions	
Chronic renal (kidney) failure with a eGFR of <44mL/min	Does not include mild-moderate chronic kidney disease
Heart disease	Including Ischaemic heart disease, valvular heart disease, cardiomyopathies and pulmonary hypertension
Chronic lung disease	Including Chronic Obstructive Pulmonary Disease, cystic fibrosis, interstitial lung disease. Does not include Mild or moderate asthma
Diabetes	
Severe obesity with a BMI $\geq 40\text{kg/m}^2$	
Chronic liver disease	
Chronic neurological conditions	Including Stroke, dementia, Multiple sclerosis, motor neurone disease, Parkinson's disease, cerebral palsy. Generally not inclusive of migraine or cluster headaches
Poorly controlled blood pressure (defined as two or more pharmacologic agents for blood pressure control, regardless of recent readings)	
Those living with significant disability requiring frequent assistance with activities of daily living	Including Down Syndrome, muscular dystrophy, traumatic brain and spinal cord injury, severe intellectual disability
Those with severe mental health conditions	Including schizophrenia, bi-polar disorder affecting ability to adhere to public health measures

[^] this eligibility criteria applies to people aged 69 years and under



Phase 1b: Other eligible individuals

Included	Excluded	Where	Requirements
<p>Carers (paid and unpaid) of:</p> <ul style="list-style-type: none"> a resident of an aged care facility or residential disability accommodation who is eligible under phase 1a a person 70 years and over who is eligible under phase 1b a person with a specified underlying medical condition who is eligible under phase 1b a child with a specified underlying medical condition 	<p>Family members of people with disability who are not carers.</p> <p>Carers of people not eligible under Phases 1a or 1b.</p>	<p>Phase 1b sites by appointment or by other arrangement.</p>	<p>Carers documentation or proof of occupation (ID card or letter from employer/centre-based support provider).</p>
<p>Disability and aged care support volunteers who provide support to people in their homes, respite care, educational, employment, leisure and/or residential settings, including those providing transport and advocacy services.</p>			<p>Where none of these are available, including family members or others who provide significant care, individuals may complete an <i>Eligibility Declaration Form</i></p>
<p>People with a disability or with age-related conditions (e.g. early onset dementia) attending centre-based services (e.g. day programs, respite care, supported employment).</p>			



Phase 1b: Proof of eligibility – underlying medical conditions

- For individuals attending their usual GP, the clinic's records may be relied upon as evidence
- MyHealth Record
- A referral from GP or treating specialist
- Alternative medical records, including:
 - a printout of an individual's medical history as recorded in their clinical records;
 - a printout of an individual's chronic disease care plan; a discharge summary from a hospital or other medical facility; or
 - a valid script or medication prescribed to treat one or more of the relevant medical conditions
- Where none of these are available, individuals may complete an *Eligibility Declaration Form*

Proof of eligibility – Obligations for immunisers



- Confirm that proof of eligibility meets one of the accepted types
- Make a record of the form of proof provided
- Eligibility only needs to be assessed for the first dose
 - If an individual has one dose recorded in AIR and required spacing between doses is met, there is no need to again check priority eligibility
- No further assessment is required by providers to assess whether an individual falls in a priority cohort
- The reason for eligibility does not need to be reported

Where will I be vaccinated?

Most individuals in Phase 1B will make an appointment through the COVID Vaccine Information and Location Service or provider's own booking system and attend the clinic to be vaccinated

GPRCs, state vaccination clinics, Aboriginal Community Controlled Health Services and some GPs will commence providing COVID-19 vaccines from Phase 1B

ADF personnel will be vaccinated by Defence

States and Territories will manage vaccination of their healthcare workforce and emergency services personnel



How can I prove I've been vaccinated?

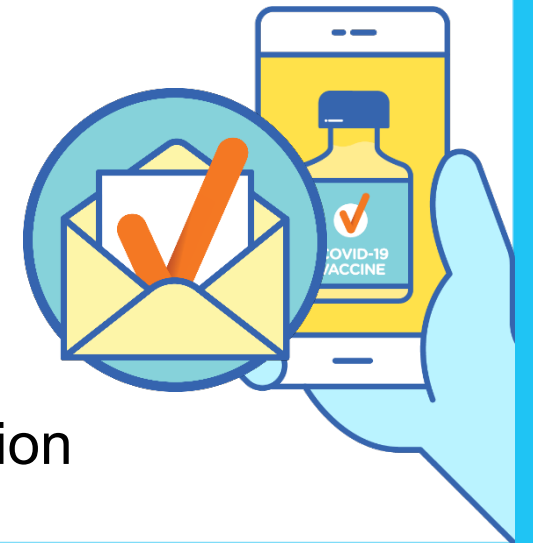
Australians can already access their immunisation history statement through Medicare for proof of vaccination, both digitally and in hard copy, if required.

Statements can be viewed on an individual's Medicare online account or via the Medicare app.

Your immunisation history statement will record your COVID-19 vaccinations, following each dose.

You can ask the vaccine provider or another health professional to print a statement of vaccination.

You can call Services Australia to request a copy of your immunisation history



For more information on TGA's COVID-19 vaccine approval process visit: www.tga.gov.au/covid-19-vaccine-approval-process

For the latest COVID-19 vaccine updates visit: www.health.gov.au/covid19-vaccines

For the latest official coronavirus news, updates and advice from the Australian Government visit: www.australia.gov.au