

COVID-19 Vaccine Rollout

22 March 2021

COVID-19 vaccine national rollout strategy

Phase 1a – up to 1.4m doses Commenced 22 February - ongoing

Quarantine and border workers	70,000
Frontline health care worker sub-groups for prioritisation	100,000
Aged care and disability care staff	318,000
Aged care and disability care residents	190,000
Total	678,000

Phase 1b – up to 14.8m doses

Commenced 22 March - ongoing

Elderly adults aged 80 years and over	1,045,000
Elderly adults aged 70-79 years	1,858,000
Other health care workers	953,000
Aboriginal and Torres Strait Islander people > 55	87,000
Adults with an underlying medical condition or significant disability	2,000,000
Critical and high risk workers including defence, police, fire, emergency services and meat processing	196,000
Total	6,139,000

Phase 2a – up to 15.8m doses

Adults aged 60-69 years	2,650,000
Adults aged 50-59 years	3,080,000
Aboriginal and Torres Strait Islander people 18- 54	387,000
Other critical and high risk workers	453,000
Total	6,570,000

Phase 2b – up to 16m doses

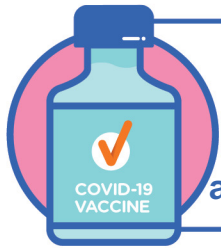
Balance of adult population	6,643,000
<i>Catch up any unvaccinated Australians from previous phases</i>	

Phase 3 – up to 13.6m doses

< 18 if recommended*	5,670,000
----------------------	-----------

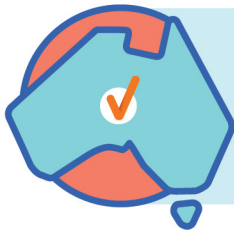
Population numbers are current estimates for each category.
* 16 and 17 year olds will be able to access the Pfizer vaccine in line with the relevant cohort.

Total number of people vaccinated



281,549

Total vaccine doses administered as at 21 March



58,358

Commonwealth vaccine doses in aged and disability facilities



223,191

Total vaccine doses administered in State clinics as a 21 March 2021*



Aged care doses administered



Aged care and residential
disability doses administered

49,348

First doses

9,010

Second doses

Aged care and residential
disability facilities

609

Sites visited for first doses

89

Sites visited for second doses



58,358

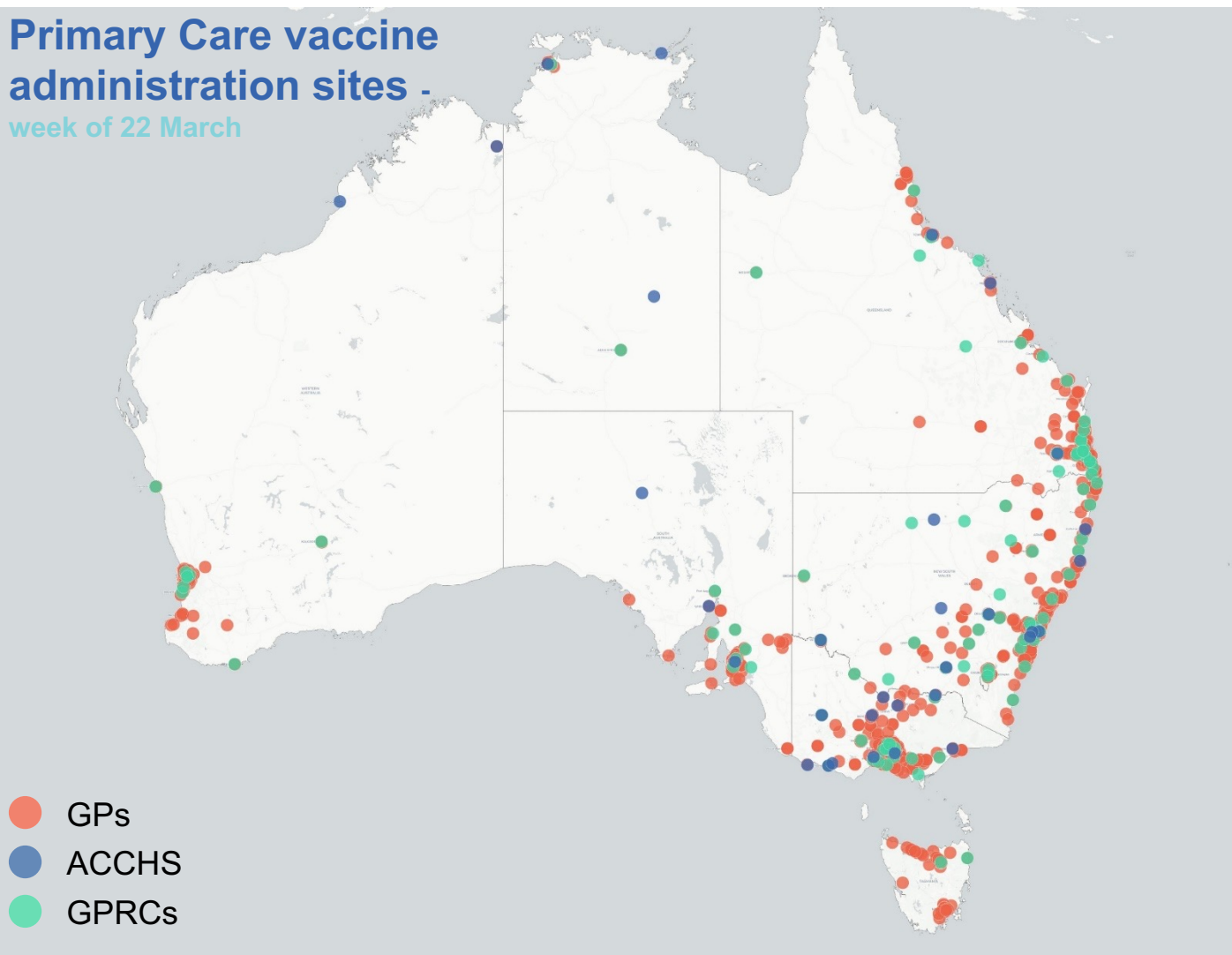
Commonwealth vaccine doses in aged and
disability facilities

Number of aged care residents vaccinated by jurisdiction



COVID-19 vaccine rollout – Phase 1b

Primary Care vaccine administration sites - week of 22 March



Primary Care sites expected to start through the week

subject to flood and weather – the safety of staff and patients is paramount

Over 1000 GP practices

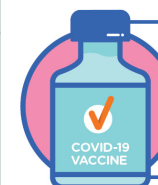
Over 150,000 doses available

Over 100 Commonwealth Vaccination Clinics (GP Respiratory Clinics)

Over 100,000 doses available

Over 30 Aboriginal Community Controlled Health Services

Over 5,000 doses available



215,000+ doses distributed
this week through Primary Care

People eligible to be vaccinated Phase 1b



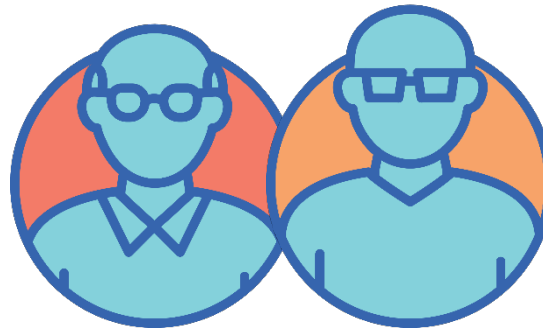
Healthcare workers currently employed and not included in Phase 1a



Household contacts of quarantine and border workers



Critical and high risk workers currently employed



People 80 years and over

People 70 years and over



Aboriginal and Torres Strait Islander people 55 years and over



Adults with an underlying medical condition or significant disability



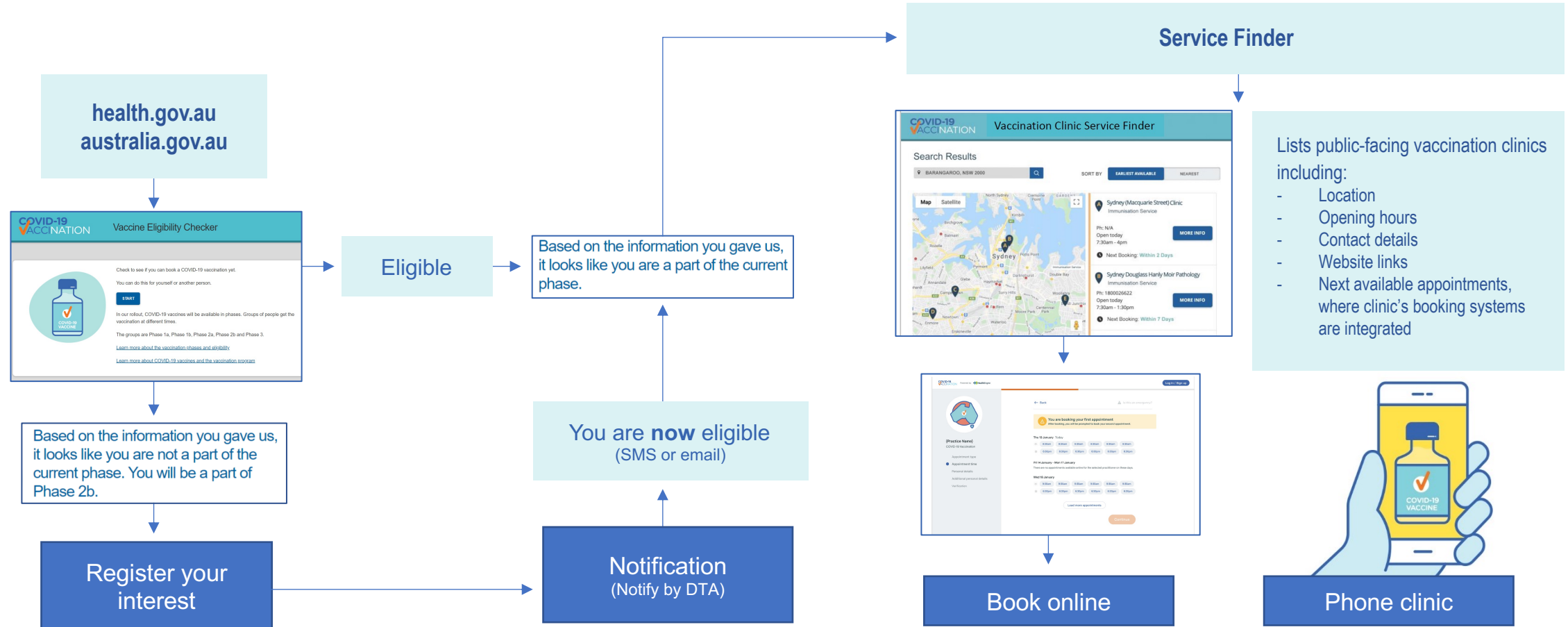
How can I make an appointment?

- ✓ **Book online directly with the practice**
- ✓ **GP may reach out to patients**
- ✓ **Click through via the Vaccine Information and Location Service**
- ✓ **Call the National Coronavirus and COVID-19 Vaccine Helpline
1800 020 080**

With over six million people eligible for vaccination in Phase 1b, your patience is appreciated.

COVID Vaccine Information and Location Service

Check eligibility, find out when you can get a vaccine and where



AstraZeneca

- TGA released a statement on 19 March 2021 reaffirming safety and efficacy of the AstraZeneca vaccine following the European Medicines Agency decision.
- TGA have now approved the CSL manufacturing facility and process in a landmark decision. This clears the way for 50 million doses to be manufactured and distributed throughout Australia.
- Each batch of CSL manufactured AstraZeneca vaccine will need to be individually tested, with the first batches expected to be released in the coming days and then continuously released thereafter.

www.health.gov.au

National Coronavirus and COVID-19 Vaccine
Helpline 1800 020 080