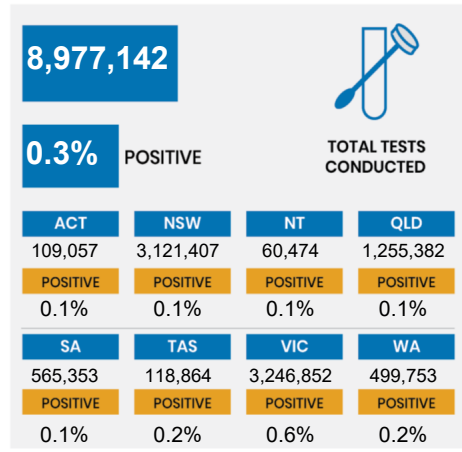
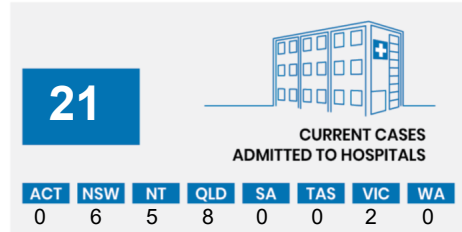
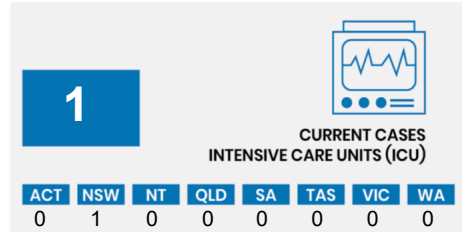
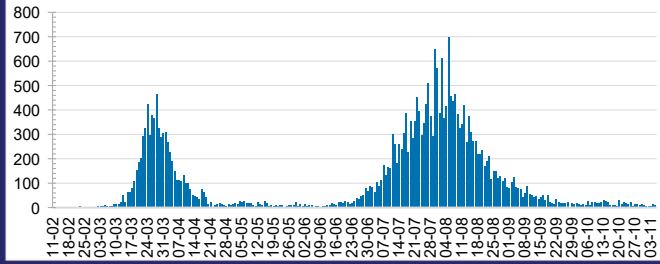




**CURRENT STATUS OF CONFIRMED CASES**



**DAILY NUMBER OF REPORTED CASES**

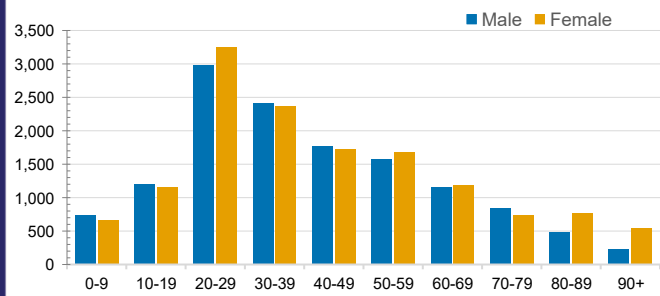


**CASES IN AGED CARE SERVICES**

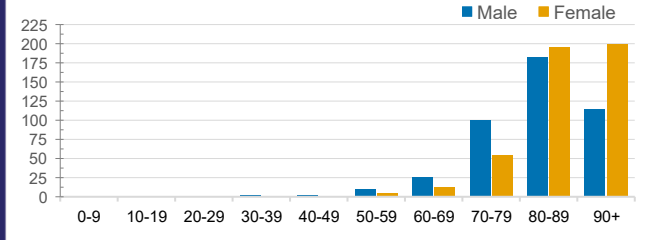
| Confirmed Cases             | Australia         | ACT | NSW          | NT | QLD       | SA        | TAS       | VIC               | WA    |
|-----------------------------|-------------------|-----|--------------|----|-----------|-----------|-----------|-------------------|-------|
| Residential Care Recipients | 2049 [1364] (685) | 0   | 61 [33] (28) | 0  | 1 (1)     | 0         | 1 (1)     | 1986 [1331] (655) | 0     |
| In Home Care Recipients     | 81 [73] (8)       | 0   | 13 [13] (8)  | 0  | 8 [8] (1) | 1 [1] (2) | 5 [3] (5) | 53 [48] (5)       | 1 (1) |

Cases in care recipients [recovered] (deaths)

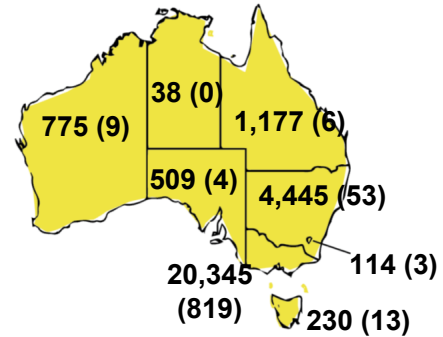
**CASES BY AGE GROUP AND SEX**



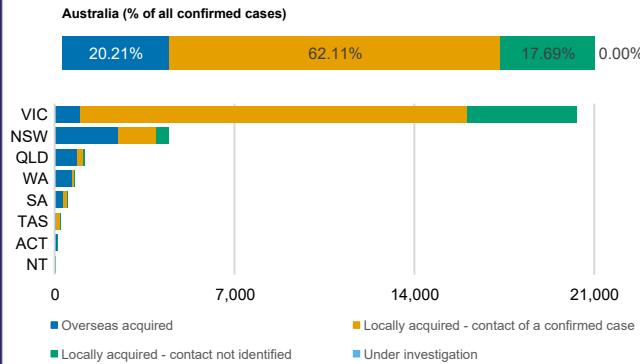
**DEATHS BY AGE GROUP AND SEX**



**CASES (DEATHS) BY STATE AND TERRITORIES**



**CASES BY SOURCE OF INFECTION**



**PUBLIC HEALTH RESPONSE MEASURE**

