



CURRENT STATUS OF CONFIRMED CASES

27,174

Total cases

895

Total deaths

24,775

Cases recovered

5

CURRENT CASES
INTENSIVE CARE UNITS (ICU)

ACT	NSW	NT	QLD	SA	TAS	VIC	WA
0	3	0	1	0	0	1	0

37

CURRENT CASES
ADMITTED TO HOSPITALS

ACT	NSW	NT	QLD	SA	TAS	VIC	WA
0	10	0	6	0	0	21	0

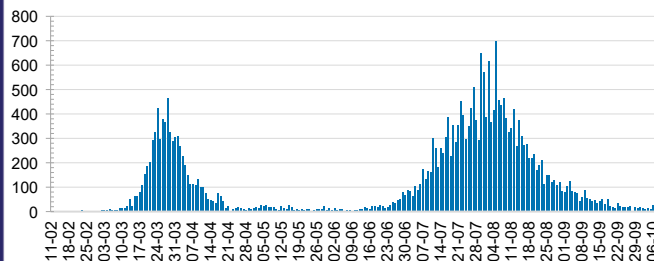
7,819,472

0.3% POSITIVE

TOTAL TESTS
CONDUCTED

ACT	NSW	NT	QLD
96,263	2,751,929	49,696	1,133,933
POSITIVE	POSITIVE	POSITIVE	POSITIVE
0.1%	0.2%	0.1%	0.1%
SA	TAS	VIC	WA
483,142	106,374	2,763,802	434,333
POSITIVE	POSITIVE	POSITIVE	POSITIVE
0.1%	0.2%	0.7%	0.2%

DAILY NUMBER OF REPORTED CASES

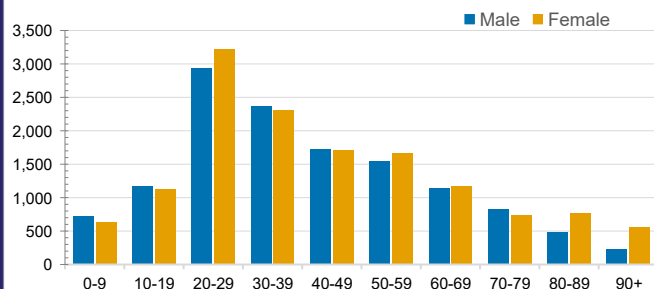


CASES IN AGED CARE SERVICES

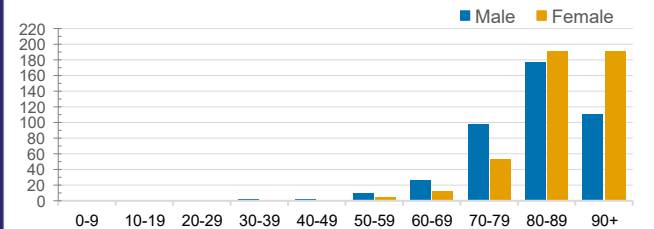
Confirmed Cases	Australia	ACT	NSW	NT	QLD	SA	TAS	VIC	WA
Residential Care Recipients	2050 [1344] (674)	0	61 [33] (28)	0	1 (1)	0	1 (1)	1987 [1311] (644)	0
In Home Care Recipients	82 [72] (7)	0	13 [13] (0)	0	8 [8] (0)	1 [1] (0)	5 [3] (2)	54 [47] (4)	1 (1)

Cases in care recipients [recovered] (deaths)

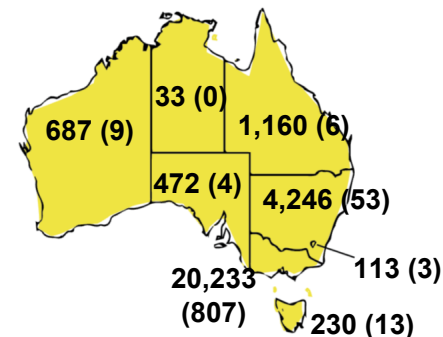
CASES BY AGE GROUP AND SEX



DEATHS BY AGE GROUP AND SEX

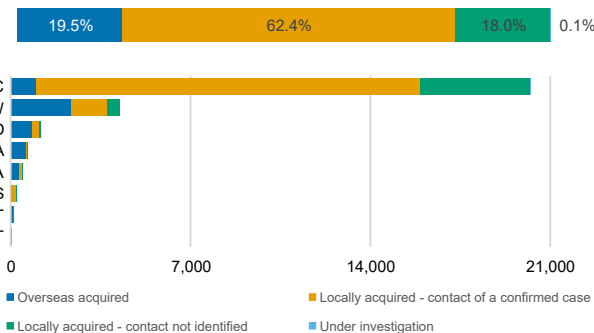


CASES (DEATHS) BY STATE AND TERRITORIES



CASES BY SOURCE OF INFECTION

Australia (% of all confirmed cases)



PUBLIC HEALTH RESPONSE MEASURE

Proportion of total cases under investigation

