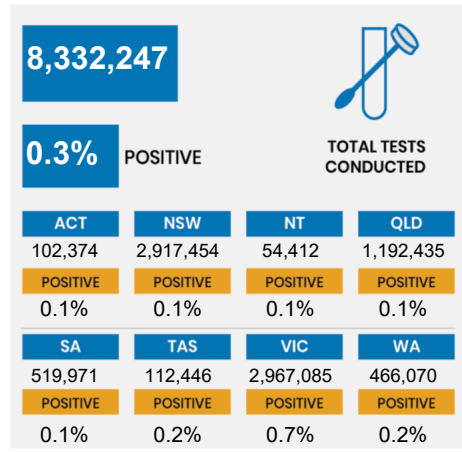
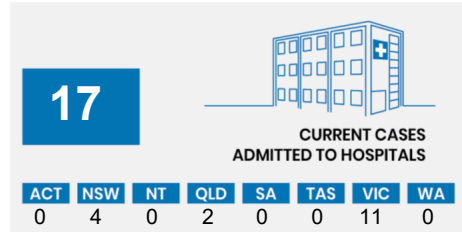
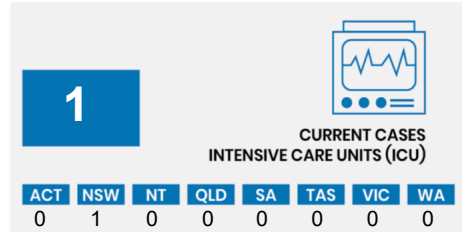
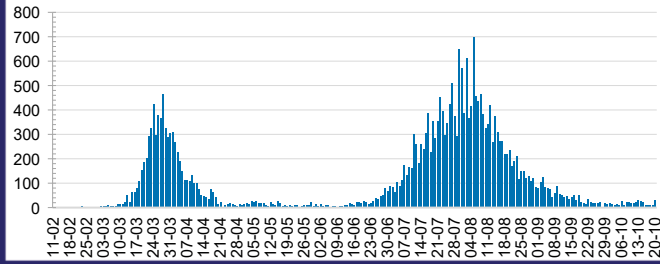




CURRENT STATUS OF CONFIRMED CASES



DAILY NUMBER OF REPORTED CASES

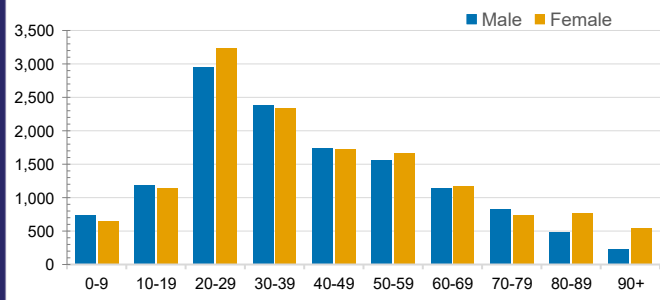


CASES IN AGED CARE SERVICES

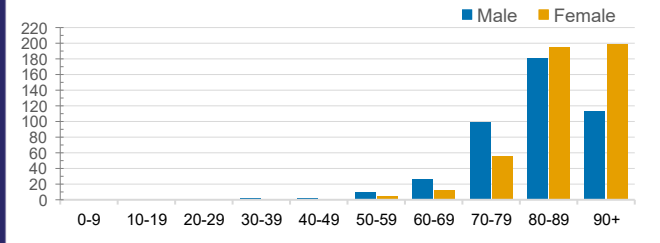
| Confirmed Cases | Australia | ACT | NSW | NT | QLD | SA | TAS | VIC | WA |
|-----------------------------|-------------------|-----|--------------|----|-----------|-----------|-----------|-------------------|-------|
| Residential Care Recipients | 2049 [1364] (683) | 0 | 61 [33] (28) | 0 | 1 (1) | 0 | 1 (1) | 1986 [1331] (653) | 0 |
| In Home Care Recipients | 82 [74] (8) | 0 | 13 [13] (8) | 0 | 8 [8] (1) | 1 [1] (2) | 5 [3] (5) | 54 [49] (5) | 1 (1) |

Cases in care recipients [recovered] (deaths)

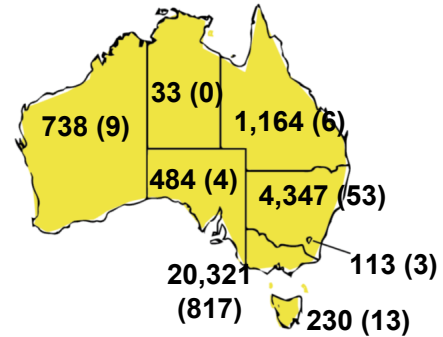
CASES BY AGE GROUP AND SEX



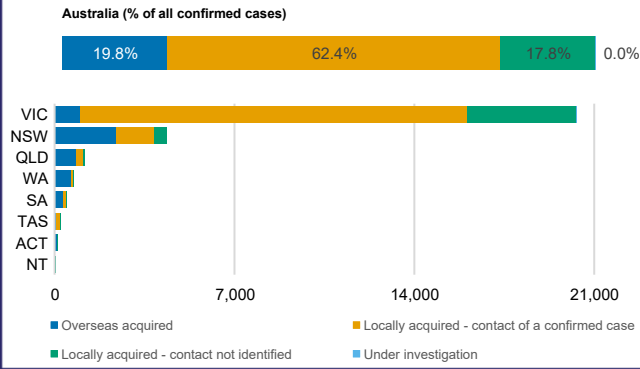
DEATHS BY AGE GROUP AND SEX



CASES (DEATHS) BY STATE AND TERRITORIES



CASES BY SOURCE OF INFECTION



PUBLIC HEALTH RESPONSE MEASURE

