



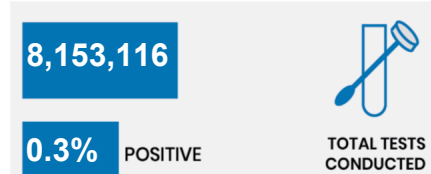
CURRENT STATUS OF CONFIRMED CASES



ACT	NSW	NT	QLD	SA	TAS	VIC	WA
0	1	0	0	0	0	0	0



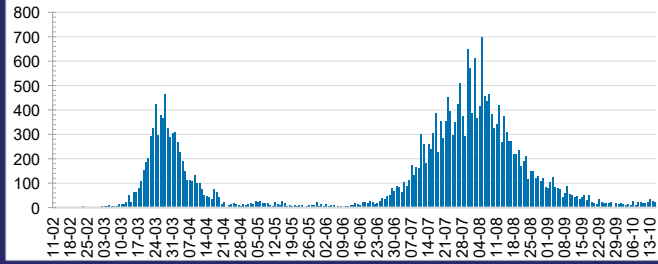
ACT	NSW	NT	QLD	SA	TAS	VIC	WA
0	5	0	1	0	0	21	0



ACT	NSW	NT	QLD
100,515	2,859,347	53,011	1,174,703
POSITIVE	POSITIVE	POSITIVE	POSITIVE
0.1%	0.2%	0.1%	0.1%

SA	TAS	VIC	WA
508,065	110,605	2,890,495	456,375
POSITIVE	POSITIVE	POSITIVE	POSITIVE
0.1%	0.2%	0.7%	0.2%

DAILY NUMBER OF REPORTED CASES

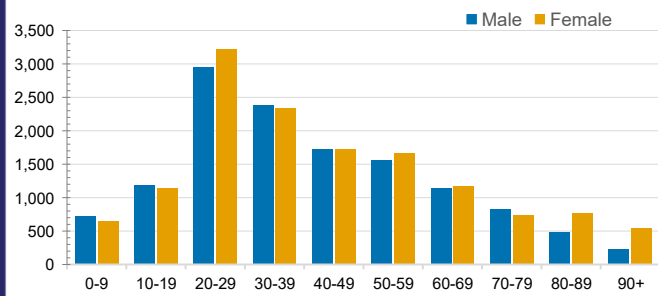


CASES IN AGED CARE SERVICES

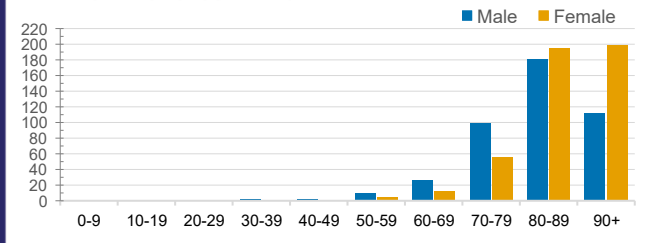
Confirmed Cases	Australia	ACT	NSW	NT	QLD	SA	TAS	VIC	WA
Residential Care Recipients	2050 [1358]	0	61 [33] (28)	0	1 (1)	0	1 (1)	1987 [1325] (652)	0
In Home Care Recipients	82 [74]	0	13 [13]	0	8 [8]	1 [1]	5 [3] (2)	54 [49] (5)	1 (1)

Cases in care recipients [recovered] (deaths)

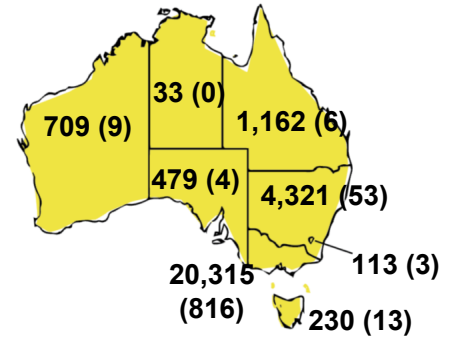
CASES BY AGE GROUP AND SEX



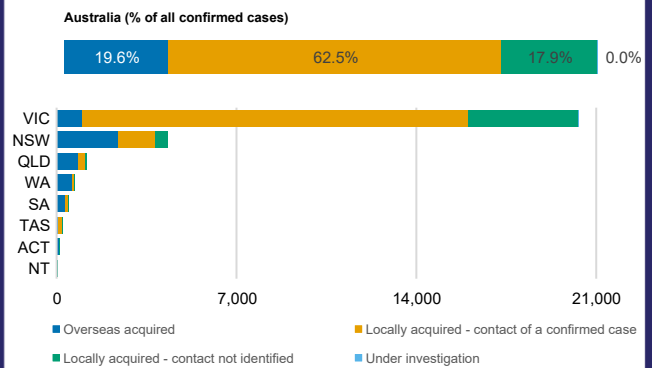
DEATHS BY AGE GROUP AND SEX



CASES (DEATHS) BY STATE AND TERRITORIES



CASES BY SOURCE OF INFECTION



PUBLIC HEALTH RESPONSE MEASURE

