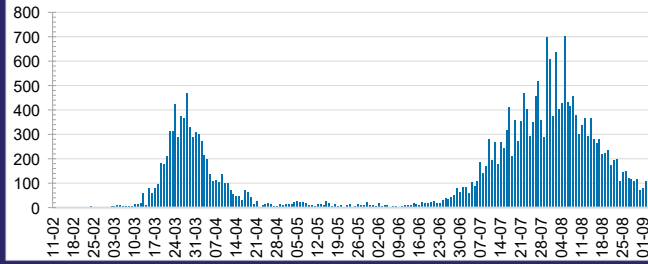




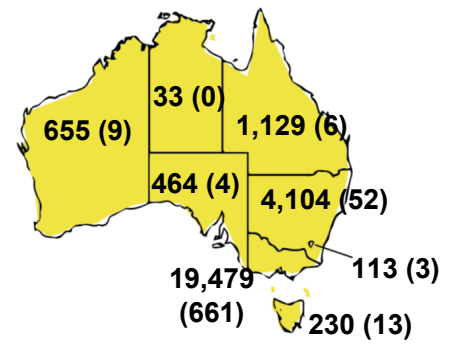
CURRENT STATUS OF CONFIRMED CASES



DAILY NUMBER OF REPORTED CASES



CASES (DEATHS) BY STATE AND TERRITORIES



27



ACT	NSW	NT	QLD	SA	TAS	VIC	WA
0	6	0	0	0	0	21	0

327



ACT	NSW	NT	QLD	SA	TAS	VIC	WA
0	14	0	15	0	0	298	0

6,590,788



0.4% POSITIVE

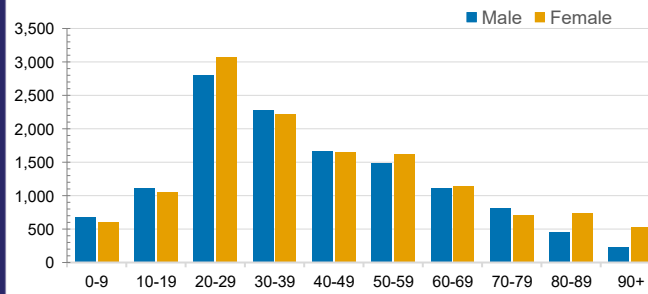
ACT	NSW	NT	QLD
83,237	2,289,500	37,971	960,993
POSITIVE	POSITIVE	POSITIVE	POSITIVE
0.1%	0.2%	0.1%	0.1%
SA	TAS	VIC	WA
397,457	91,187	2,372,112	358,331
POSITIVE	POSITIVE	POSITIVE	POSITIVE
0.1%	0.3%	0.8%	0.2%

CASES IN AGED CARE SERVICES

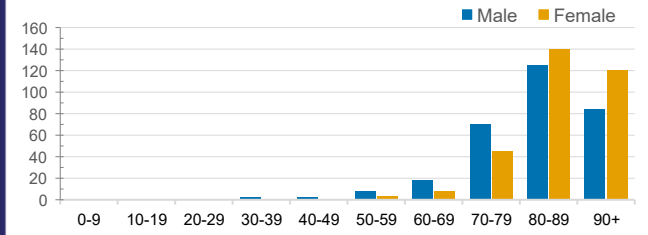
Confirmed Cases	Australia	ACT	NSW	NT	QLD	SA	TAS	VIC	WA
Residential Care Recipients	1939 [709]	0	61 [32]	0	1 (1)	0	1 (1)	1876 [677]	0
In Home Care Recipients	78 [57]	0	13 [13]	0	8 [8]	1 [1]	5 [3]	50 [32]	1 (1)

Cases in care recipients [recovered] (deaths)

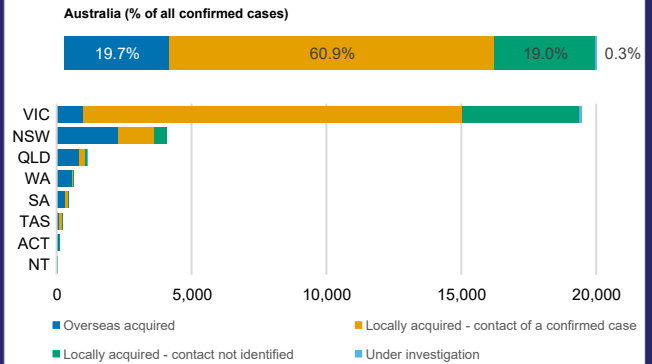
CASES BY AGE GROUP AND SEX



DEATHS BY AGE GROUP AND SEX



CASES BY SOURCE OF INFECTION



PUBLIC HEALTH RESPONSE MEASURE

