



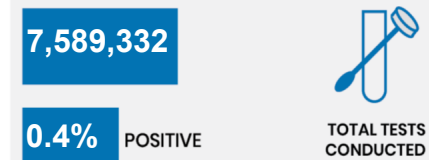
CURRENT STATUS OF CONFIRMED CASES



ACT	NSW	NT	QLD	SA	TAS	VIC	WA
0	3	0	0	0	0	5	0

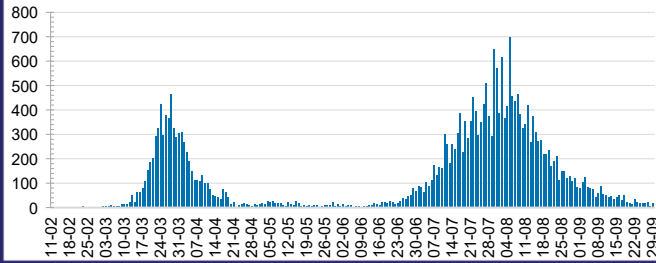


ACT	NSW	NT	QLD	SA	TAS	VIC	WA
0	9	0	5	0	0	46	0



ACT	NSW	NT	QLD
93,811	2,685,126	47,213	1,104,203
POSITIVE	POSITIVE	POSITIVE	POSITIVE
0.1%	0.2%	0.1%	0.1%
SA	TAS	VIC	WA
465,690	102,821	2,677,022	413,446
POSITIVE	POSITIVE	POSITIVE	POSITIVE
0.1%	0.2%	0.8%	0.2%

DAILY NUMBER OF REPORTED CASES

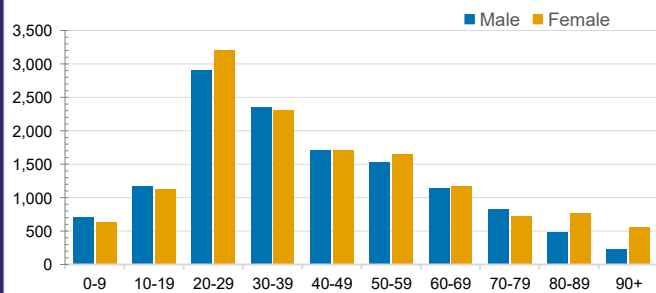


CASES IN AGED CARE SERVICES

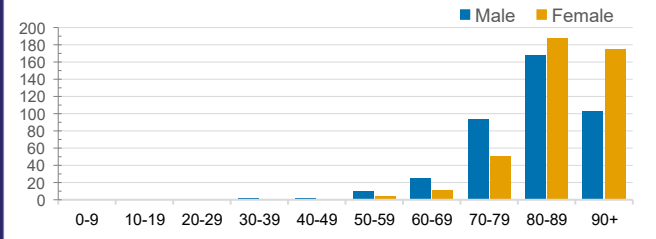
Confirmed Cases	Australia	ACT	NSW	NT	QLD	SA	TAS	VIC	WA
Residential Care Recipients	2049 [1303] (663)	0	61 [33] (28)	0	1 (1)	0	1 (1)	1986 [1270] (633)	0
In Home Care Recipients	82 [72] (7)	0	13 [13] (0)	0	8 [8] (0)	1 [1] (0)	5 [3] (2)	54 [47] (4)	1 (1)

Cases in care recipients [recovered] (deaths)

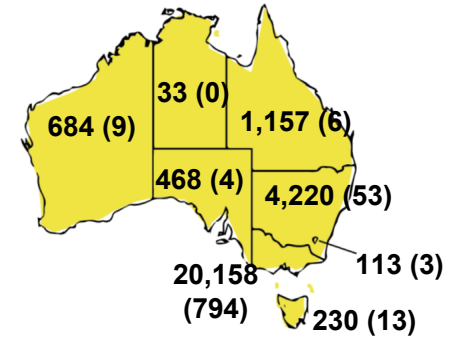
CASES BY AGE GROUP AND SEX



DEATHS BY AGE GROUP AND SEX

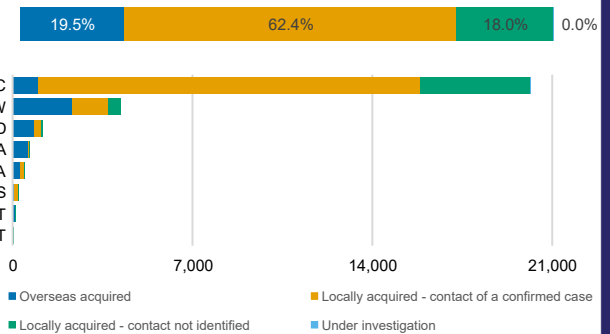


CASES (DEATHS) BY STATE AND TERRITORIES



CASES BY SOURCE OF INFECTION

Australia (% of all confirmed cases)



PUBLIC HEALTH RESPONSE MEASURE

Proportion of total cases under investigation

