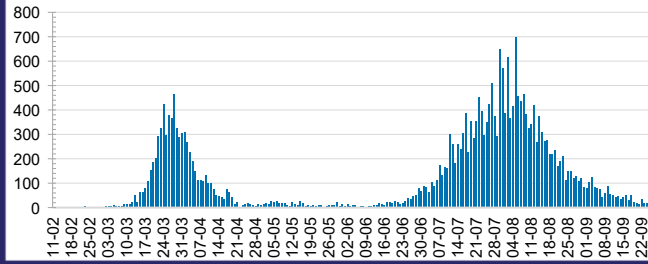




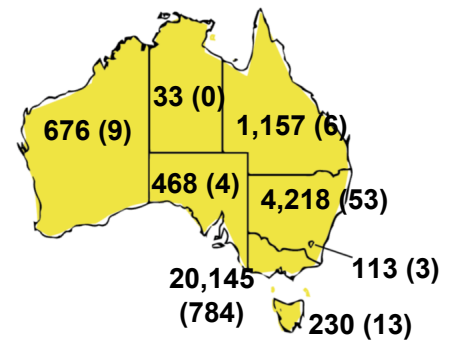
CURRENT STATUS OF CONFIRMED CASES



DAILY NUMBER OF REPORTED CASES



CASES (DEATHS) BY STATE AND TERRITORIES



12



ACT	NSW	NT	QLD	SA	TAS	VIC	WA
0	3	0	0	0	0	9	0

65



ACT	NSW	NT	QLD	SA	TAS	VIC	WA
0	9	0	5	0	0	51	0

7,546,223



ACT	NSW	NT	QLD
93,154	2,672,392	46,478	1,097,964
POSITIVE	POSITIVE	POSITIVE	POSITIVE
0.1%	0.2%	0.1%	0.1%

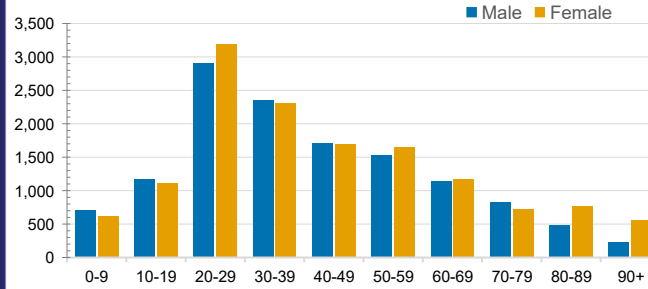
SA	TAS	VIC	WA
461,796	102,279	2,661,989	410,171
POSITIVE	POSITIVE	POSITIVE	POSITIVE
0.1%	0.2%	0.8%	0.2%

CASES IN AGED CARE SERVICES

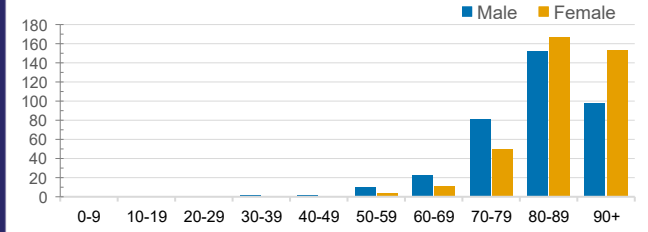
Confirmed Cases	Australia	ACT	NSW	NT	QLD	SA	TAS	VIC	WA
Residential Care Recipients	2049 [1293] (654)	0	61 [33] (28)	0	1 (1)	0	1 (1)	1986 [1260] (624)	0
In Home Care Recipients	82 [72] (7)	0	13 [13] (7)	0	8 [8] (7)	1 [1] (7)	5 [3] (2)	54 [47] (4)	1 (1)

Cases in care recipients [recovered] (deaths)

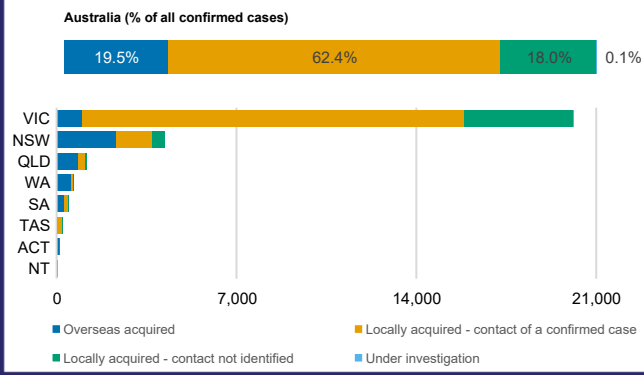
CASES BY AGE GROUP AND SEX



DEATHS BY AGE GROUP AND SEX



CASES BY SOURCE OF INFECTION



PUBLIC HEALTH RESPONSE MEASURE

