



CURRENT STATUS OF CONFIRMED CASES



12

CURRENT CASES
INTENSIVE CARE UNITS (ICU)



ACT	NSW	NT	QLD	SA	TAS	VIC	WA
0	3	0	0	0	0	9	0

68

CURRENT CASES
ADMITTED TO HOSPITALS



ACT	NSW	NT	QLD	SA	TAS	VIC	WA
0	9	0	5	0	0	53	1

7,517,520

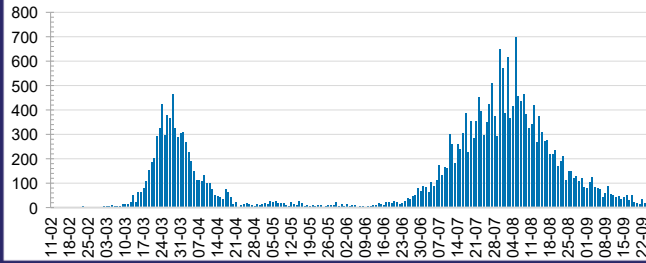
0.4% POSITIVE

TOTAL TESTS
CONDUCTED



ACT	NSW	NT	QLD
92,871	2,660,159	46,313	1,094,924
POSITIVE	POSITIVE	POSITIVE	POSITIVE
0.1%	0.2%	0.1%	0.1%
SA	TAS	VIC	WA
459,829	101,944	2,651,309	410,171
POSITIVE	POSITIVE	POSITIVE	POSITIVE
0.1%	0.2%	0.8%	0.2%

DAILY NUMBER OF REPORTED CASES

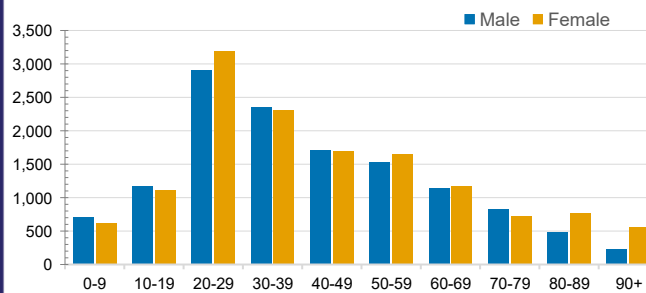


CASES IN AGED CARE SERVICES

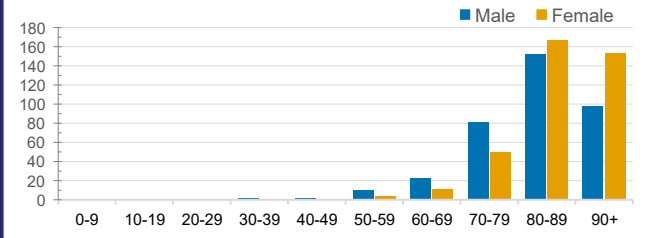
Confirmed Cases	Australia	ACT	NSW	NT	QLD	SA	TAS	VIC	WA
Residential Care Recipients	2049 [1268] (653)	0	61 [33] (28)	0	1 (1)	0	1 (1)	1986 [1235] (623)	0
In Home Care Recipients	82 [72] (7)	0	13 [13] (7)	0	8 [8] (7)	1 [1] (1)	5 [3] (2)	54 [47] (4)	1 (1)

Cases in care recipients [recovered] (deaths)

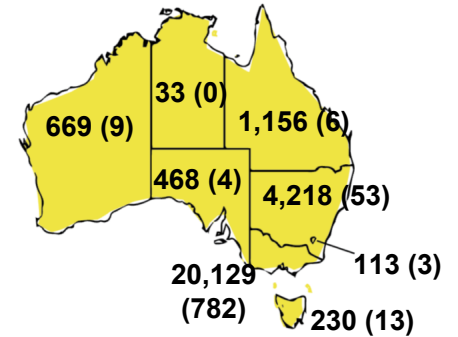
CASES BY AGE GROUP AND SEX



DEATHS BY AGE GROUP AND SEX

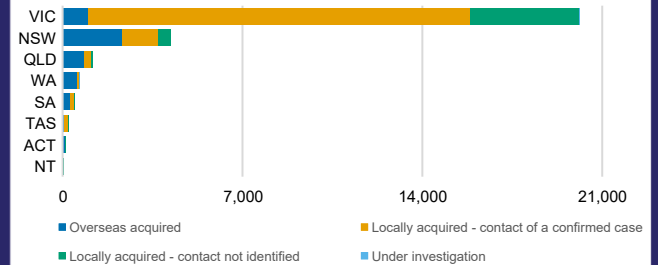
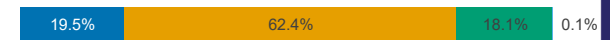


CASES (DEATHS) BY STATE AND TERRITORIES



CASES BY SOURCE OF INFECTION

Australia (% of all confirmed cases)



PUBLIC HEALTH RESPONSE MEASURE

Proportion of total cases under investigation

