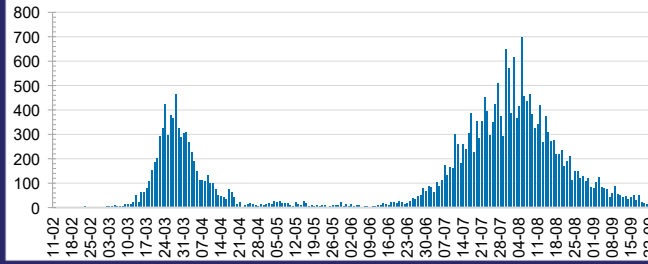




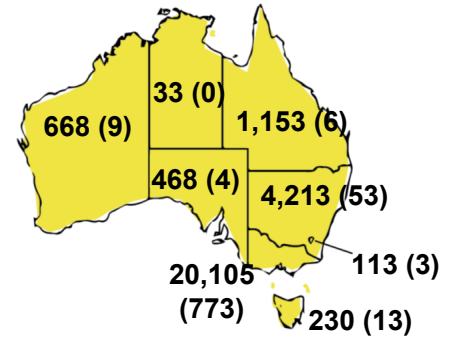
**CURRENT STATUS OF CONFIRMED CASES**



**DAILY NUMBER OF REPORTED CASES**



**CASES (DEATHS) BY STATE AND TERRITORIES**



**10**



ACT	NSW	NT	QLD	SA	TAS	VIC	WA
0	2	0	0	0	0	8	0

**79**



ACT	NSW	NT	QLD	SA	TAS	VIC	WA
0	9	0	2	0	0	67	1

**7,441,327**



**0.4% POSITIVE**

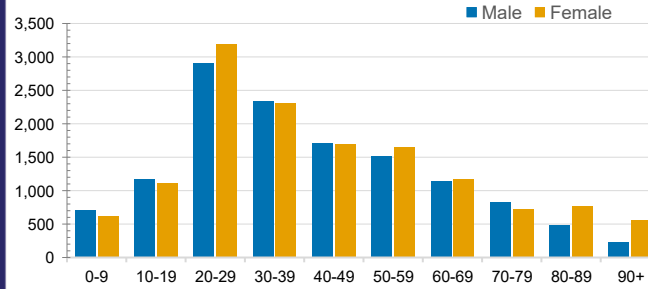
ACT	NSW	NT	QLD
92,035	2,634,215	45,561	1,084,841
POSITIVE	POSITIVE	POSITIVE	POSITIVE
0.1%	0.2%	0.1%	0.1%
SA	TAS	VIC	WA
453,530	101,016	2,622,822	407,307
POSITIVE	POSITIVE	POSITIVE	POSITIVE
0.1%	0.2%	0.8%	0.2%

**CASES IN AGED CARE SERVICES**

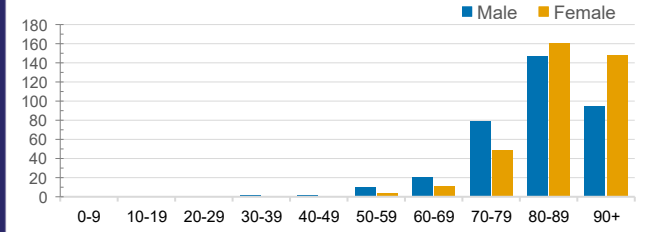
Confirmed Cases	Australia	ACT	NSW	NT	QLD	SA	TAS	VIC	WA
Residential Care Recipients	2047 [1243]	0	61 [33] (28)	0	1 (1)	0	1 (1)	1984 [1210] (614)	0
In Home Care Recipients	82 [72]	0	13 [13]	0	8 [8]	1 [1]	5 [3] (2)	54 [47] (4)	1 (1)

Cases in care recipients [recovered] (deaths)

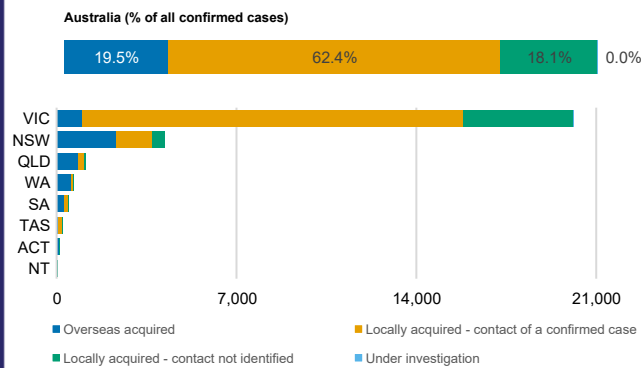
**CASES BY AGE GROUP AND SEX**



**DEATHS BY AGE GROUP AND SEX**



**CASES BY SOURCE OF INFECTION**



**PUBLIC HEALTH RESPONSE MEASURE**

