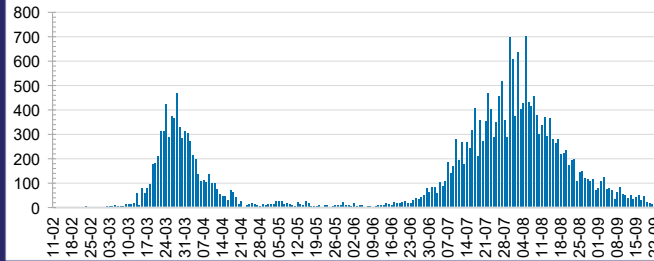




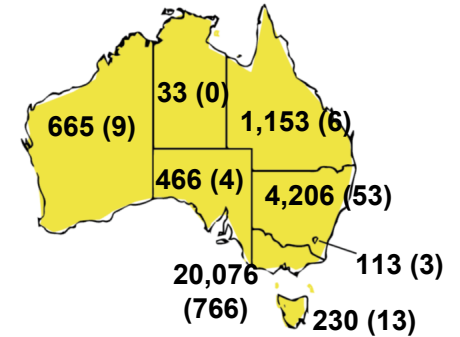
CURRENT STATUS OF CONFIRMED CASES



DAILY NUMBER OF REPORTED CASES



CASES (DEATHS) BY STATE AND TERRITORIES



11

CURRENT CASES
INTENSIVE CARE UNITS (ICU)

ACT	NSW	NT	QLD	SA	TAS	VIC	WA
0	3	0	0	0	0	8	0

100

CURRENT CASES
ADMITTED TO HOSPITALS

ACT	NSW	NT	QLD	SA	TAS	VIC	WA
0	12	0	4	0	0	83	1

7,351,283

0.4% POSITIVE

TOTAL TESTS
CONDUCTED

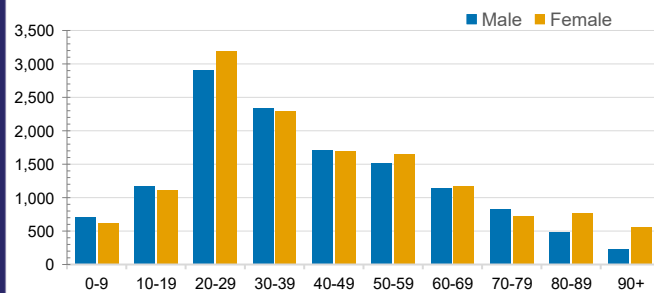
ACT	NSW	NT	QLD
90,782	2,600,064	44,460	1,072,684
POSITIVE	POSITIVE	POSITIVE	POSITIVE
0.1%	0.2%	0.1%	0.1%
SA	TAS	VIC	WA
447,220	99,662	2,593,744	402,667
POSITIVE	POSITIVE	POSITIVE	POSITIVE
0.1%	0.2%	0.8%	0.2%

CASES IN AGED CARE SERVICES

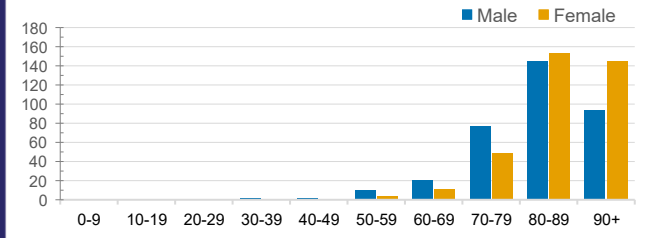
Confirmed Cases	Australia	ACT	NSW	NT	QLD	SA	TAS	VIC	WA
Residential Care Recipients	2047 [1197] (637)	0	61 [33] (28)	0	1 (1)	0	1 (1)	1984 [1164] (607)	0
In Home Care Recipients	82 [71] (7)	0	13 [13] (7)	0	8 [8] (7)	1 [1] (1)	5 [3] (2)	54 [46] (4)	1 (1)

Cases in care recipients [recovered] (deaths)

CASES BY AGE GROUP AND SEX

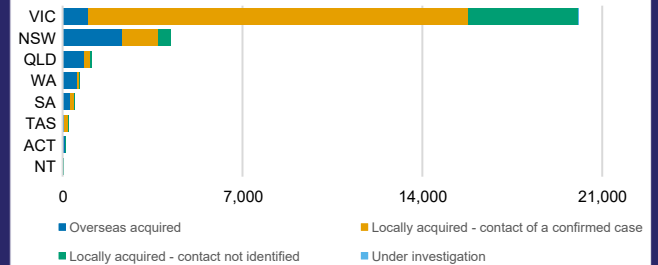
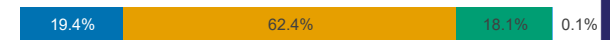


DEATHS BY AGE GROUP AND SEX



CASES BY SOURCE OF INFECTION

Australia (% of all confirmed cases)



PUBLIC HEALTH RESPONSE MEASURE

Proportion of total cases under investigation

