



**CURRENT STATUS OF CONFIRMED CASES**



**10**

CURRENT CASES  
INTENSIVE CARE UNITS (ICU)



ACT	NSW	NT	QLD	SA	TAS	VIC	WA
0	2	0	0	0	0	8	0

**109**

CURRENT CASES  
ADMITTED TO HOSPITALS



ACT	NSW	NT	QLD	SA	TAS	VIC	WA
0	11	0	4	0	0	94	0

**7,296,252**

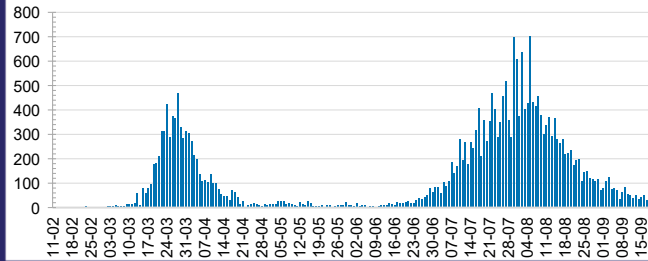
**0.4%** POSITIVE

TOTAL TESTS  
CONDUCTED



ACT	NSW	NT	QLD
89,963	2,584,683	43,758	1,065,078
POSITIVE	POSITIVE	POSITIVE	POSITIVE
0.1%	0.2%	0.1%	0.1%
SA	TAS	VIC	WA
443,097	98,814	2,575,457	395,402
POSITIVE	POSITIVE	POSITIVE	POSITIVE
0.1%	0.2%	0.8%	0.2%

**DAILY NUMBER OF REPORTED CASES**

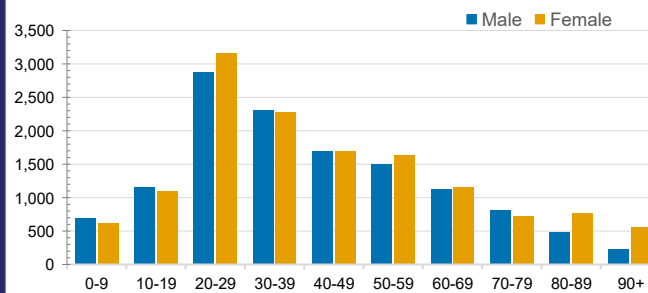


**CASES IN AGED CARE SERVICES**

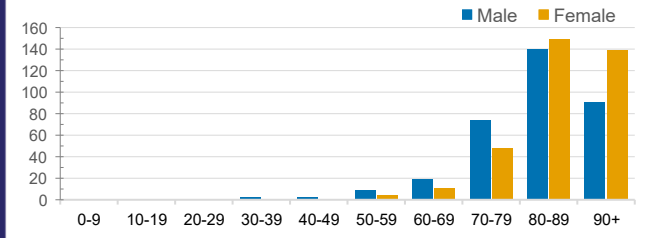
Confirmed Cases	Australia	ACT	NSW	NT	QLD	SA	TAS	VIC	WA
Residential Care Recipients	2041 [1170] (633)	0	61 [33] (28)	0	1 (1)	0	1 (1)	1978 [1137] (603)	0
In Home Care Recipients	82 [71] (7)	0	13 [13] (7)	0	8 [8] (7)	1 [1] (1)	5 [3] (2)	54 [46] (4)	1 (1)

Cases in care recipients [recovered] (deaths)

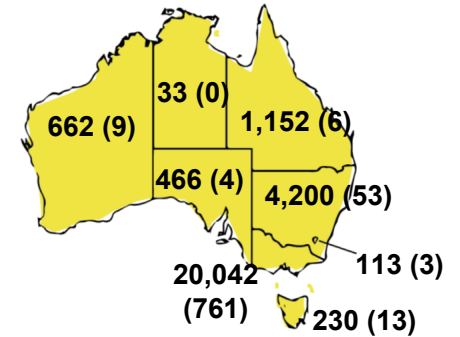
**CASES BY AGE GROUP AND SEX**



**DEATHS BY AGE GROUP AND SEX**

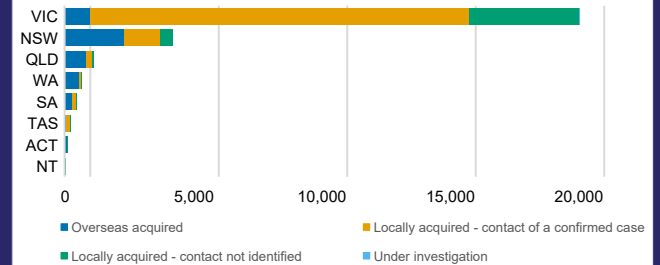
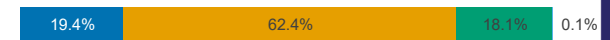


**CASES (DEATHS) BY STATE AND TERRITORIES**



**CASES BY SOURCE OF INFECTION**

Australia (% of all confirmed cases)



**PUBLIC HEALTH RESPONSE MEASURE**

Proportion of total cases under investigation

