



CURRENT STATUS OF CONFIRMED CASES

26,885

Total cases

844

Total deaths

23,957

Cases recovered

12

CURRENT CASES
INTENSIVE CARE UNITS (ICU)

ACT	NSW	NT	QLD	SA	TAS	VIC	WA
0	4	0	0	0	0	8	0

106

CURRENT CASES
ADMITTED TO HOSPITALS

ACT	NSW	NT	QLD	SA	TAS	VIC	WA
0	12	0	5	0	0	89	0

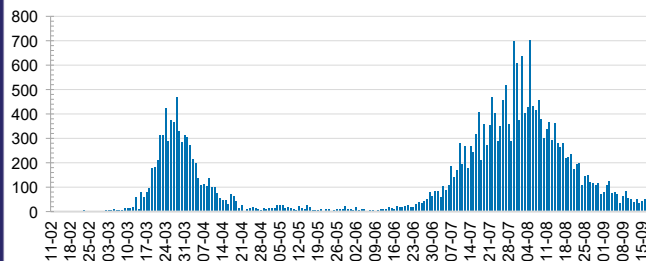
7,263,213

0.4% POSITIVE

TOTAL TESTS
CONDUCTED

ACT	NSW	NT	QLD
89,668	2,571,048	43,514	1,061,380
POSITIVE	POSITIVE	POSITIVE	POSITIVE
0.1%	0.2%	0.1%	0.1%
SA	TAS	VIC	WA
440,672	98,533	2,562,996	395,402
POSITIVE	POSITIVE	POSITIVE	POSITIVE
0.1%	0.2%	0.8%	0.2%

DAILY NUMBER OF REPORTED CASES

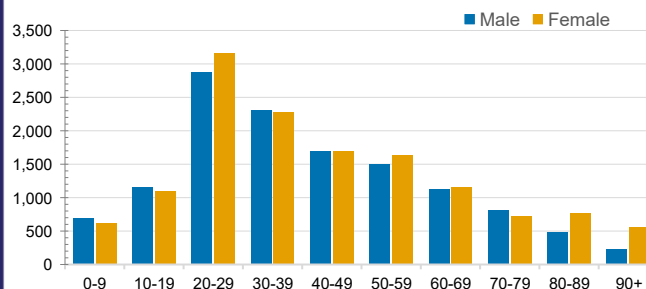


CASES IN AGED CARE SERVICES

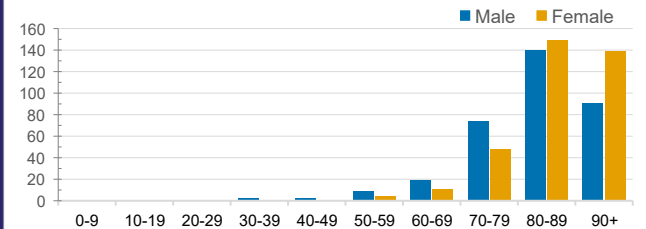
Confirmed Cases	Australia	ACT	NSW	NT	QLD	SA	TAS	VIC	WA
Residential Care Recipients	2041 [1126] (629)	0	61 [33] (28)	0	1 (1)	0	1 (1)	1978 [1093] (599)	0
In Home Care Recipients	82 [71] (7)	0	13 [13] (0)	0	8 [8] (0)	1 [1] (0)	5 [3] (2)	54 [46] (4)	1 (1)

Cases in care recipients [recovered] (deaths)

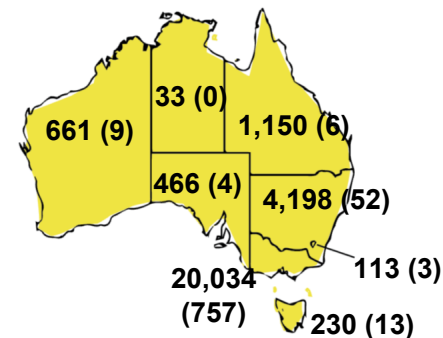
CASES BY AGE GROUP AND SEX



DEATHS BY AGE GROUP AND SEX

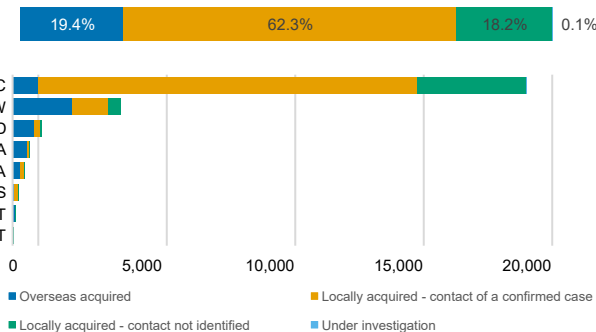


CASES (DEATHS) BY STATE AND TERRITORIES



CASES BY SOURCE OF INFECTION

Australia (% of all confirmed cases)



PUBLIC HEALTH RESPONSE MEASURE

Proportion of total cases under investigation

