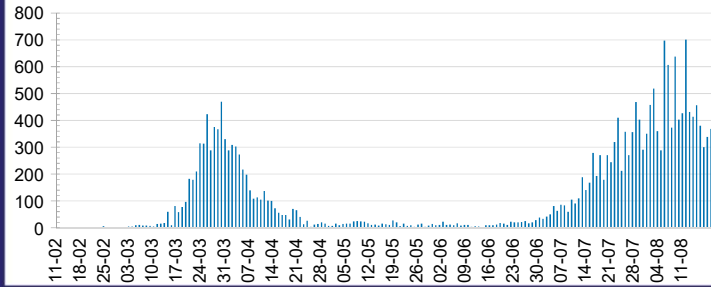




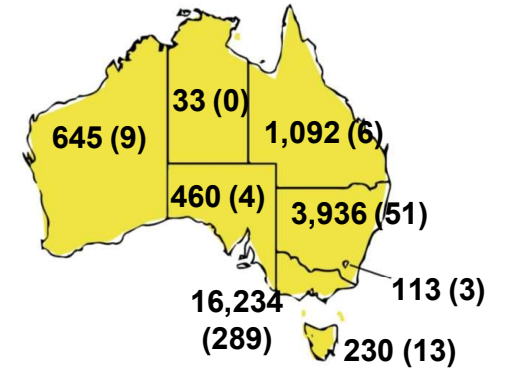
CURRENT STATUS OF CONFIRMED CASES



DAILY NUMBER OF REPORTED CASES



CASES (DEATHS) BY STATE AND TERRITORIES



47

CURRENT CASES
INTENSIVE CARE UNITS (ICU)



ACT	NSW	NT	QLD	SA	TAS	VIC	WA
0	6	0	0	0	0	41	0

680

CURRENT CASES
ADMITTED TO HOSPITALS



ACT	NSW	NT	QLD	SA	TAS	VIC	WA
0	14	2	4	0	1	659	0

5,180,414

TOTAL TESTS
CONDUCTED



0.4% POSITIVE

ACT	NSW	NT	QLD
63,631	1,781,499	29,883	716,420
POSITIVE	POSITIVE	POSITIVE	POSITIVE
0.2%	0.2%	0.1%	0.2%

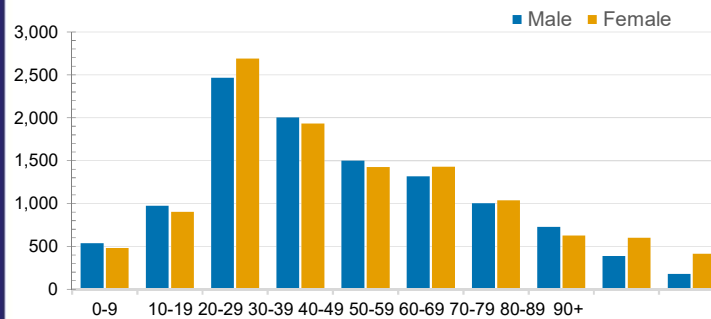
SA	TAS	VIC	WA
311,863	77,576	1,914,474	285,068
POSITIVE	POSITIVE	POSITIVE	POSITIVE
0.1%	0.3%	0.8%	0.2%

CASES IN AGED CARE SERVICES

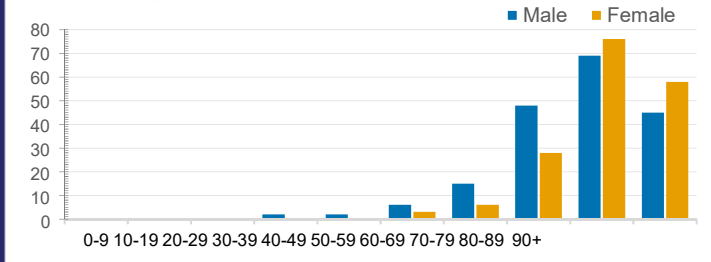
Confirmed Cases	Australia	ACT	NSW	NT	QLD	SA	TAS	VIC	WA
Residential Care Recipients	1408 [49] (215)	0	61 [32] (29)	0	1 (1)	0	1 (1)	1345 [17] (184)	0
In Home Care Recipients	69 [32] (7)	0	13 [13]	0	8 [8]	1 [1]	5 [3] (2)	41 [7] (4)	1 (1)

Cases in care recipients [recovered] (deaths)

CASES BY AGE GROUP AND SEX

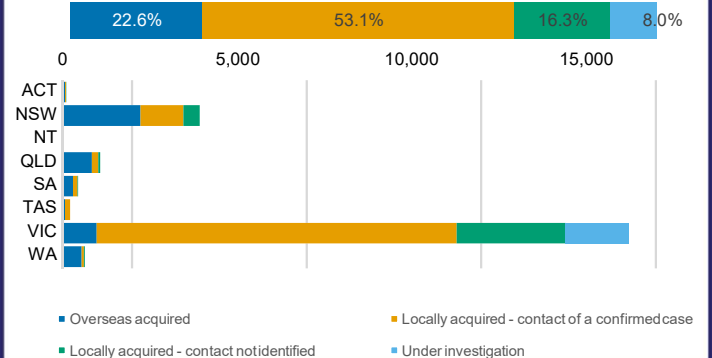


DEATHS BY AGE GROUP AND SEX



CASES BY SOURCE OF INFECTION

Australia (% of all confirmed cases)



PUBLIC HEALTH RESPONSE MEASURE

Proportion of total cases under investigation

