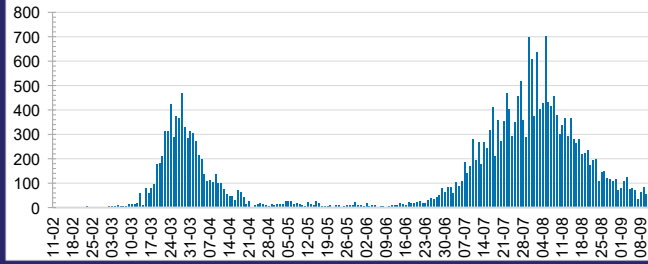




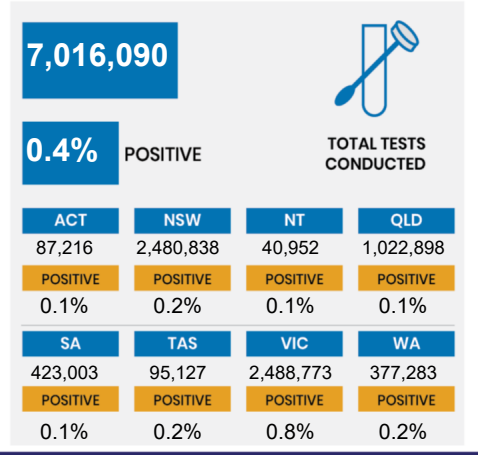
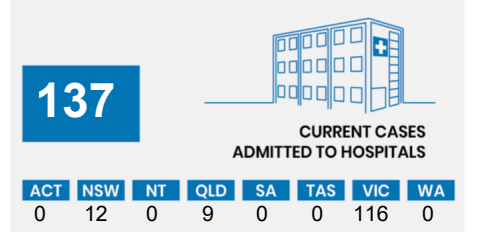
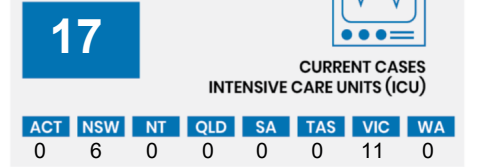
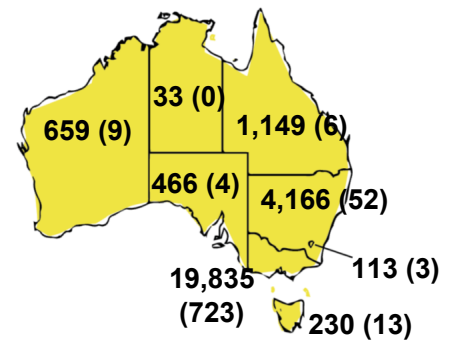
**CURRENT STATUS OF CONFIRMED CASES**



**DAILY NUMBER OF REPORTED CASES**



**CASES (DEATHS) BY STATE AND TERRITORIES**

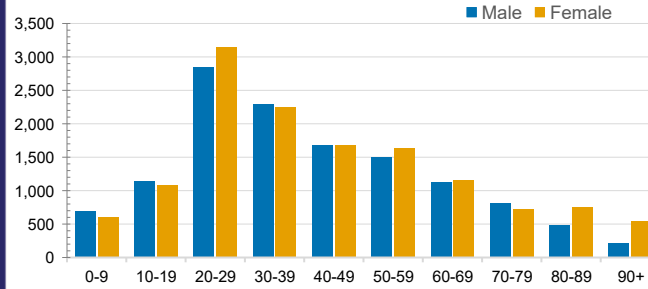


**CASES IN AGED CARE SERVICES**

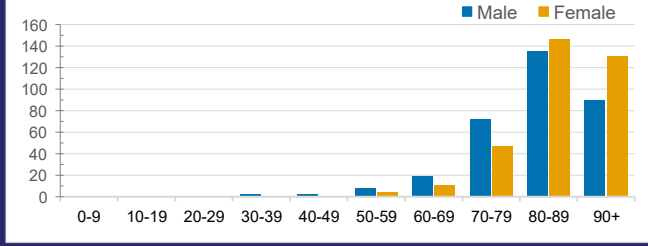
Confirmed Cases	Australia	ACT	NSW	NT	QLD	SA	TAS	VIC	WA
Residential Care Recipients	1997 [1004 (599)]	0	61 [33 (28)]	0	1 (1)	0	1 (1)	1934 [971 (569)]	0
In Home Care Recipients	82 [66 (7)]	0	13 [13]	0	8 [8]	1 [1]	5 [3 (2)]	54 [41 (4)]	1 (1)

Cases in care recipients [recovered] (deaths)

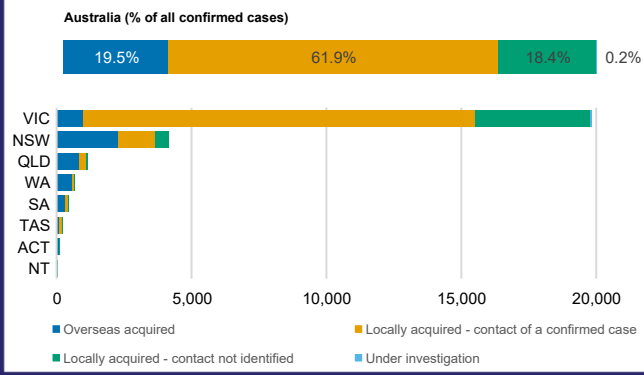
**CASES BY AGE GROUP AND SEX**



**DEATHS BY AGE GROUP AND SEX**



**CASES BY SOURCE OF INFECTION**



**PUBLIC HEALTH RESPONSE MEASURE**

