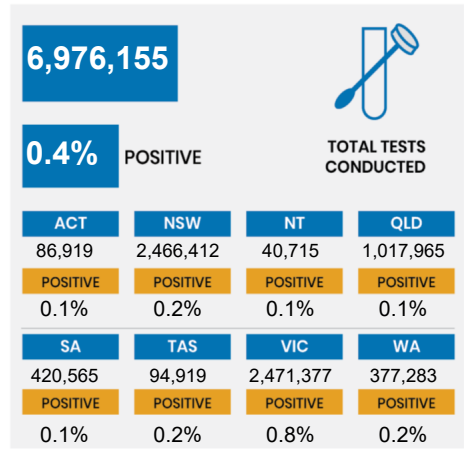
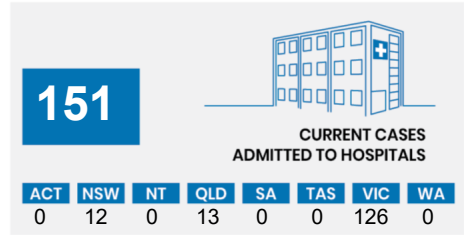
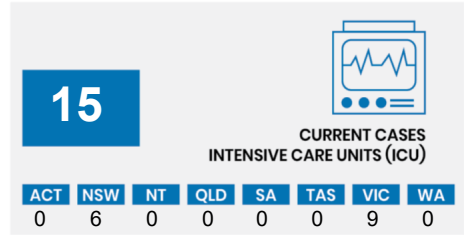
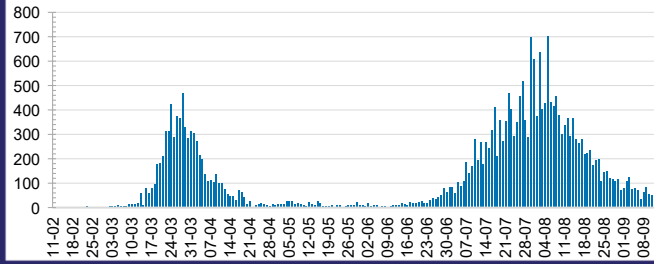




CURRENT STATUS OF CONFIRMED CASES



DAILY NUMBER OF REPORTED CASES

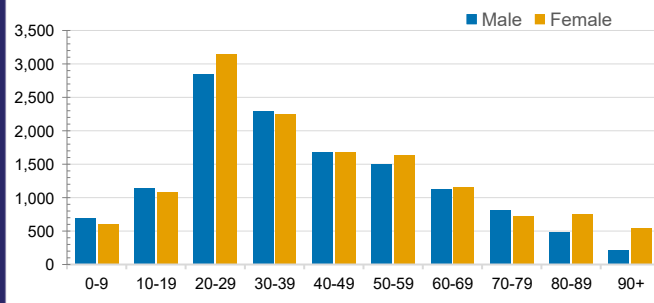


CASES IN AGED CARE SERVICES

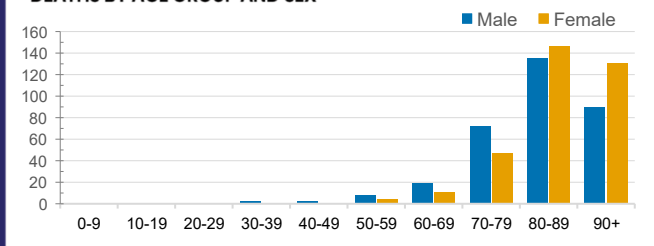
Confirmed Cases	Australia	ACT	NSW	NT	QLD	SA	TAS	VIC	WA
Residential Care Recipients	1992 [961 (593)]	0	61 [33 (28)]	0	1 (1)	0	1 (1)	1929 [928 (563)]	0
In Home Care Recipients	82 [66 (7)]	0	13 [13]	0	8 [8]	1 [1]	5 [3 (2)]	54 [41 (4)]	1 (1)

Cases in care recipients [recovered] (deaths)

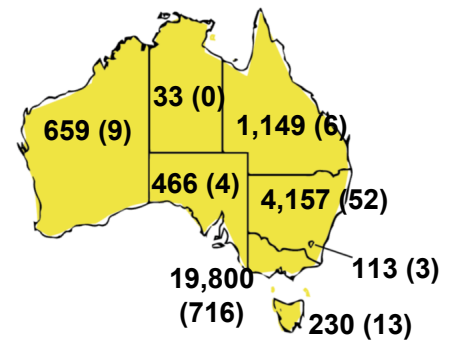
CASES BY AGE GROUP AND SEX



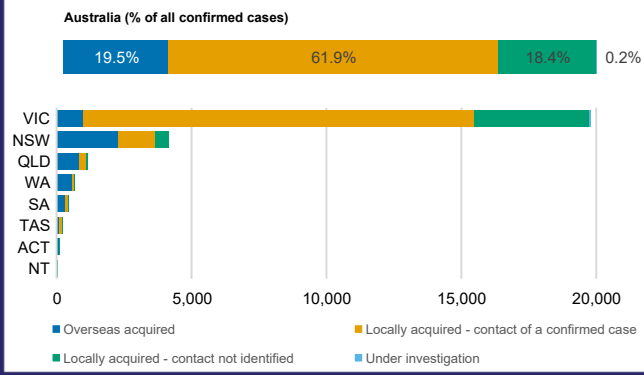
DEATHS BY AGE GROUP AND SEX



CASES (DEATHS) BY STATE AND TERRITORIES



CASES BY SOURCE OF INFECTION



PUBLIC HEALTH RESPONSE MEASURE

