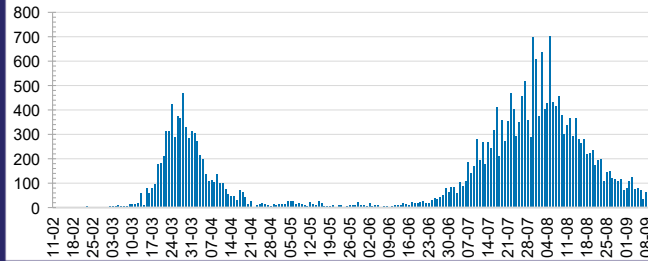




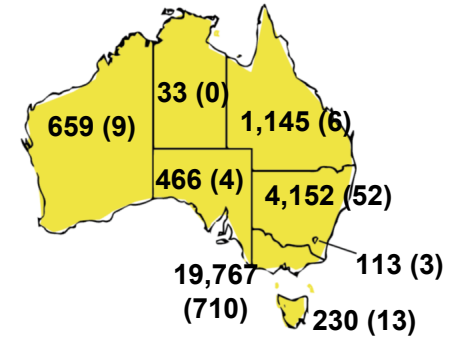
**CURRENT STATUS OF CONFIRMED CASES**



**DAILY NUMBER OF REPORTED CASES**



**CASES (DEATHS) BY STATE AND TERRITORIES**



**18**

CURRENT CASES  
INTENSIVE CARE UNITS (ICU)



ACT	NSW	NT	QLD	SA	TAS	VIC	WA
0	6	0	0	0	0	12	0

**162**

CURRENT CASES  
ADMITTED TO HOSPITALS



ACT	NSW	NT	QLD	SA	TAS	VIC	WA
0	12	0	10	0	0	140	0

**6,928,153**

**0.4%** POSITIVE

TOTAL TESTS  
CONDUCTED



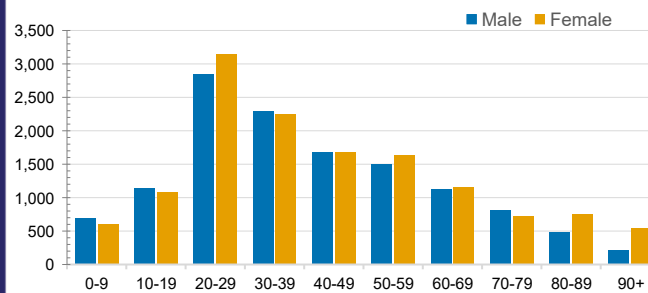
ACT	NSW	NT	QLD
86,352	2,446,201	40,153	1,010,300
POSITIVE	POSITIVE	POSITIVE	POSITIVE
0.1%	0.2%	0.1%	0.1%
SA	TAS	VIC	WA
416,649	94,291	2,456,924	377,283
POSITIVE	POSITIVE	POSITIVE	POSITIVE
0.1%	0.2%	0.8%	0.2%

**CASES IN AGED CARE SERVICES**

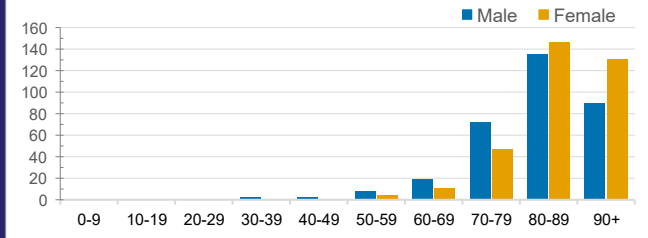
Confirmed Cases	Australia	ACT	NSW	NT	QLD	SA	TAS	VIC	WA
Residential Care Recipients	1989 [947] (588)	0	61 [32] (29)	0	1 (1)	0	1 (1)	1926 [915] (557)	0
In Home Care Recipients	82 [65] (7)	0	13 [13] (0)	0	8 [8] (0)	1 [1] (0)	5 [3] (2)	54 [40] (4)	1 (1)

Cases in care recipients [recovered] (deaths)

**CASES BY AGE GROUP AND SEX**

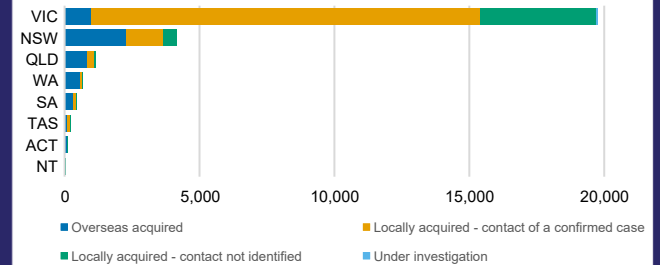
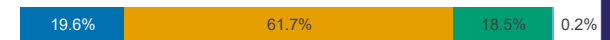


**DEATHS BY AGE GROUP AND SEX**



**CASES BY SOURCE OF INFECTION**

Australia (% of all confirmed cases)



**PUBLIC HEALTH RESPONSE MEASURE**

Proportion of total cases under investigation

