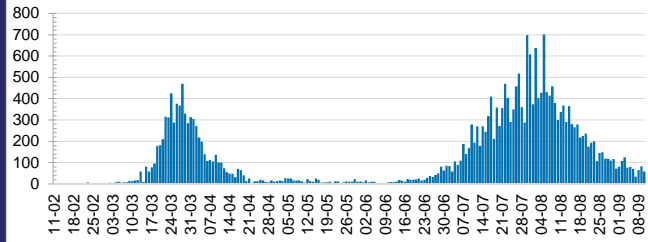




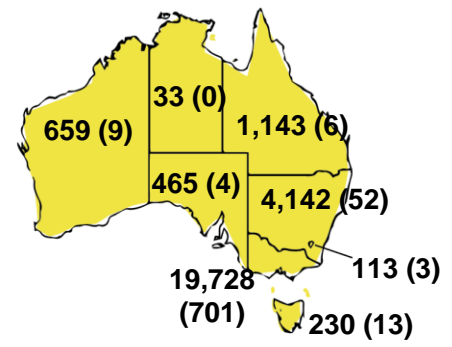
**CURRENT STATUS OF CONFIRMED CASES**



**DAILY NUMBER OF REPORTED CASES**



**CASES (DEATHS) BY STATE AND TERRITORIES**



**23**



| ACT | NSW | NT | QLD | SA | TAS | VIC | WA |
|-----|-----|----|-----|----|-----|-----|----|
| 0   | 6   | 0  | 0   | 0  | 0   | 17  | 0  |

**195**



| ACT | NSW | NT | QLD | SA | TAS | VIC | WA |
|-----|-----|----|-----|----|-----|-----|----|
| 0   | 15  | 0  | 10  | 0  | 0   | 169 | 1  |

**6,849,431**



**0.4% POSITIVE**

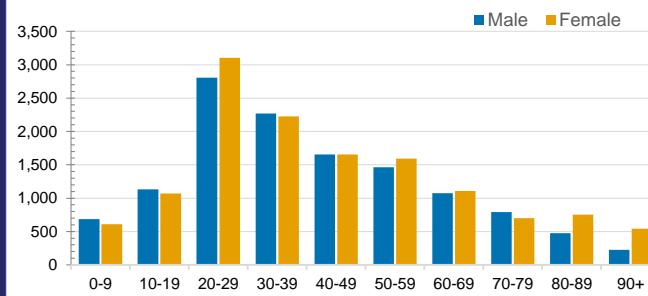
| ACT      | NSW       | NT        | QLD       |
|----------|-----------|-----------|-----------|
| 85,780   | 2,396,261 | 39,769    | 1,001,084 |
| POSITIVE | POSITIVE  | POSITIVE  | POSITIVE  |
| 0.1%     | 0.2%      | 0.1%      | 0.1%      |
| SA       | TAS       | VIC       | WA        |
| 413,372  | 93,672    | 2,443,583 | 375,910   |
| POSITIVE | POSITIVE  | POSITIVE  | POSITIVE  |
| 0.1%     | 0.2%      | 0.8%      | 0.2%      |

**CASES IN AGED CARE SERVICES**

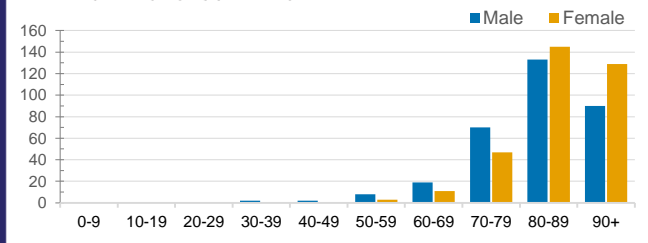
| Confirmed Cases             | Australia  | ACT | NSW          | NT | QLD   | SA    | TAS       | VIC              | WA    |
|-----------------------------|------------|-----|--------------|----|-------|-------|-----------|------------------|-------|
| Residential Care Recipients | 1983 [876] | 0   | 61 [32] (29) | 0  | 1 (1) | 0     | 1 (1)     | 1920 [844] (550) | 0     |
| In Home Care Recipients     | 82 [62]    | 0   | 13 [13]      | 0  | 8 [8] | 1 [1] | 5 [3] (2) | 54 [37] (4)      | 1 (1) |

Cases in care recipients [recovered] (deaths)

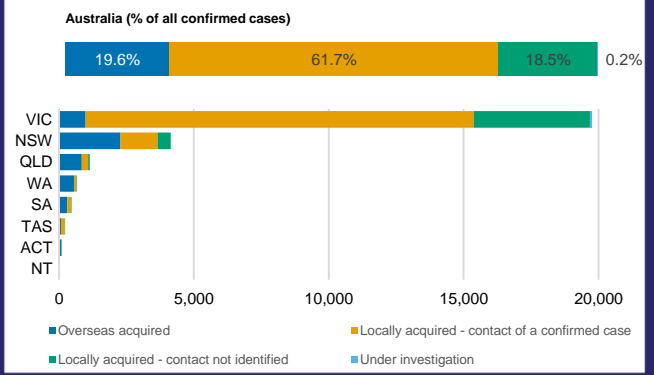
**CASES BY AGE GROUP AND SEX**



**DEATHS BY AGE GROUP AND SEX**



**CASES BY SOURCE OF INFECTION**



**PUBLIC HEALTH RESPONSE MEASURE**

