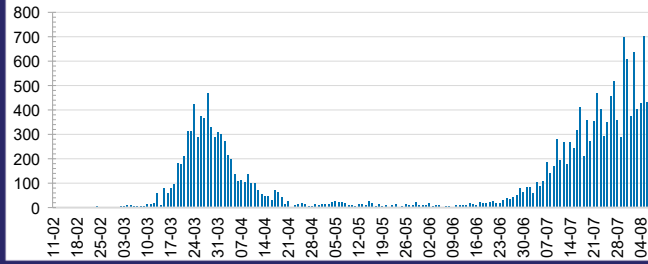




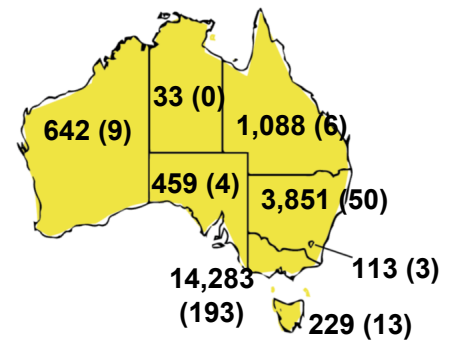
**CURRENT STATUS OF CONFIRMED CASES**



**DAILY NUMBER OF REPORTED CASES**



**CASES (DEATHS) BY STATE AND TERRITORIES**



**53**



ACT	NSW	NT	QLD	SA	TAS	VIC	WA
0	9	0	0	0	0	44	0

**659**



ACT	NSW	NT	QLD	SA	TAS	VIC	WA
0	15	3	4	1	0	636	0

**4,764,223**



**0.4%** POSITIVE

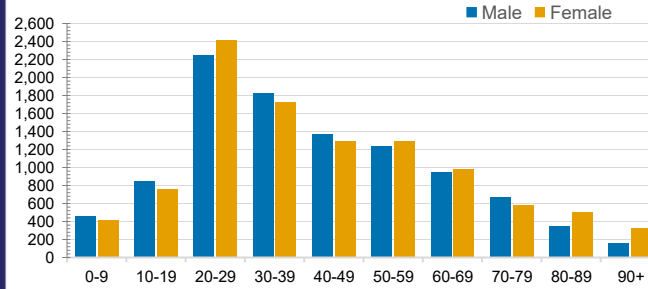
ACT	NSW	NT	QLD
56,723	1,642,220	27,618	656,876
POSITIVE	POSITIVE	POSITIVE	POSITIVE
0.2%	0.2%	0.1%	0.2%
SA	TAS	VIC	WA
278,180	73,895	1,759,969	268,742
POSITIVE	POSITIVE	POSITIVE	POSITIVE
0.2%	0.3%	0.8%	0.2%

**CASES IN AGED CARE SERVICES**

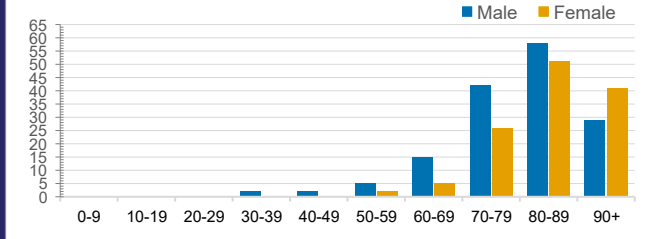
Confirmed Cases	Australia	ACT	NSW	NT	QLD	SA	TAS	VIC	WA
Residential Care Recipients	1180 [48] (199)	0	61 [32] (29)	0	1 (1)	0	1 (1)	1117 [16] (168)	0
In Home Care Recipients	69 [32] (7)	0	13 [13]	0	8 [8]	1 [1]	5 [3] (2)	41 [7] (4)	1 (1)

Cases in care recipients [recovered] (deaths)

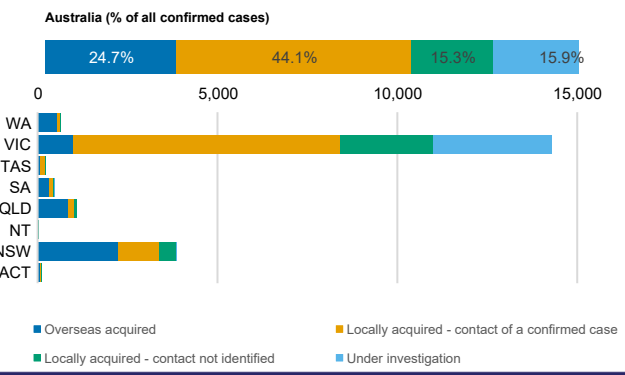
**CASES BY AGE GROUP AND SEX**



**DEATHS BY AGE GROUP AND SEX**



**CASES BY SOURCE OF INFECTION**



**PUBLIC HEALTH RESPONSE MEASURE**

