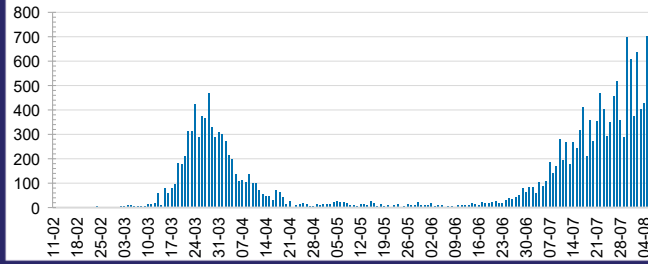




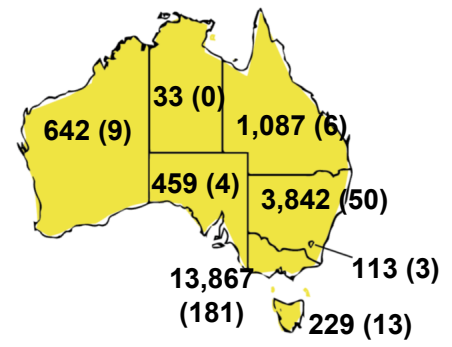
CURRENT STATUS OF CONFIRMED CASES



DAILY NUMBER OF REPORTED CASES



CASES (DEATHS) BY STATE AND TERRITORIES



51



ACT	NSW	NT	QLD	SA	TAS	VIC	WA
0	10	0	0	0	0	41	0

632



ACT	NSW	NT	QLD	SA	TAS	VIC	WA
0	15	3	6	1	0	607	0

4,724,026



0.4% POSITIVE

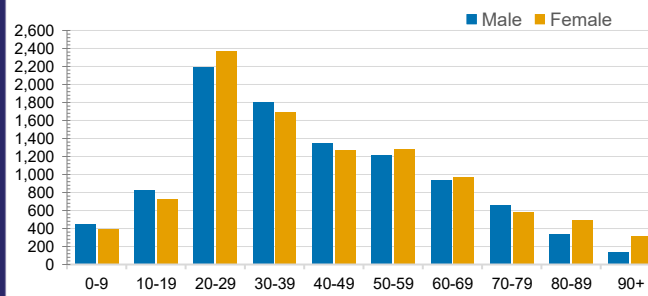
ACT	NSW	NT	QLD
56,219	1,617,799	27,125	638,011
POSITIVE	POSITIVE	POSITIVE	POSITIVE
0.2%	0.2%	0.1%	0.2%
SA	TAS	VIC	WA
270,926	73,251	1,771,953	268,742
POSITIVE	POSITIVE	POSITIVE	POSITIVE
0.2%	0.3%	0.8%	0.2%

CASES IN AGED CARE SERVICES

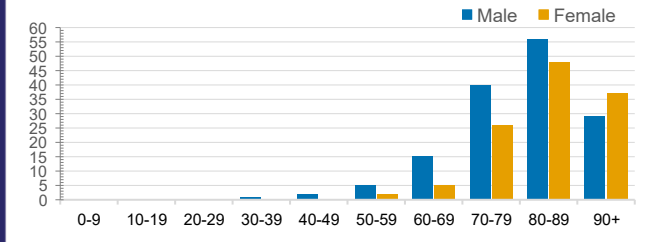
Confirmed Cases	Australia	ACT	NSW	NT	QLD	SA	TAS	VIC	WA
Residential Care Recipients	1135 [48]	0	61 [32]	0	1 (1)	0	1 (1)	1072 [16]	0
In Home Care Recipients	65 [32]	0	13 [13]	0	8 [8]	1 [1]	5 [3]	37 [7]	1 (1)

Cases in care recipients [recovered] (deaths)

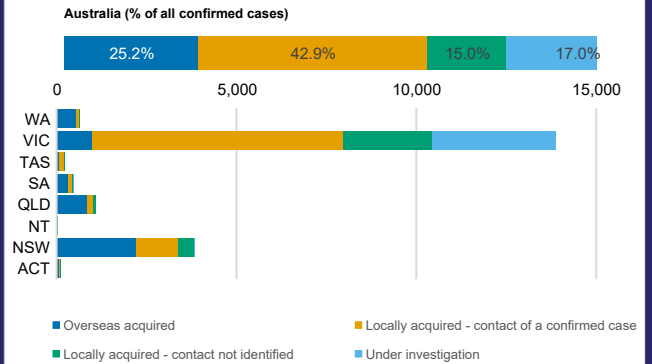
CASES BY AGE GROUP AND SEX



DEATHS BY AGE GROUP AND SEX



CASES BY SOURCE OF INFECTION



PUBLIC HEALTH RESPONSE MEASURE

