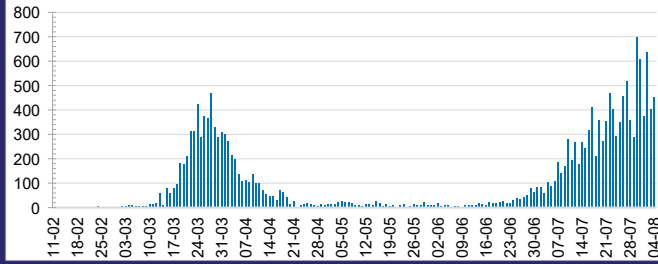




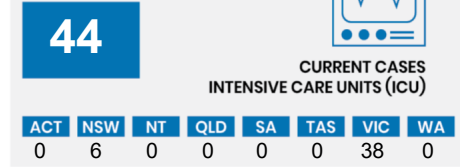
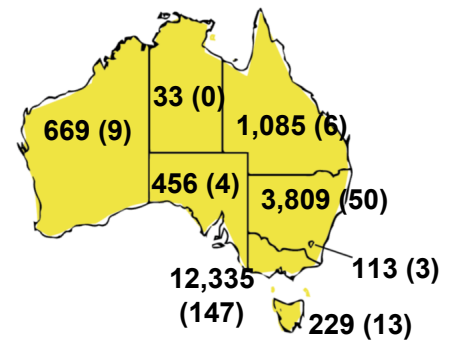
**CURRENT STATUS OF CONFIRMED CASES**



**DAILY NUMBER OF REPORTED CASES**



**CASES (DEATHS) BY STATE AND TERRITORIES**

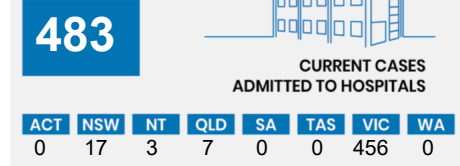
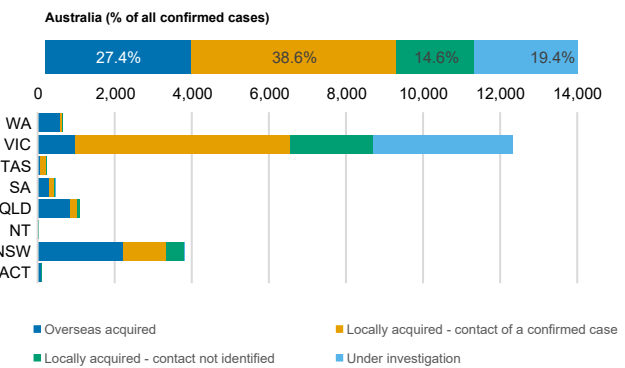


**CASES IN AGED CARE SERVICES**

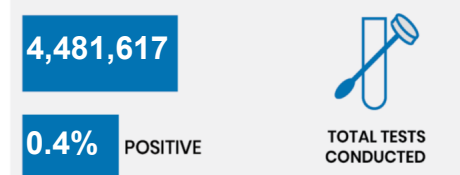
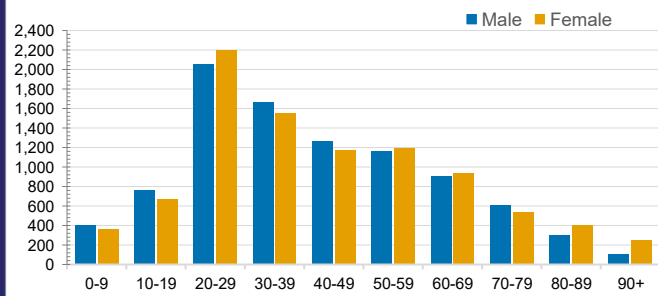
Confirmed Cases	Australia	ACT	NSW	NT	QLD	SA	TAS	VIC	WA
Residential Care Recipients	953 (45)	0	61 (32)	0	1 (1)	0	1 (1)	890 (13)	0
In Home Care Recipients	55 (32)	0	13 (13)	0	8 (8)	1 (1)	5 (3)	27 (7)	1 (1)

Cases in care recipients [recovered] (deaths)

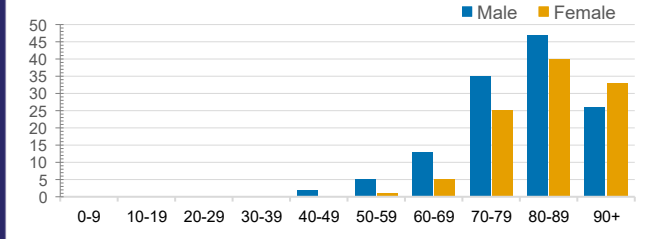
**CASES BY SOURCE OF INFECTION**



**CASES BY AGE GROUP AND SEX**



**DEATHS BY AGE GROUP AND SEX**



**PUBLIC HEALTH RESPONSE MEASURE**

