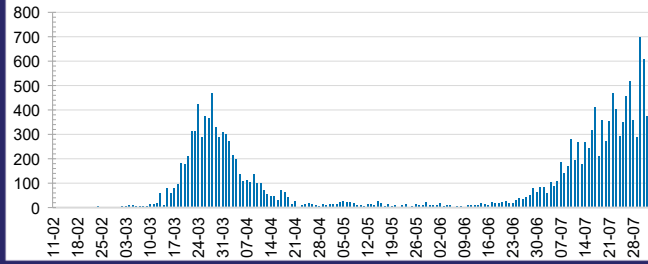




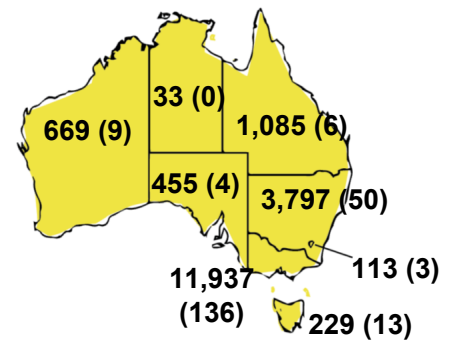
CURRENT STATUS OF CONFIRMED CASES



DAILY NUMBER OF REPORTED CASES



CASES (DEATHS) BY STATE AND TERRITORIES



43



ACT	NSW	NT	QLD	SA	TAS	VIC	WA
0	8	0	0	0	0	35	0

439



ACT	NSW	NT	QLD	SA	TAS	VIC	WA
0	13	3	7	0	0	416	0

4,386,911



0.4% POSITIVE

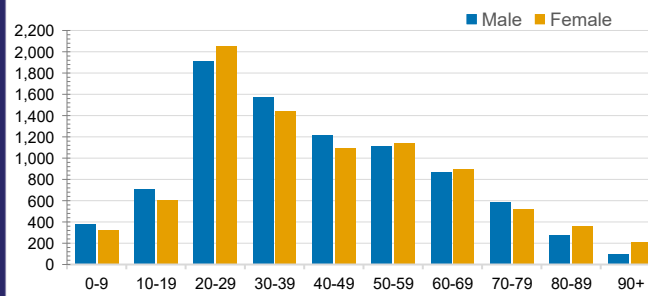
ACT	NSW	NT	QLD
53,182	1,526,863	25,351	569,392
POSITIVE	POSITIVE	POSITIVE	POSITIVE
0.2%	0.2%	0.1%	0.2%
SA	TAS	VIC	WA
250,229	70,359	1,633,953	257,582
POSITIVE	POSITIVE	POSITIVE	POSITIVE
0.2%	0.3%	0.7%	0.3%

CASES IN AGED CARE SERVICES

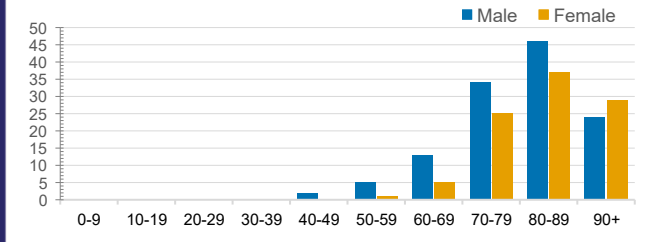
Confirmed Cases	Australia	ACT	NSW	NT	QLD	SA	TAS	VIC	WA
Residential Care Recipients	839 [45] (137)	0	61 [32] (29)	0	1 (1)	0	1 (1)	776 [13] (106)	0
In Home Care Recipients	54 [32] (5)	0	13 [13] (0)	0	8 [8] (0)	1 [1] (0)	5 [3] (2)	26 [7] (2)	1 (1)

Cases in care recipients [recovered] (deaths)

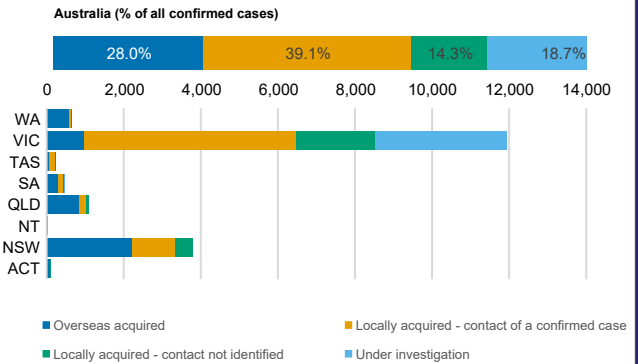
CASES BY AGE GROUP AND SEX



DEATHS BY AGE GROUP AND SEX



CASES BY SOURCE OF INFECTION



PUBLIC HEALTH RESPONSE MEASURE

