



CURRENT STATUS OF CONFIRMED CASES

25,547

Total cases

600

Total deaths

20,851

Cases recovered

32

CURRENT CASES
INTENSIVE CARE UNITS (ICU)

ACT	NSW	NT	QLD	SA	TAS	VIC	WA
0	6	0	0	0	0	26	0

510

CURRENT CASES
ADMITTED TO HOSPITALS

ACT	NSW	NT	QLD	SA	TAS	VIC	WA
0	10	0	18	0	1	481	0

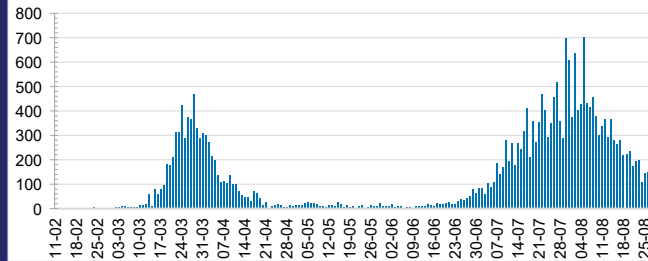
6,119,791

0.4% POSITIVE

TOTAL TESTS
CONDUCTED

ACT	NSW	NT	QLD
74,784	2,137,629	35,119	878,366
POSITIVE	POSITIVE	POSITIVE	POSITIVE
0.2%	0.2%	0.1%	0.1%
SA	TAS	VIC	WA
373,451	86,913	2,196,126	337,403
POSITIVE	POSITIVE	POSITIVE	POSITIVE
0.1%	0.3%	0.9%	0.2%

DAILY NUMBER OF REPORTED CASES

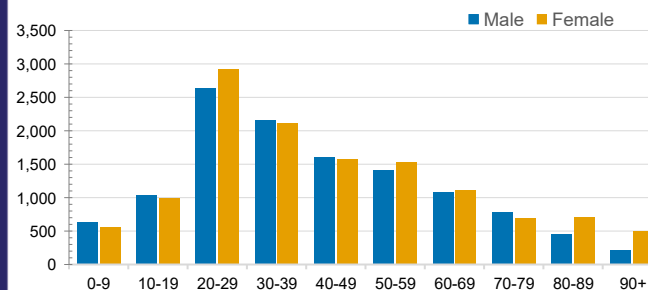


CASES IN AGED CARE SERVICES

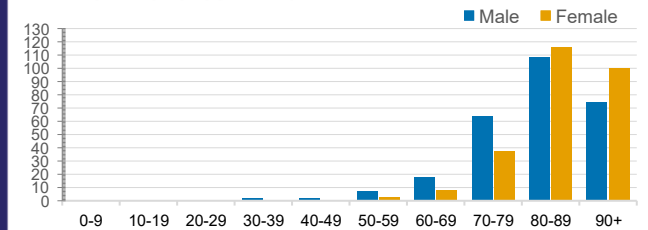
Confirmed Cases	Australia	ACT	NSW	NT	QLD	SA	TAS	VIC	WA
Residential Care Recipients	1859 [464]	0	61 [32]	0	1 (1)	0	1 (1)	1796 [432]	0
In Home Care Recipients	79 [53]	0	13 [13]	0	8 [8]	1 [1]	5 [3]	51 [28]	1 (1)

Cases in care recipients [recovered] (deaths)

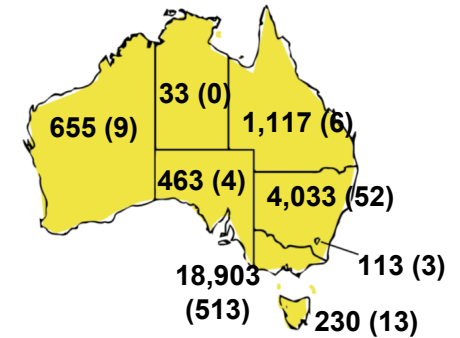
CASES BY AGE GROUP AND SEX



DEATHS BY AGE GROUP AND SEX

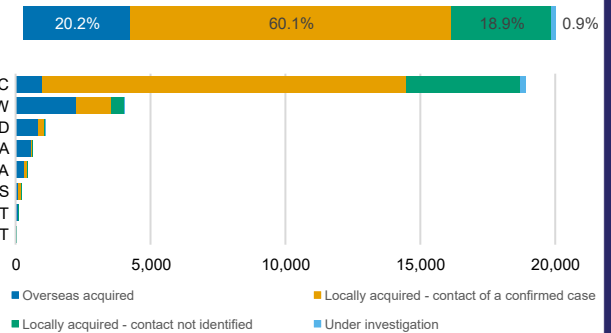


CASES (DEATHS) BY STATE AND TERRITORIES



CASES BY SOURCE OF INFECTION

Australia (% of all confirmed cases)



PUBLIC HEALTH RESPONSE MEASURE

Proportion of total cases under investigation

