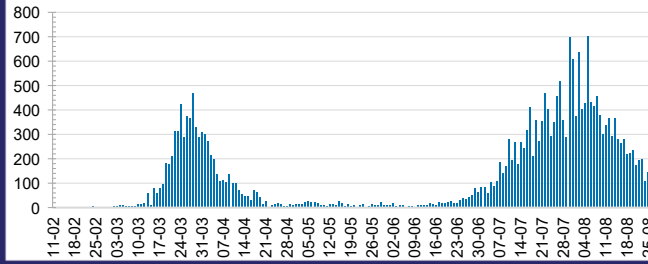




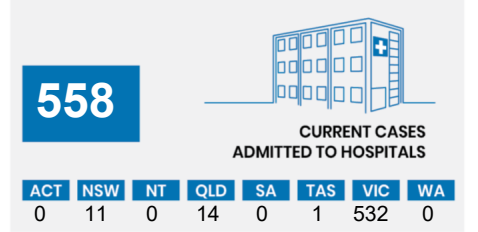
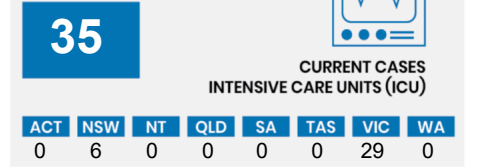
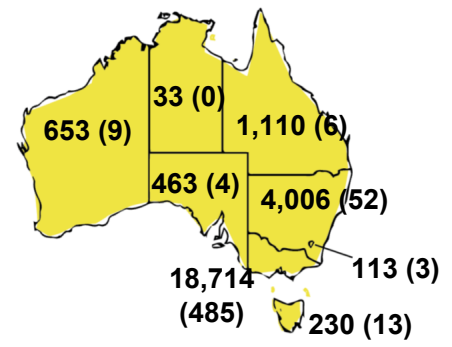
**CURRENT STATUS OF CONFIRMED CASES**



**DAILY NUMBER OF REPORTED CASES**



**CASES (DEATHS) BY STATE AND TERRITORIES**

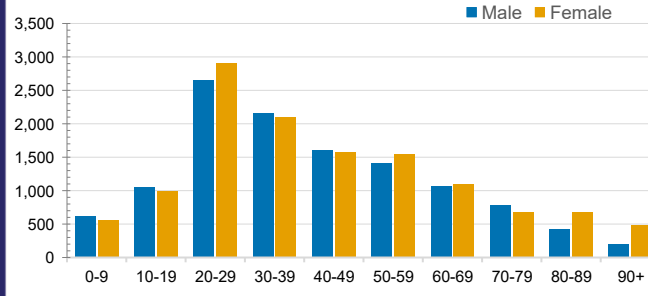


**CASES IN AGED CARE SERVICES**

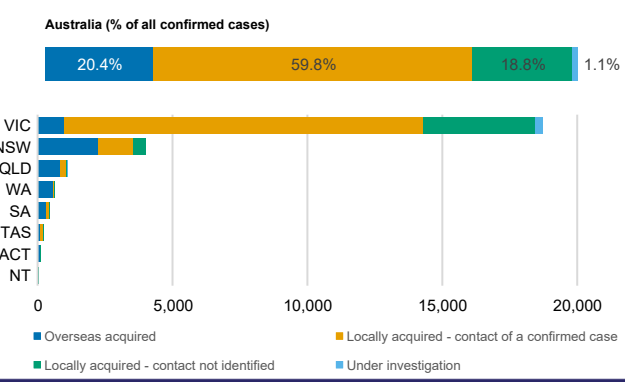
Confirmed Cases	Australia	ACT	NSW	NT	QLD	SA	TAS	VIC	WA
Residential Care Recipients	1827 [395]	0	61 [32] (29)	0	1 (1)	0	1 (1)	1764 [363] (342)	0
In Home Care Recipients	79 [53] (7)	0	13 [13]	0	8 [8]	1 [1]	5 [3] (2)	51 [28] (4)	1 (1)

Cases in care recipients [recovered] (deaths)

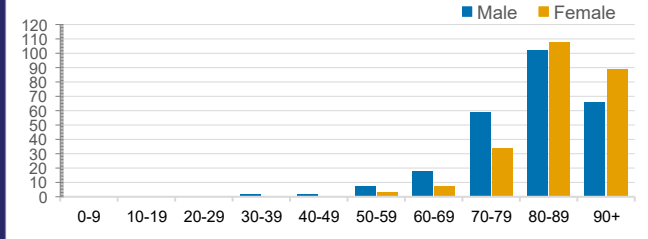
**CASES BY AGE GROUP AND SEX**



**CASES BY SOURCE OF INFECTION**



**DEATHS BY AGE GROUP AND SEX**



**PUBLIC HEALTH RESPONSE MEASURE**

