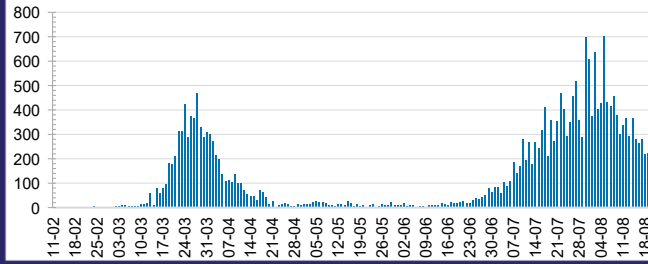




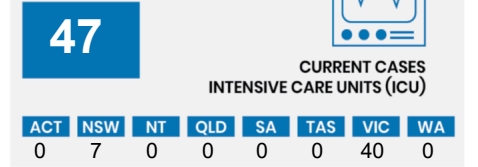
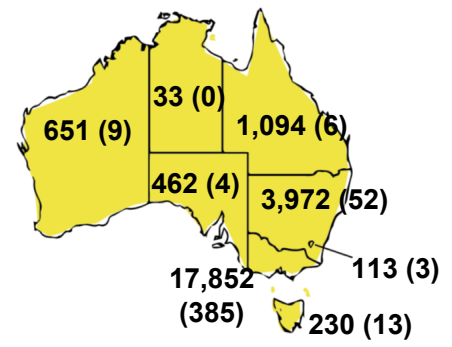
**CURRENT STATUS OF CONFIRMED CASES**



**DAILY NUMBER OF REPORTED CASES**



**CASES (DEATHS) BY STATE AND TERRITORIES**

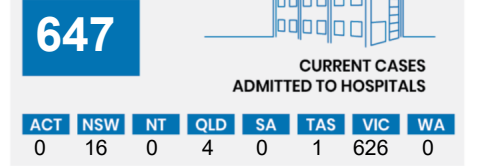
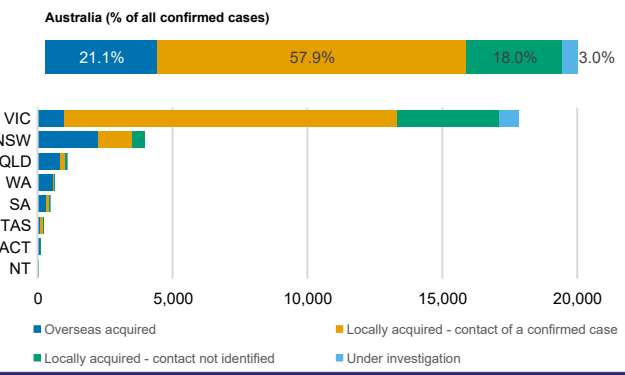


**CASES IN AGED CARE SERVICES**

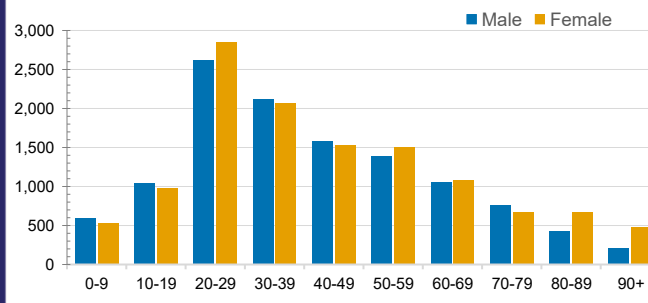
Confirmed Cases	Australia	ACT	NSW	NT	QLD	SA	TAS	VIC	WA
Residential Care Recipients	1698 [68]	0	61 [32]	0	1 (1)	0	1 (1)	1635 [36]	0
In Home Care Recipients	74 [46]	0	13 [13]	0	8 [8]	1 [1]	5 [3]	46 [21]	1 (1)

Cases in care recipients [recovered] (deaths)

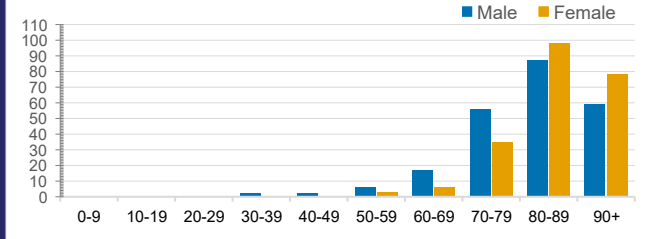
**CASES BY SOURCE OF INFECTION**



**CASES BY AGE GROUP AND SEX**



**DEATHS BY AGE GROUP AND SEX**



**PUBLIC HEALTH RESPONSE MEASURE**

