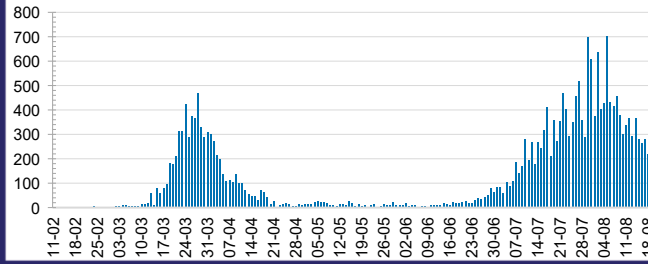




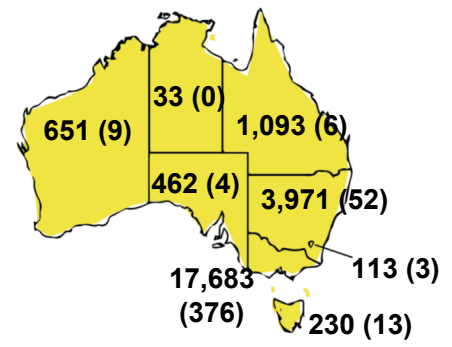
CURRENT STATUS OF CONFIRMED CASES



DAILY NUMBER OF REPORTED CASES



CASES (DEATHS) BY STATE AND TERRITORIES



51



ACT	NSW	NT	QLD	SA	TAS	VIC	WA
0	8	0	0	0	0	43	0

642



ACT	NSW	NT	QLD	SA	TAS	VIC	WA
0	16	0	3	0	1	622	0

5,508,831



0.4% POSITIVE

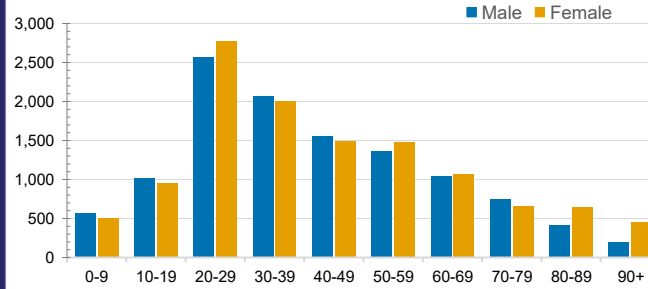
ACT	NSW	NT	QLD
68,274	1,905,703	31,866	756,977
POSITIVE	POSITIVE	POSITIVE	POSITIVE
0.2%	0.2%	0.1%	0.1%
SA	TAS	VIC	WA
337,004	81,061	2,028,909	299,037
POSITIVE	POSITIVE	POSITIVE	POSITIVE
0.1%	0.3%	0.9%	0.2%

CASES IN AGED CARE SERVICES

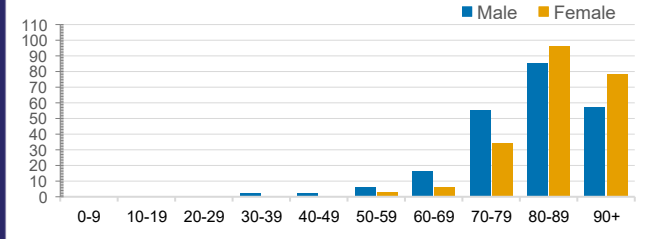
Confirmed Cases	Australia	ACT	NSW	NT	QLD	SA	TAS	VIC	WA
Residential Care Recipients	1656 [49]	0	61 [32]	0	1 (1)	0	1 (1)	1593 [17]	0
In Home Care Recipients	74 [42]	0	13 [13]	0	8 [8]	1 [1]	5 [3]	46 [17]	1 (1)

Cases in care recipients [recovered] (deaths)

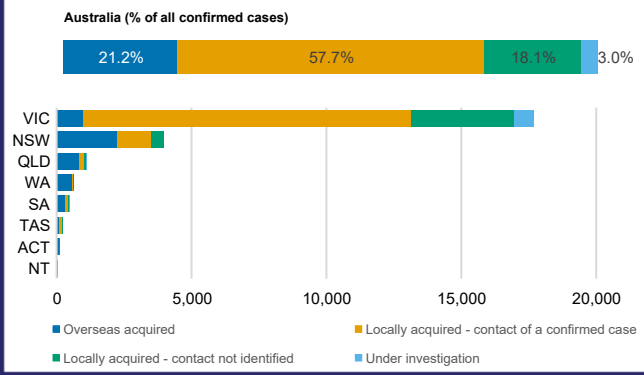
CASES BY AGE GROUP AND SEX



DEATHS BY AGE GROUP AND SEX



CASES BY SOURCE OF INFECTION



PUBLIC HEALTH RESPONSE MEASURE

