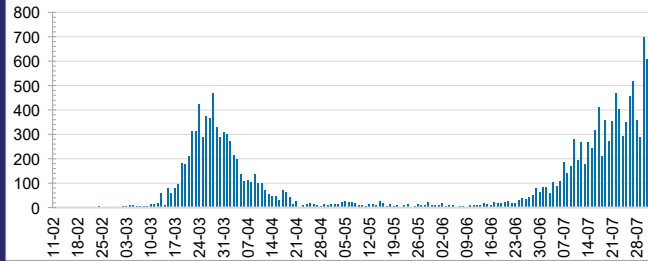




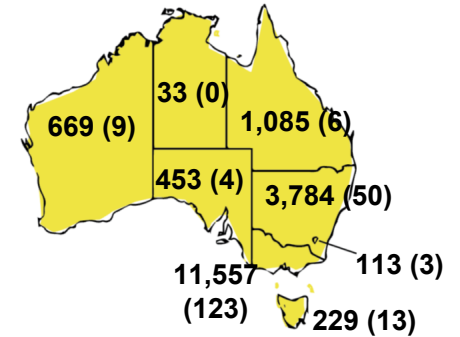
**CURRENT STATUS OF CONFIRMED CASES**



**DAILY NUMBER OF REPORTED CASES**



**CASES (DEATHS) BY STATE AND TERRITORIES**



**46**



| ACT | NSW | NT | QLD | SA | TAS | VIC | WA |
|-----|-----|----|-----|----|-----|-----|----|
| 0   | 8   | 0  | 0   | 0  | 0   | 38  | 0  |

**408**



| ACT | NSW | NT | QLD | SA | TAS | VIC | WA |
|-----|-----|----|-----|----|-----|-----|----|
| 0   | 13  | 3  | 7   | 0  | 0   | 385 | 0  |

**4,346,382**



**0.4% POSITIVE**

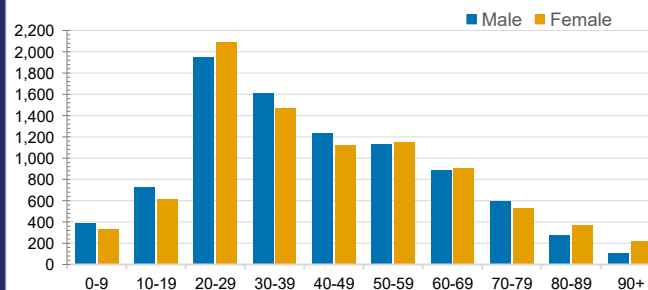
| ACT      | NSW       | NT        | QLD      |
|----------|-----------|-----------|----------|
| 52,639   | 1,508,040 | 25,211    | 560,607  |
| POSITIVE | POSITIVE  | POSITIVE  | POSITIVE |
| 0.2%     | 0.3%      | 0.1%      | 0.2%     |
| SA       | TAS       | VIC       | WA       |
| 246,160  | 69,983    | 1,633,953 | 249,789  |
| POSITIVE | POSITIVE  | POSITIVE  | POSITIVE |
| 0.2%     | 0.3%      | 0.7%      | 0.3%     |

**CASES IN AGED CARE SERVICES**

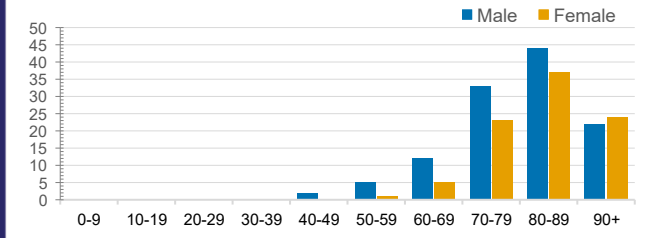
| Confirmed Cases             | Australia      | ACT | NSW          | NT | QLD       | SA        | TAS       | VIC            | WA    |
|-----------------------------|----------------|-----|--------------|----|-----------|-----------|-----------|----------------|-------|
| Residential Care Recipients | 800 [45] (136) | 0   | 61 [32] (29) | 0  | 1 (1)     | 0         | 1 (1)     | 737 [13] (105) | 0     |
| In Home Care Recipients     | 54 [32] (5)    | 0   | 13 [13] (0)  | 0  | 8 [8] (0) | 1 [1] (0) | 5 [3] (2) | 26 [7] (2)     | 1 (1) |

Cases in care recipients [recovered] (deaths)

**CASES BY AGE GROUP AND SEX**

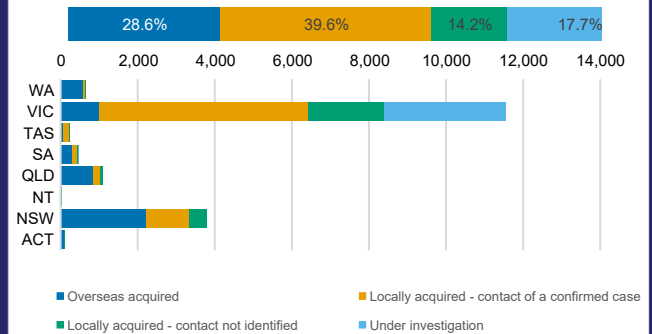


**DEATHS BY AGE GROUP AND SEX**



**CASES BY SOURCE OF INFECTION**

Australia (% of all confirmed cases)



**PUBLIC HEALTH RESPONSE MEASURE**

Proportion of total cases under investigation

