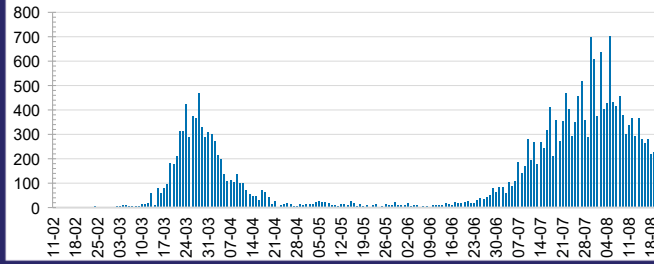




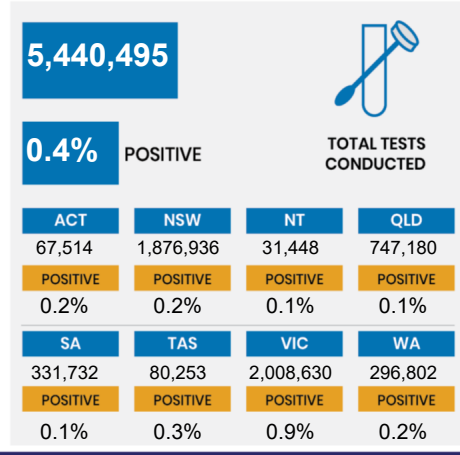
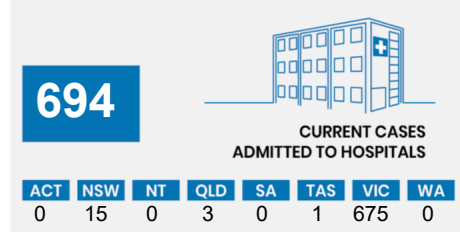
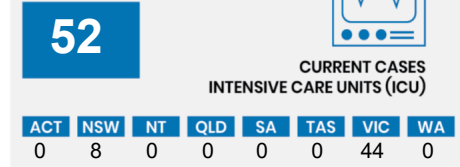
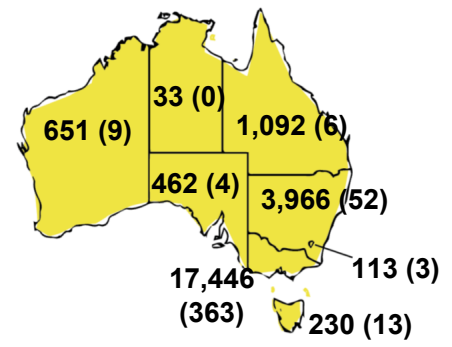
CURRENT STATUS OF CONFIRMED CASES



DAILY NUMBER OF REPORTED CASES



CASES (DEATHS) BY STATE AND TERRITORIES



CASES IN AGED CARE SERVICES

Confirmed Cases	Australia	ACT	NSW	NT	QLD	SA	TAS	VIC	WA
Residential Care Recipients	1597 [49] (276)	0	61 [32] (29)	0	1 (1)	0	1 (1)	1534 [17] (245)	0
In Home Care Recipients	74 [42] (7)	0	13 [13] (0)	0	8 [8] (0)	1 [1] (0)	5 [3] (2)	46 [17] (4)	1 (1)

Cases in care recipients [recovered] (deaths)

