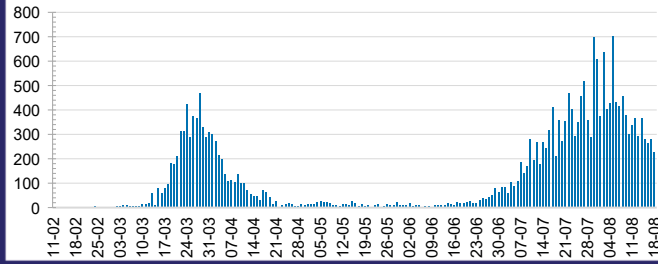




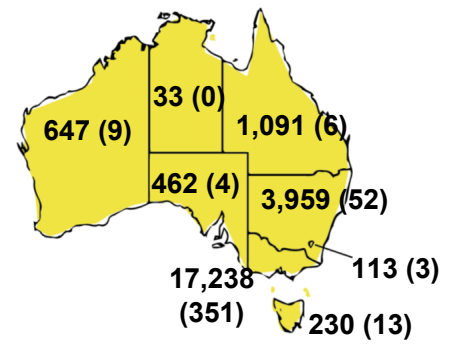
CURRENT STATUS OF CONFIRMED CASES



DAILY NUMBER OF REPORTED CASES



CASES (DEATHS) BY STATE AND TERRITORIES



52



ACT	NSW	NT	QLD	SA	TAS	VIC	WA
0	7	0	0	0	0	45	0

682



ACT	NSW	NT	QLD	SA	TAS	VIC	WA
0	13	0	3	0	1	665	0

5,380,613



0.4% POSITIVE

**TOTAL TESTS
CONDUCTED**

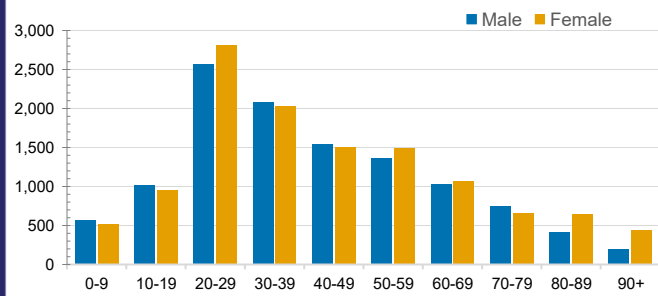
ACT	NSW	NT	QLD
65,008	1,857,522	31,052	735,640
POSITIVE	POSITIVE	POSITIVE	POSITIVE
0.2%	0.2%	0.1%	0.1%
SA	TAS	VIC	WA
326,109	79,469	1,992,521	293,292
POSITIVE	POSITIVE	POSITIVE	POSITIVE
0.1%	0.3%	0.9%	0.2%

CASES IN AGED CARE SERVICES

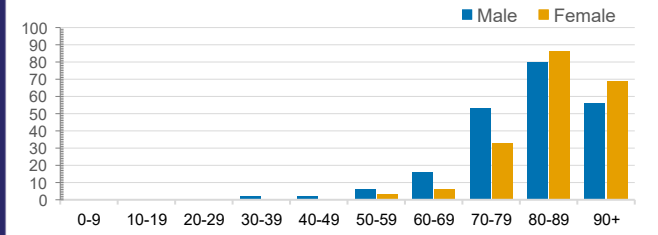
Confirmed Cases	Australia	ACT	NSW	NT	QLD	SA	TAS	VIC	WA
Residential Care Recipients	1549 [49]	0	61 [32]	0	1 (1)	0	1 (1)	1486 [17]	0
In Home Care Recipients	71 [36]	0	13 [13]	0	8 [8]	1 [1]	5 [3]	43 [11]	1 (1)

Cases in care recipients [recovered] (deaths)

CASES BY AGE GROUP AND SEX

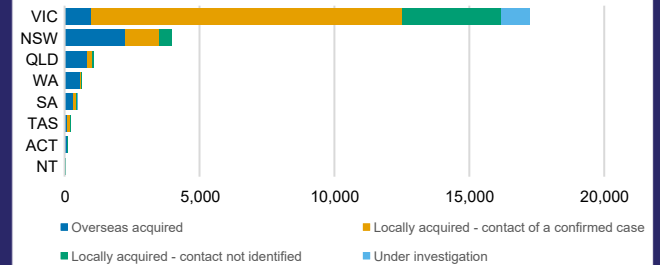
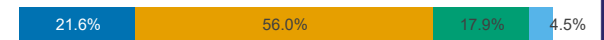


DEATHS BY AGE GROUP AND SEX



CASES BY SOURCE OF INFECTION

Australia (% of all confirmed cases)



PUBLIC HEALTH RESPONSE MEASURE

Proportion of total cases under investigation

