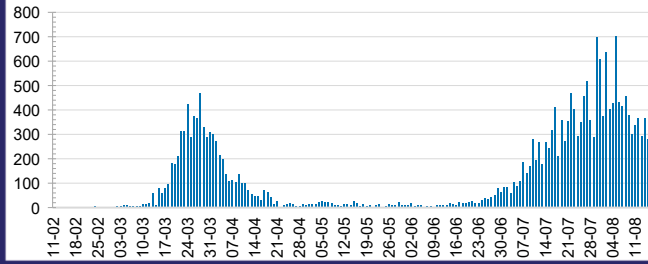




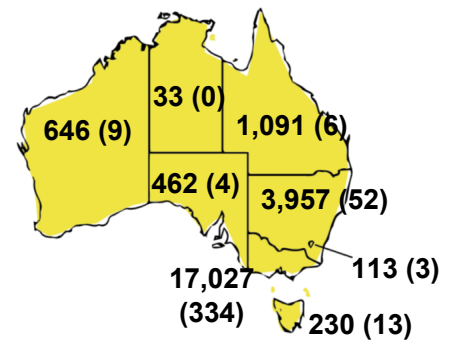
CURRENT STATUS OF CONFIRMED CASES



DAILY NUMBER OF REPORTED CASES



CASES (DEATHS) BY STATE AND TERRITORIES



51



ACT	NSW	NT	QLD	SA	TAS	VIC	WA
0	7	0	0	0	0	44	0

674



ACT	NSW	NT	QLD	SA	TAS	VIC	WA
0	13	0	3	0	1	657	0

5,336,097



0.4% POSITIVE

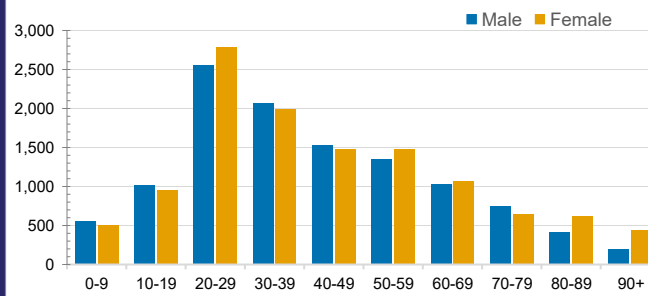
ACT	NSW	NT	QLD
65,008	1,843,786	30,724	727,913
POSITIVE	POSITIVE	POSITIVE	POSITIVE
0.2%	0.2%	0.1%	0.1%
SA	TAS	VIC	WA
323,111	79,127	1,975,030	291,398
POSITIVE	POSITIVE	POSITIVE	POSITIVE
0.1%	0.3%	0.9%	0.2%

CASES IN AGED CARE SERVICES

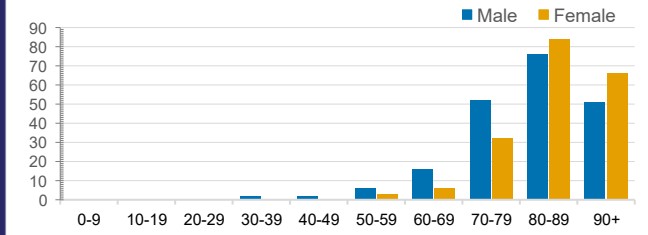
Confirmed Cases	Australia	ACT	NSW	NT	QLD	SA	TAS	VIC	WA
Residential Care Recipients	1492 [49] (228)	0	61 [32] (29)	0	1 (1)	0	1 (1)	1429 [17] (197)	0
In Home Care Recipients	70 [32] (7)	0	13 [13]	0	8 [8]	1 [1]	5 [3] (2)	42 [7] (4)	1 (1)

Cases in care recipients [recovered] (deaths)

CASES BY AGE GROUP AND SEX

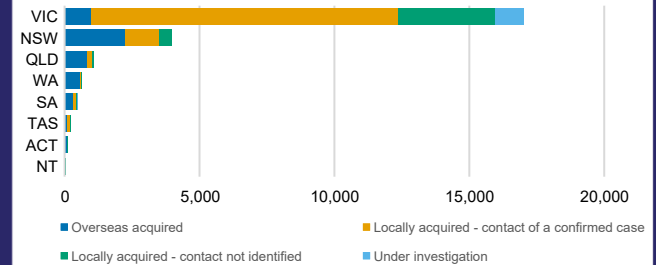
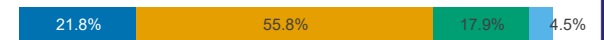


DEATHS BY AGE GROUP AND SEX



CASES BY SOURCE OF INFECTION

Australia (% of all confirmed cases)



PUBLIC HEALTH RESPONSE MEASURE

Proportion of total cases under investigation

