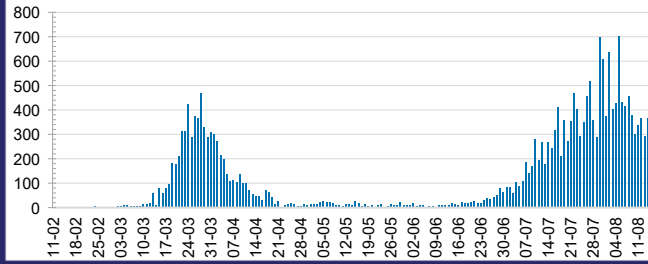




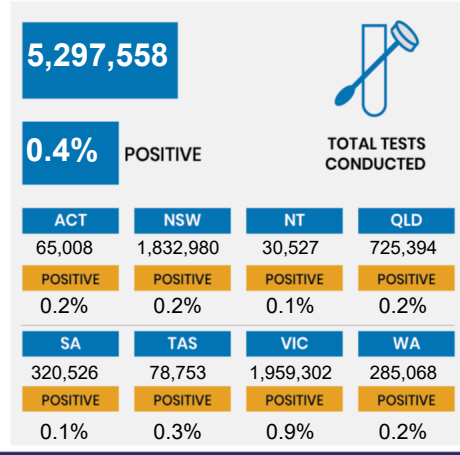
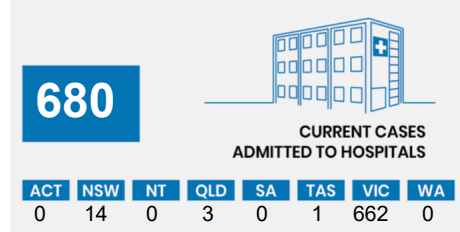
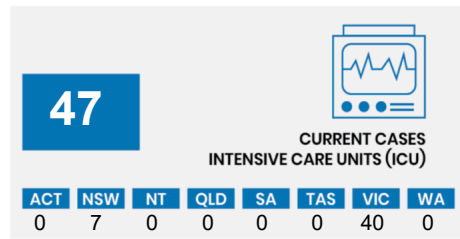
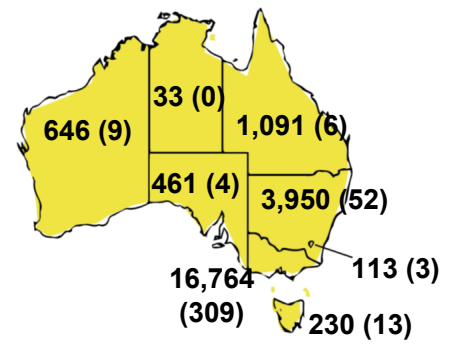
CURRENT STATUS OF CONFIRMED CASES



DAILY NUMBER OF REPORTED CASES



CASES (DEATHS) BY STATE AND TERRITORIES

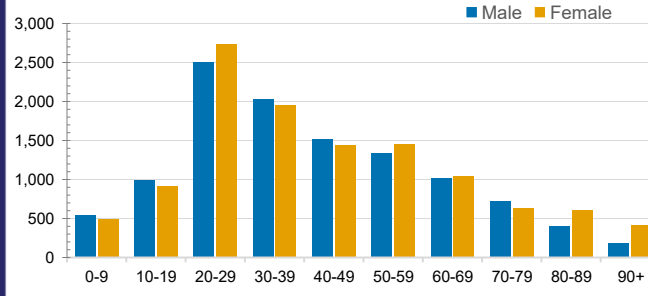


CASES IN AGED CARE SERVICES

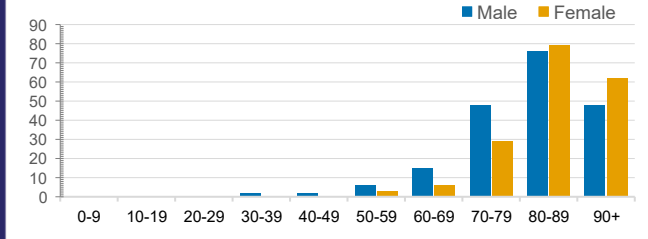
| Confirmed Cases | Australia | ACT | NSW | NT | QLD | SA | TAS | VIC | WA |
|-----------------------------|-----------------|-----|--------------|----|-------|-------|-----------|-----------------|-------|
| Residential Care Recipients | 1492 [49] (228) | 0 | 61 [32] (29) | 0 | 1 (1) | 0 | 1 (1) | 1429 [17] (197) | 0 |
| In Home Care Recipients | 70 [32] (7) | 0 | 13 [13] | 0 | 8 [8] | 1 [1] | 5 [3] (2) | 42 [7] (4) | 1 (1) |

Cases in care recipients [recovered] (deaths)

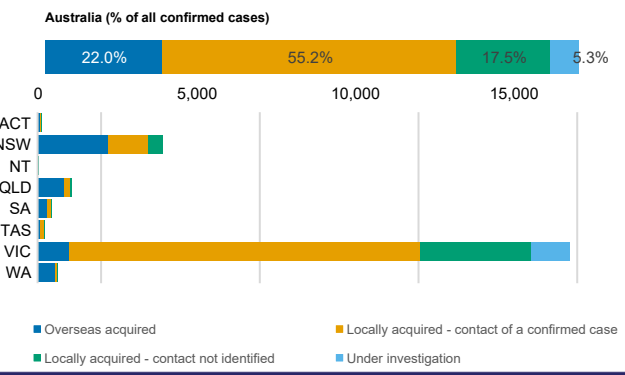
CASES BY AGE GROUP AND SEX



DEATHS BY AGE GROUP AND SEX



CASES BY SOURCE OF INFECTION



PUBLIC HEALTH RESPONSE MEASURE

