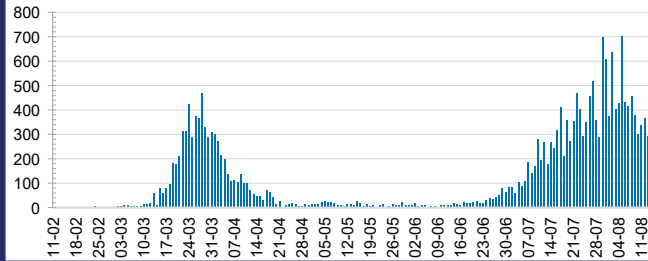




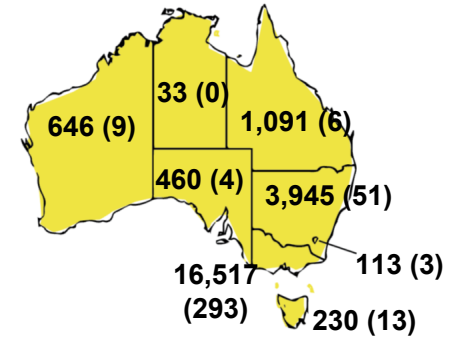
**CURRENT STATUS OF CONFIRMED CASES**



**DAILY NUMBER OF REPORTED CASES**



**CASES (DEATHS) BY STATE AND TERRITORIES**



**48**



ACT	NSW	NT	QLD	SA	TAS	VIC	WA
0	7	0	0	0	0	41	0

**681**



ACT	NSW	NT	QLD	SA	TAS	VIC	WA
0	16	0	3	0	1	661	0

**5,243,784**



**TOTAL TESTS  
CONDUCTED**

**0.4% POSITIVE**

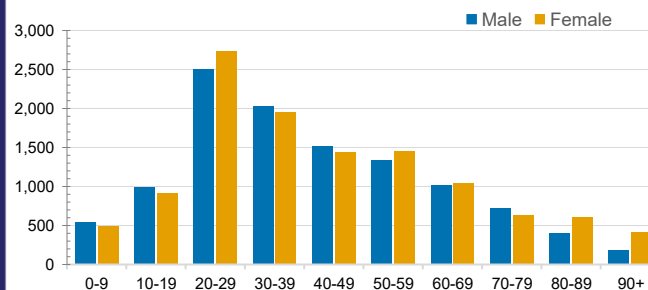
ACT	NSW	NT	QLD
64,828	1,808,887	30,369	722,095
POSITIVE	POSITIVE	POSITIVE	POSITIVE
0.2%	0.2%	0.1%	0.2%
SA	TAS	VIC	WA
316,425	78,376	1,937,736	285,068
POSITIVE	POSITIVE	POSITIVE	POSITIVE
0.1%	0.3%	0.9%	0.2%

**CASES IN AGED CARE SERVICES**

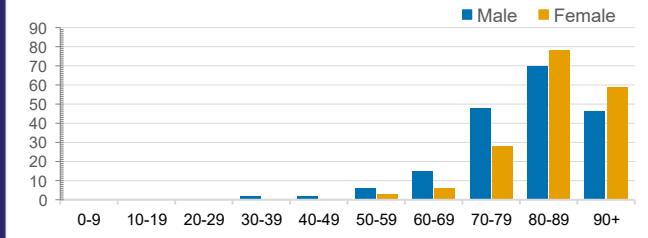
Confirmed Cases	Australia	ACT	NSW	NT	QLD	SA	TAS	VIC	WA
Residential Care Recipients	1430 [49]	0	61 [32]	0	1 (1)	0	1 (1)	1367 [17]	0
In Home Care Recipients	69 [32]	0	13 [13]	0	8 [8]	1 [1]	5 [3]	41 [7]	1 (1)

Cases in care recipients [recovered] (deaths)

**CASES BY AGE GROUP AND SEX**

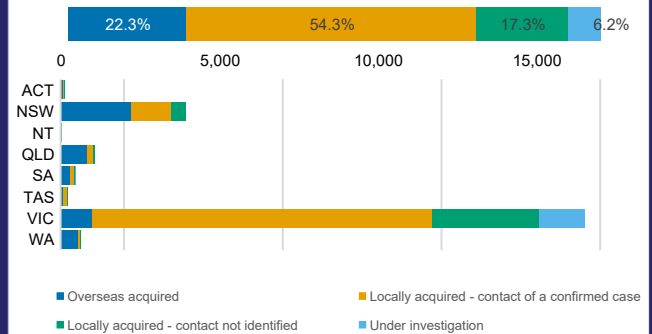


**DEATHS BY AGE GROUP AND SEX**



**CASES BY SOURCE OF INFECTION**

Australia (% of all confirmed cases)



**PUBLIC HEALTH RESPONSE MEASURE**

Proportion of total cases under investigation

