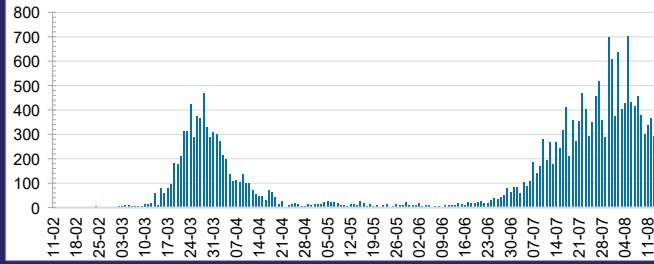




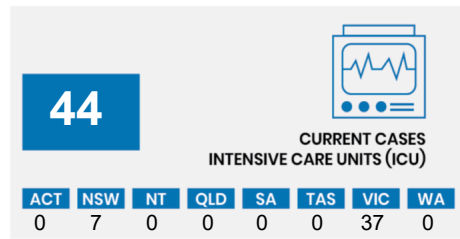
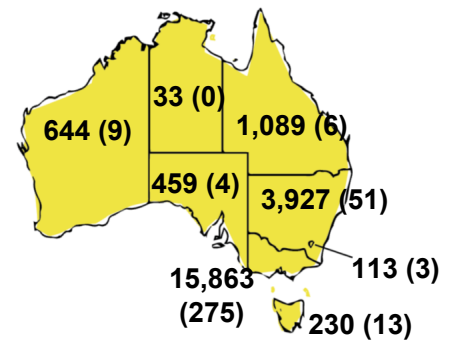
CURRENT STATUS OF CONFIRMED CASES



DAILY NUMBER OF REPORTED CASES



CASES (DEATHS) BY STATE AND TERRITORIES

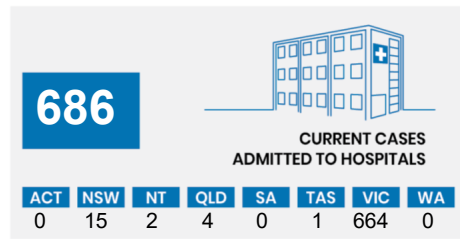
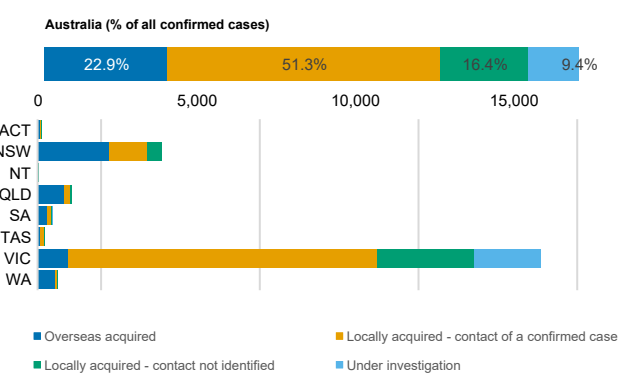


CASES IN AGED CARE SERVICES

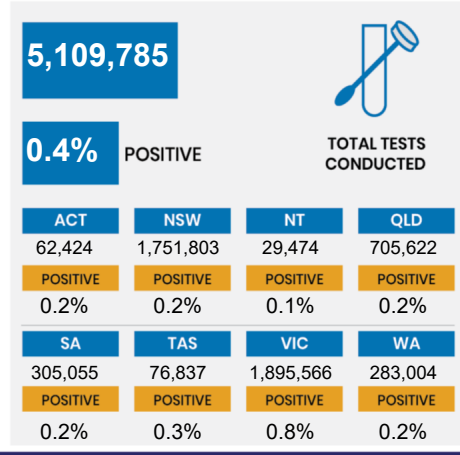
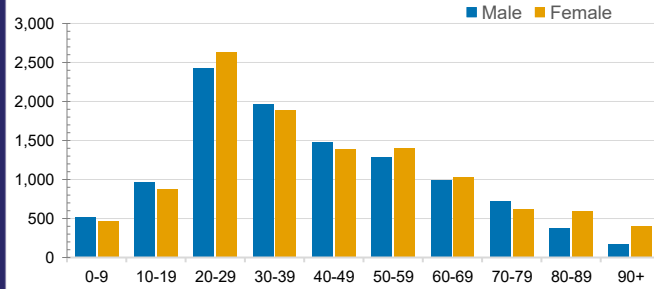
Confirmed Cases	Australia	ACT	NSW	NT	QLD	SA	TAS	VIC	WA
Residential Care Recipients	1374 [49]	0	61 [32]	0	1 (1)	0	1 (1)	1311 [17]	0
In Home Care Recipients	69 [32]	0	13 [13]	0	8 [8]	1 [1]	5 [3]	41 [7]	1 (1)

Cases in care recipients [recovered] (deaths)

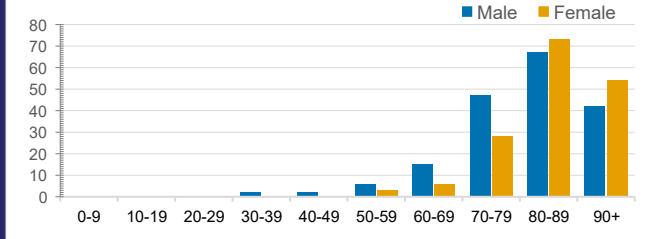
CASES BY SOURCE OF INFECTION



CASES BY AGE GROUP AND SEX



DEATHS BY AGE GROUP AND SEX



PUBLIC HEALTH RESPONSE MEASURE

