



### CURRENT STATUS OF CONFIRMED CASES

22,127

Total cases

352

Total deaths

12,774

Cases recovered

51

CURRENT CASES  
INTENSIVE CARE UNITS (ICU)

ACT	NSW	NT	QLD	SA	TAS	VIC	WA
0	8	0	0	0	0	43	0

685

CURRENT CASES  
ADMITTED TO HOSPITALS

ACT	NSW	NT	QLD	SA	TAS	VIC	WA
0	17	2	4	0	0	662	0

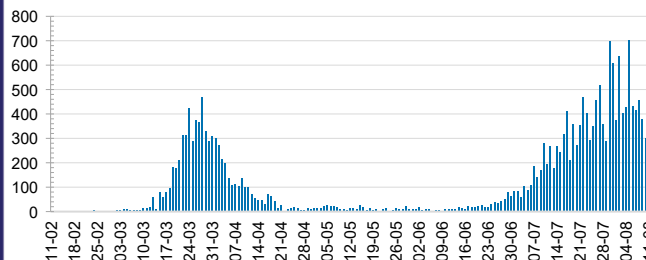
5,041,344

0.4% POSITIVE

TOTAL TESTS  
CONDUCTED

ACT	NSW	NT	QLD
61,255	1,727,182	29,045	693,707
POSITIVE	POSITIVE	POSITIVE	POSITIVE
0.2%	0.2%	0.1%	0.2%
SA	TAS	VIC	WA
299,549	75,875	1,874,615	280,116
POSITIVE	POSITIVE	POSITIVE	POSITIVE
0.2%	0.3%	0.8%	0.2%

### DAILY NUMBER OF REPORTED CASES

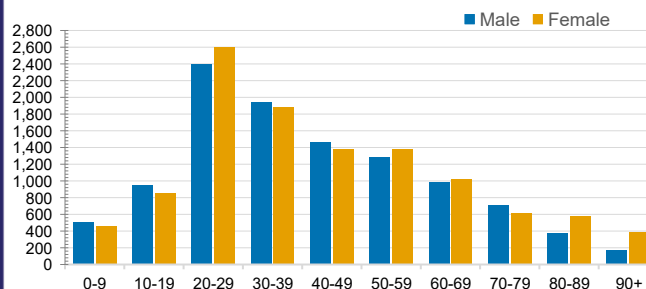


### CASES IN AGED CARE SERVICES

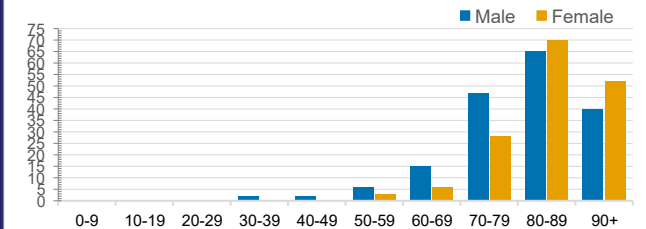
Confirmed Cases	Australia	ACT	NSW	NT	QLD	SA	TAS	VIC	WA
Residential Care Recipients	1310 [49]	0	61 [32]	0	1 (1)	0	1 (1)	1247 [17]	0
In Home Care Recipients	76 [32]	0	13 [13]	0	8 [8]	1 [1]	5 [3]	48 [7]	1 (1)

Cases in care recipients [recovered] (deaths)

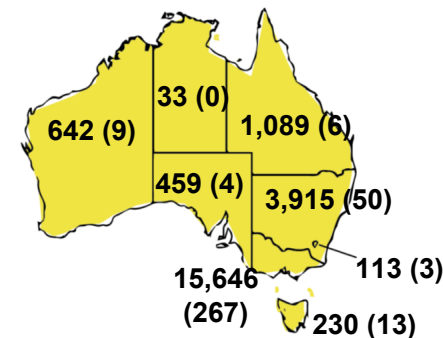
### CASES BY AGE GROUP AND SEX



### DEATHS BY AGE GROUP AND SEX

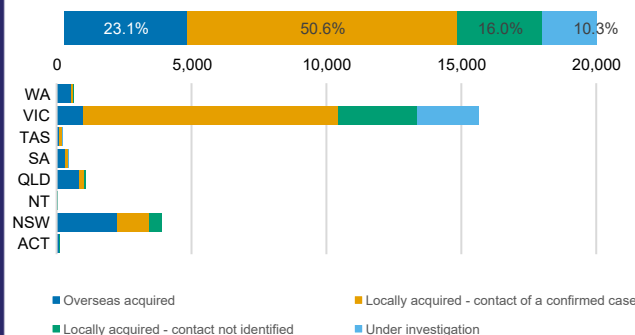


### CASES (DEATHS) BY STATE AND TERRITORIES



### CASES BY SOURCE OF INFECTION

Australia (% of all confirmed cases)



### PUBLIC HEALTH RESPONSE MEASURE

Proportion of total cases under investigation

