



**CURRENT STATUS OF CONFIRMED CASES**



**51**



ACT	NSW	NT	QLD	SA	TAS	VIC	WA
0	8	0	0	0	0	43	0

**673**



ACT	NSW	NT	QLD	SA	TAS	VIC	WA
0	17	2	4	0	0	650	0

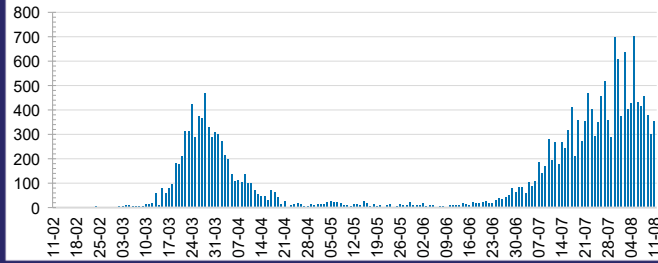
**4,980,172**



**0.4% POSITIVE**

ACT	NSW	NT	QLD
60,508	1,707,078	28,496	683,824
POSITIVE	POSITIVE	POSITIVE	POSITIVE
0.2%	0.2%	0.1%	0.2%
SA	TAS	VIC	WA
294,036	74,963	1,854,688	276,579
POSITIVE	POSITIVE	POSITIVE	POSITIVE
0.2%	0.3%	0.8%	0.2%

**DAILY NUMBER OF REPORTED CASES**

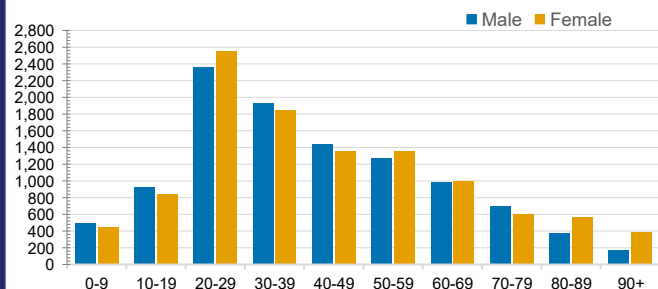


**CASES IN AGED CARE SERVICES**

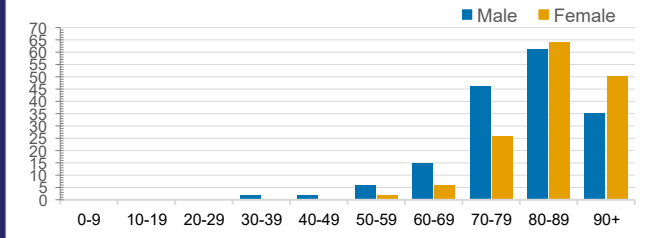
Confirmed Cases	Australia	ACT	NSW	NT	QLD	SA	TAS	VIC	WA
Residential Care Recipients	1292 [49]	0	61 [32] (29)	0	1 (1)	0	1 (1)	1229 [17] (189)	0
In Home Care Recipients	72 [32] (7)	0	13 [13]	0	8 [8]	1 [1]	5 [3] (2)	44 [7] (4)	1 (1)

Cases in care recipients [recovered] (deaths)

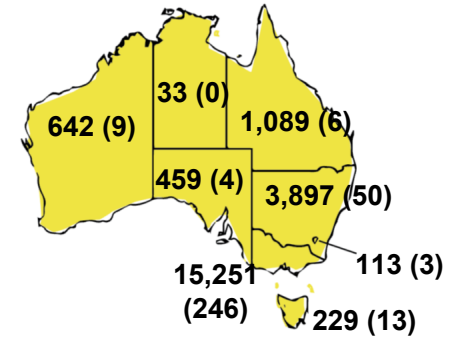
**CASES BY AGE GROUP AND SEX**



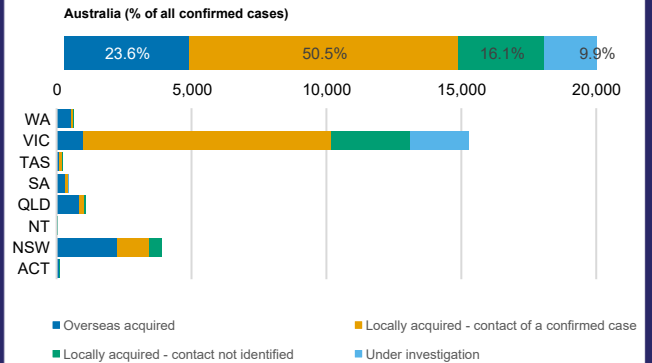
**DEATHS BY AGE GROUP AND SEX**



**CASES (DEATHS) BY STATE AND TERRITORIES**



**CASES BY SOURCE OF INFECTION**



**PUBLIC HEALTH RESPONSE MEASURE**

