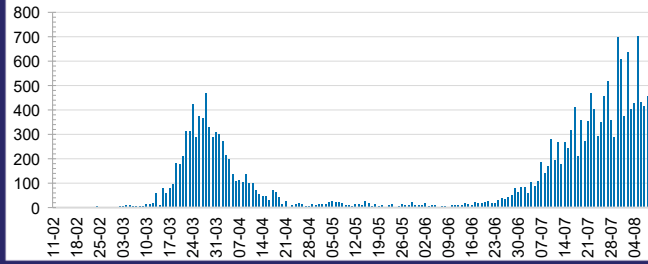




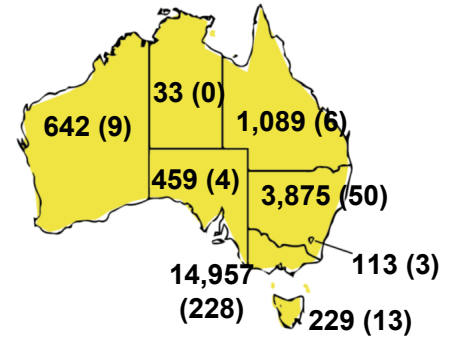
**CURRENT STATUS OF CONFIRMED CASES**



**DAILY NUMBER OF REPORTED CASES**



**CASES (DEATHS) BY STATE AND TERRITORIES**



**54**



ACT	NSW	NT	QLD	SA	TAS	VIC	WA
0	8	0	0	0	0	46	0

**664**



ACT	NSW	NT	QLD	SA	TAS	VIC	WA
0	17	3	4	0	0	640	0

**4,918,546**



**0.4% POSITIVE**

ACT	NSW	NT	QLD
59,852	1,693,821	28,123	677,300
POSITIVE	POSITIVE	POSITIVE	POSITIVE
0.2%	0.2%	0.1%	0.2%

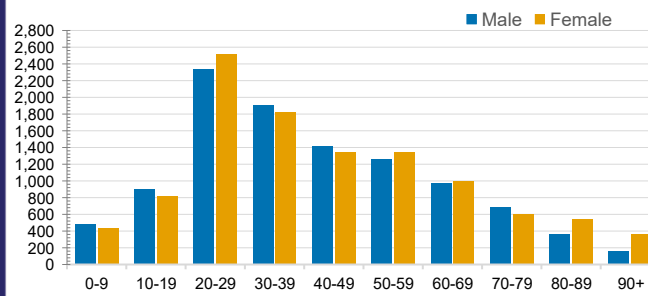
SA	TAS	VIC	WA
289,707	74,585	1,820,598	274,560
POSITIVE	POSITIVE	POSITIVE	POSITIVE
0.2%	0.3%	0.8%	0.2%

**CASES IN AGED CARE SERVICES**

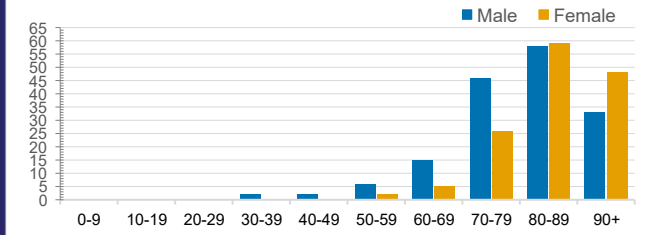
Confirmed Cases	Australia	ACT	NSW	NT	QLD	SA	TAS	VIC	WA
Residential Care Recipients	1292 [49]	0	61 [32]	0	1 (1)	0	1 (1)	1229 [17]	0
In Home Care Recipients	72 [32]	0	13 [13]	0	8 [8]	1 [1]	5 [3]	44 [7]	1 (1)

Cases in care recipients [recovered] (deaths)

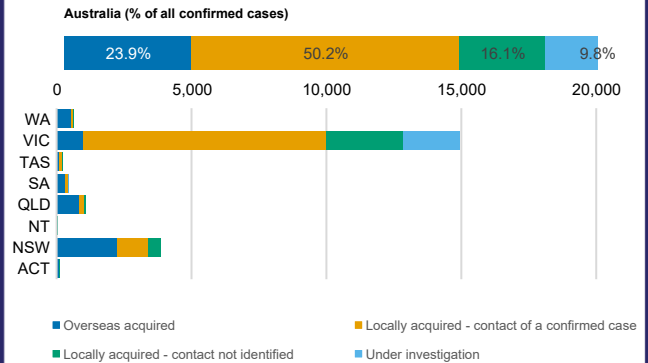
**CASES BY AGE GROUP AND SEX**



**DEATHS BY AGE GROUP AND SEX**



**CASES BY SOURCE OF INFECTION**



**PUBLIC HEALTH RESPONSE MEASURE**

