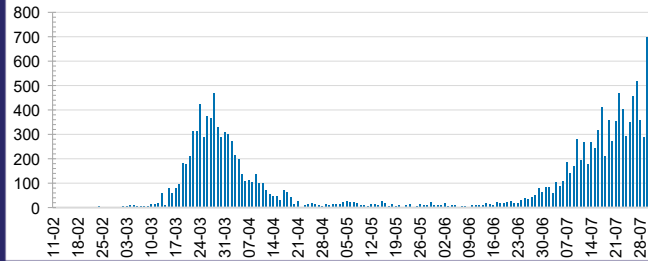




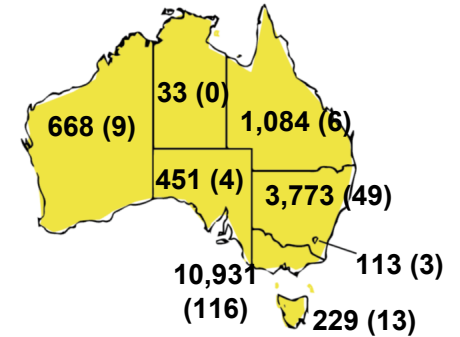
CURRENT STATUS OF CONFIRMED CASES



DAILY NUMBER OF REPORTED CASES



CASES (DEATHS) BY STATE AND TERRITORIES



50



ACT	NSW	NT	QLD	SA	TAS	VIC	WA
0	9	0	0	0	0	41	0

401



ACT	NSW	NT	QLD	SA	TAS	VIC	WA
0	13	3	6	0	0	379	0

4,307,224



0.4% POSITIVE

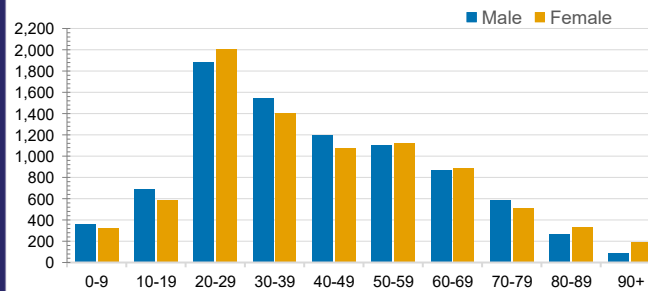
ACT	NSW	NT	QLD
51,714	1,485,613	24,915	549,547
POSITIVE	POSITIVE	POSITIVE	POSITIVE
0.2%	0.3%	0.1%	0.2%
SA	TAS	VIC	WA
242,141	69,552	1,633,953	249,789
POSITIVE	POSITIVE	POSITIVE	POSITIVE
0.2%	0.3%	0.7%	0.3%

CASES IN AGED CARE SERVICES

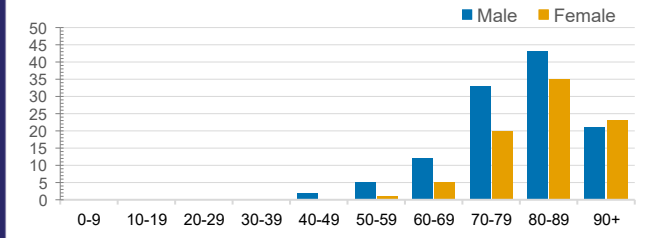
Confirmed Cases	Austra Ila	ACT	NSW	NT	QLD	SA	TAS	VIC	WA
Residential Care Recipients	736 [44]	0	61 [32]	0	1 (1)	0	1 (1)	673 [12]	0
In Home Care Recipients	54 [32]	0	13 [13]	0	8 [8]	1 [1]	5 [3]	26 [7]	1 (1)

Cases in care recipients [recovered] (deaths)

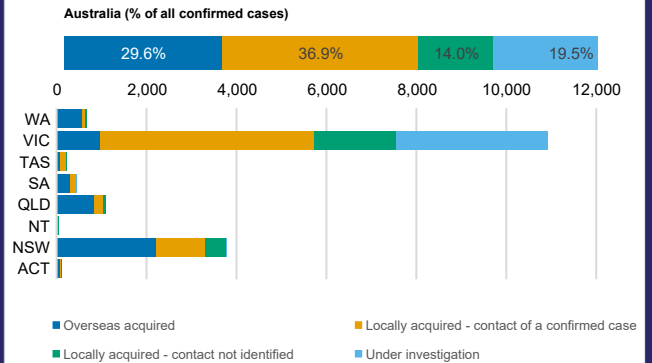
CASES BY AGE GROUP AND SEX



DEATHS BY AGE GROUP AND SEX



CASES BY SOURCE OF INFECTION



PUBLIC HEALTH RESPONSE MEASURE

