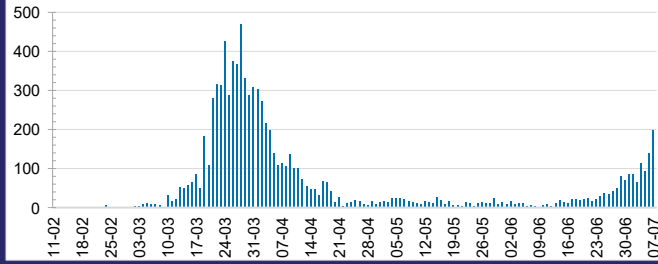




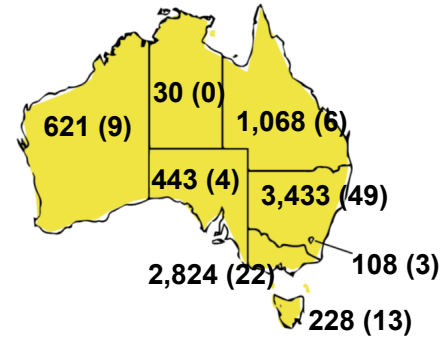
**CURRENT STATUS OF CONFIRMED CASES**



**DAILY NUMBER OF REPORTED CASES**



**CASES (DEATHS) BY STATE AND TERRITORIES**



**10**



ACT	NSW	NT	QLD	SA	TAS	VIC	WA
0	1	0	0	0	0	9	0

**39**



ACT	NSW	NT	QLD	SA	TAS	VIC	WA
0	2	1	1	0	0	35	0

**2,801,107**



**0.3% POSITIVE**

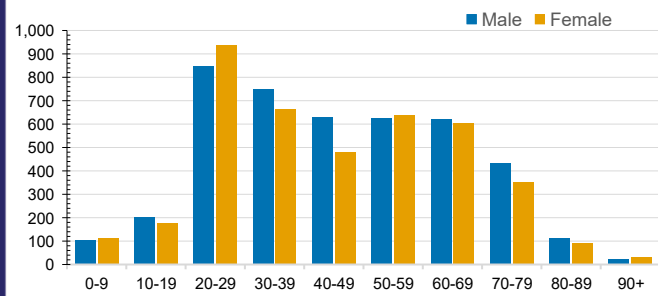
ACT	NSW	NT	QLD
32,562	963,733	15,112	395,027
POSITIVE	POSITIVE	POSITIVE	POSITIVE
0.3%	0.4%	0.2%	0.3%
SA	TAS	VIC	WA
163,444	54,092	979,253	197,884
POSITIVE	POSITIVE	POSITIVE	POSITIVE
0.3%	0.4%	0.3%	0.3%

**CASES IN AGED CARE SERVICES**

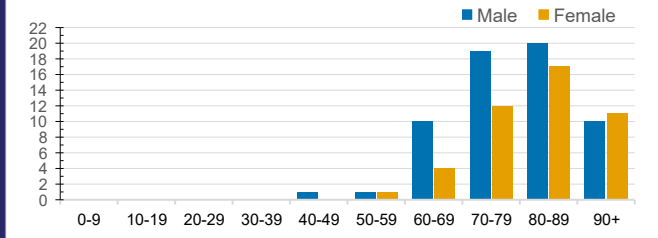
Confirmed Cases	Australia	ACT	NSW	NT	QLD	SA	TAS	VIC	WA
Residential Care Recipients	71 [40 (31)]	0	61 [32 (29)]	0	1 (1)	0	1 (1)	8 [8]	0
In Home Care Recipients	33 [28 (4)]	0	13 [13]	0	8 [8]	1 [1]	5 [3 (2)]	5 [3 (1)]	1 (1)

Cases in care recipients [recovered] (deaths)

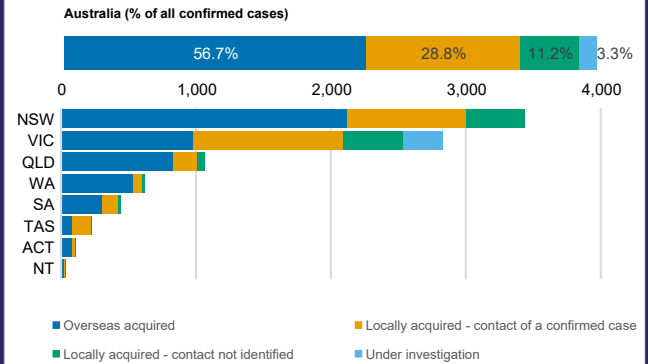
**CASES BY AGE GROUP AND SEX**



**DEATHS BY AGE GROUP AND SEX**



**CASES BY SOURCE OF INFECTION**



**PUBLIC HEALTH RESPONSE MEASURE**

