



CURRENT STATUS OF CONFIRMED CASES

16,303

Total cases

189

Total deaths

9,758

Cases recovered

40

CURRENT CASES
INTENSIVE CARE UNITS (ICU)

ACT	NSW	NT	QLD	SA	TAS	VIC	WA
0	6	0	0	0	0	34	0

330

CURRENT CASES
ADMITTED TO HOSPITALS

ACT	NSW	NT	QLD	SA	TAS	VIC	WA
0	11	1	5	0	1	312	0

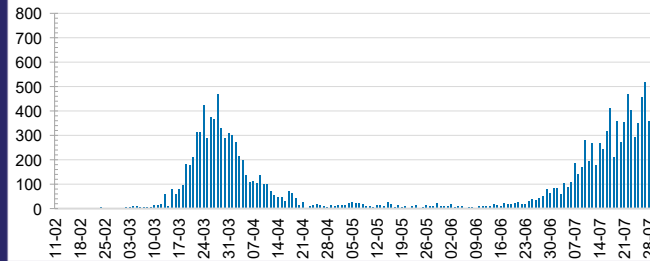
4,164,454

0.4% POSITIVE

TOTAL TESTS
CONDUCTED

ACT	NSW	NT	QLD
51,720	1,436,834	24,078	526,768
POSITIVE	POSITIVE	POSITIVE	POSITIVE
0.2%	0.3%	0.1%	0.2%
SA	TAS	VIC	WA
233,614	68,137	1,574,626	248,677
POSITIVE	POSITIVE	POSITIVE	POSITIVE
0.2%	0.3%	0.6%	0.3%

DAILY NUMBER OF REPORTED CASES

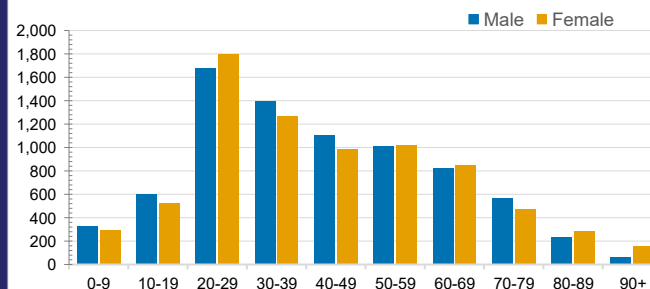


CASES IN AGED CARE SERVICES

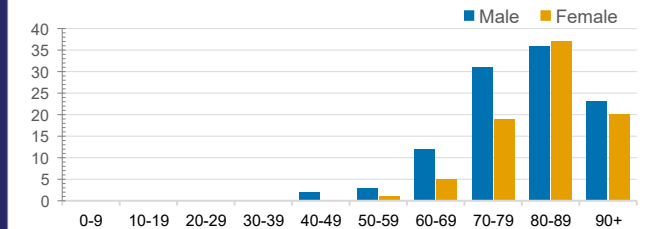
Confirmed Cases	Australia	ACT	NSW	NT	QLD	SA	TAS	VIC	WA
Residential Care Recipients	605 [44] (105)	0	61 [32] (29)	0	1 (1)	0	1 (1)	542 [12] (74)	0
In Home Care Recipients	53 [31] (5)	0	13 [13] (0)	0	8 [8] (0)	1 [1] (0)	5 [3] (2)	25 [6] (2)	1 (1)

Cases in care recipients [recovered] (deaths)

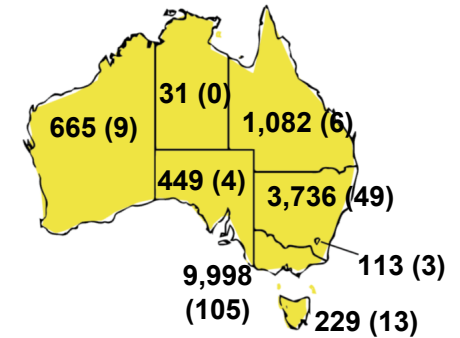
CASES BY AGE GROUP AND SEX



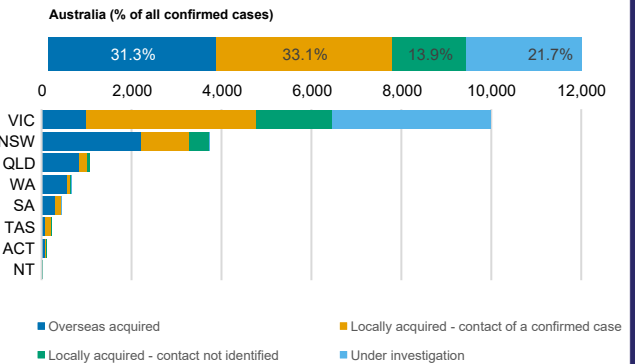
DEATHS BY AGE GROUP AND SEX



CASES (DEATHS) BY STATE AND TERRITORIES



CASES BY SOURCE OF INFECTION



PUBLIC HEALTH RESPONSE MEASURE

