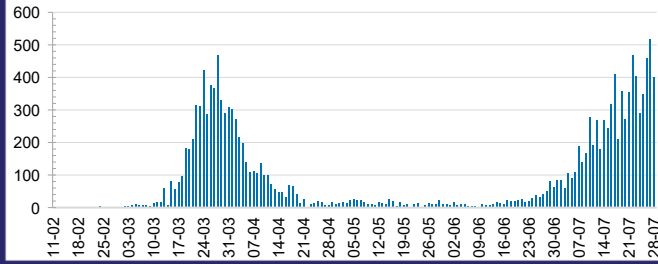




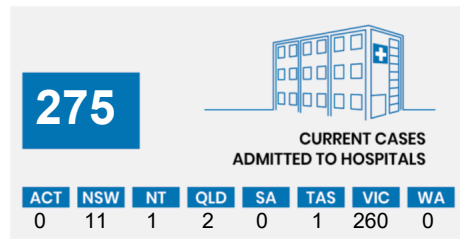
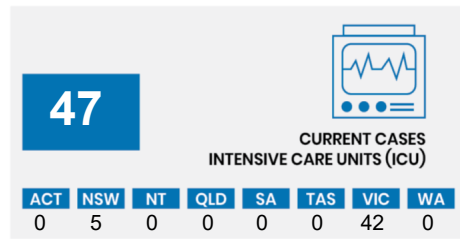
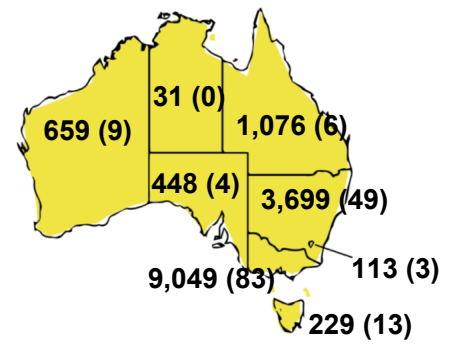
**CURRENT STATUS OF CONFIRMED CASES**



**DAILY NUMBER OF REPORTED CASES**



**CASES (DEATHS) BY STATE AND TERRITORIES**



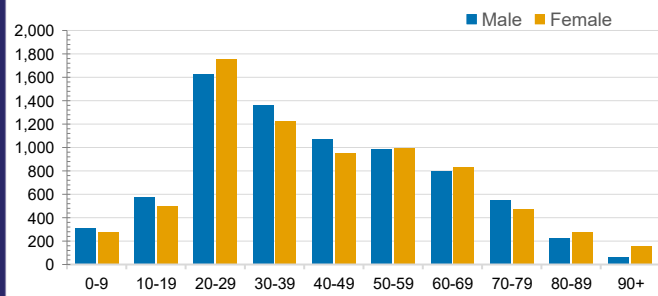
ACT	NSW	NT	QLD
48,686	1,391,144	23,084	510,206
POSITIVE	POSITIVE	POSITIVE	POSITIVE
0.2%	0.3%	0.1%	0.2%
SA	TAS	VIC	WA
212,490	66,544	1,536,628	243,279
POSITIVE	POSITIVE	POSITIVE	POSITIVE
0.2%	0.3%	0.6%	0.3%

**CASES IN AGED CARE SERVICES**

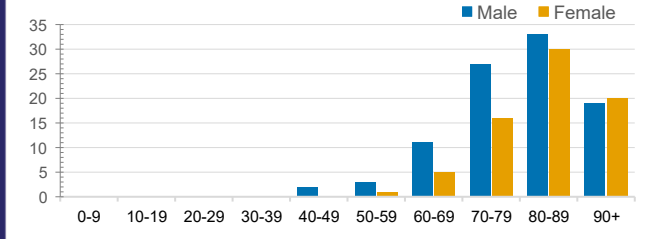
Confirmed Cases	Australia	ACT	NSW	NT	QLD	SA	TAS	VIC	WA
Residential Care Recipients	547 [41] (73)	0	61 [32] (29)	0	1 (1)	0	1 (1)	484 [9] (42)	0
In Home Care Recipients	50 [30] (5)	0	13 [13] (0)	0	8 [8] (0)	1 [1] (0)	5 [3] (2)	22 [5] (2)	1 (1)

Cases in care recipients [recovered] (deaths)

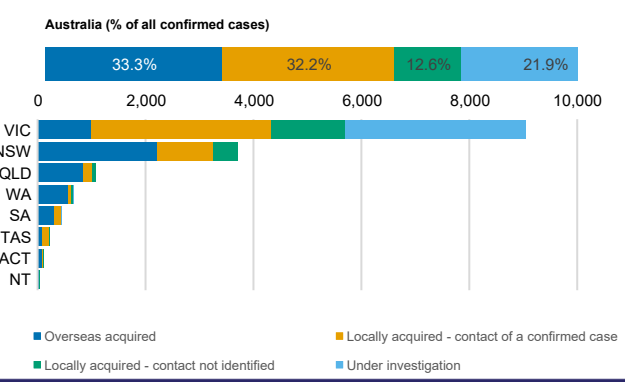
**CASES BY AGE GROUP AND SEX**



**DEATHS BY AGE GROUP AND SEX**



**CASES BY SOURCE OF INFECTION**



**PUBLIC HEALTH RESPONSE MEASURE**

