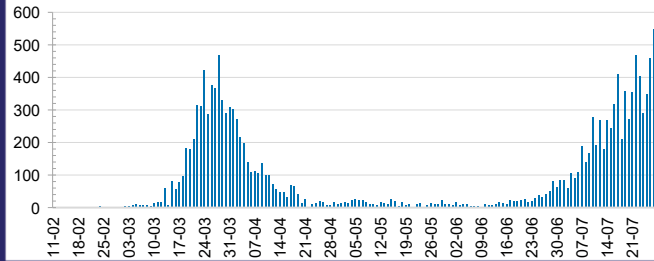




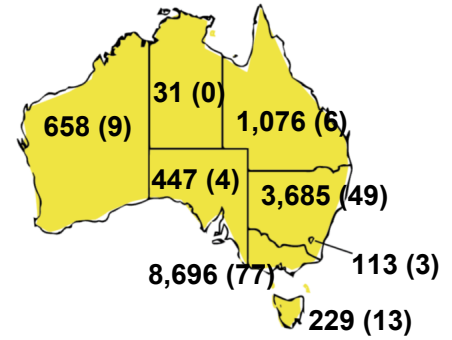
CURRENT STATUS OF CONFIRMED CASES



DAILY NUMBER OF REPORTED CASES



CASES (DEATHS) BY STATE AND TERRITORIES



49



ACT	NSW	NT	QLD	SA	TAS	VIC	WA
0	5	0	0	0	0	44	0

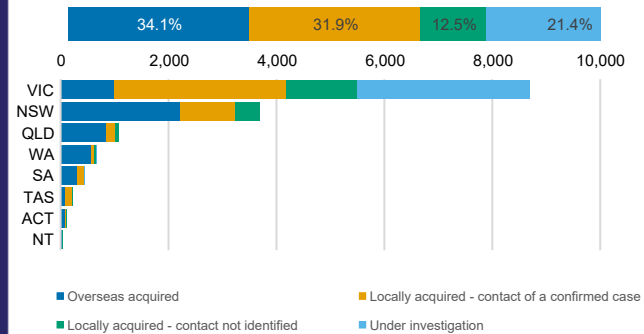
CASES IN AGED CARE SERVICES

Confirmed Cases	Australia	ACT	NSW	NT	QLD	SA	TAS	VIC	WA
Residential Care Recipients	495 [41]	0	61 [32] (29)	0	1 (1)	0	1 (1)	432 [9] (36)	0
In Home Care Recipients	49 [30]	0	13 [13]	0	8 [8]	1 [1]	5 [3] (2)	21 [5] (2)	1 (1)

Cases in care recipients [recovered] (deaths)

CASES BY SOURCE OF INFECTION

Australia (% of all confirmed cases)

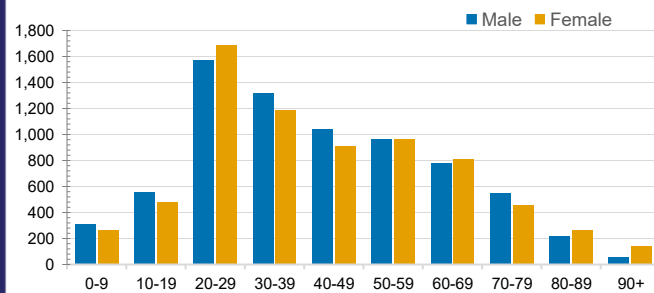


259



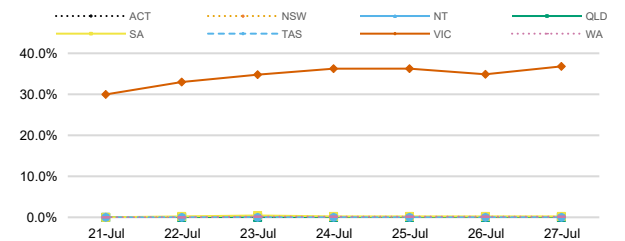
ACT	NSW	NT	QLD	SA	TAS	VIC	WA
0	10	1	2	0	1	245	0

CASES BY AGE GROUP AND SEX



PUBLIC HEALTH RESPONSE MEASURE

Proportion of total cases under investigation



3,987,090



TOTAL TESTS CONDUCTED

0.4% POSITIVE

ACT	NSW	NT	QLD
48,240	1,375,135	22,526	505,628
POSITIVE	POSITIVE	POSITIVE	POSITIVE
0.2%	0.3%	0.1%	0.2%
SA	TAS	VIC	WA
209,996	66,019	1,518,107	241,439
POSITIVE	POSITIVE	POSITIVE	POSITIVE
0.2%	0.3%	0.6%	0.3%

DEATHS BY AGE GROUP AND SEX

